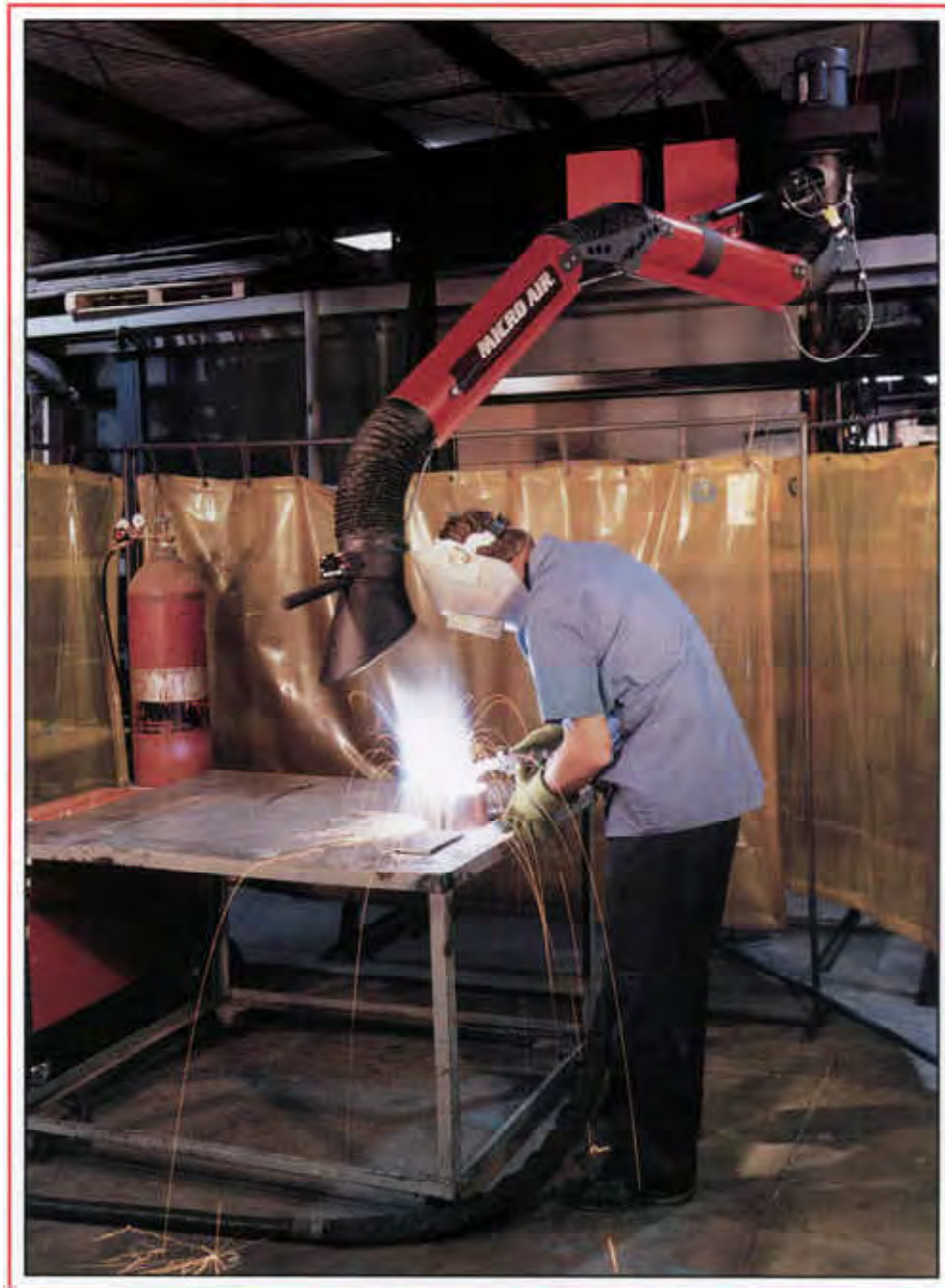

MICRO AIR AIR CLEANERS



SOURCE CAPTURE EXHAUSTER ARMS



FIRST AND ONLY MOTORIZED ARM ON THE MARKET

The SCA608, 610, and 614 “P” models feature a linear actuator that moves the arm up and down electronically. This allows for precise positioning of the arm, and easy operation, while still providing solid support.

EXTERNALLY SUPPORTED ARM DESIGN

The new Micro Air SCA arms are externally supported for easy adjustment. There is no need to slide a hose off the arm like some other models in order to make an adjustment. Simply turn the knobs to increase or decrease the tension. This “clean” design provides for less maintenance and better air flow pattern.



EASY OPERATION

All controls are mounted on the hood, and are pre-wired for easy installation. The light switch, motor/blower switch, and actuator switch are located together for easy operation.

HOOD

The SCA hood, in addition to having a light, swivels up to 360°, for precise positioning. Protective screen is standard.



VERSATILITY

Boom arm extends work range of SCA arms up to 14' additional length, for a total reach of 28'. And, it is designed to accept another SCA arm at the mounting point for dual arm applications.



THREE MODELS TO CHOOSE FROM

Micro Air offers you the most complete line of source capture arms on the market today. You can choose from the powered arm model, the ultimate in positioning and movement. Or, pick the "M" models which still allows up and down movement via a gas shock absorber mounted at the top. Finally, if you needs only require the bottom part of the arm to move, choose the "F" models, wick are fixed at the very top.

FULL SWING

All Micro Air arms swing a full 180° from left to right.

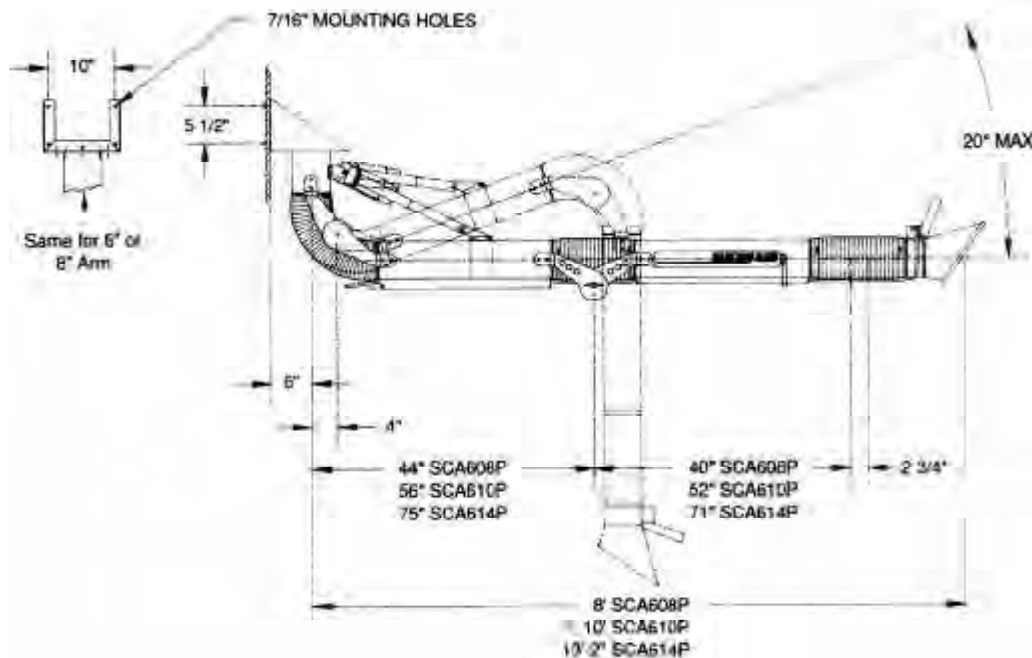


APPLICATIONS

All Micro Air arms can be used with Micro Air Air Cleaners to capture and filter the contaminant, then recirculate clean air back into the work environment. Plus, Micro Air distributors are factory trained to size the total system that best suits your needs.

MODEL SCA-P- REVOLUTIONARY MOTORIZED ARM

- ✍ Linear Actuator Moves Arm Up and Down
- ✍ 6" and 8" Diameter
- ✍ 8', 10', and 14' Length
- ✍ Externally Supported Arm
- ✍ Lighted Hood
- ✍ Cable Protection System
- ✍ Motor/Blowers Available



SPECIFICATIONS

MODEL	DIAMETER	LENGTH	WEIGHT
608P	6" (152 mm)	8' (2.6 m)	56 lbs. (24.5 kg)
610P	6"	10' (3.0 m)	59 lbs. (26.8 kg)
614P	6"	14' (4.3 m)	64 lbs. (29.1 kg)
808P	8" (203 mm)	8' (2.6 m)	68 lbs. (30.9 kg)
810P	8"	10' (3.0 m)	73 lbs. (33.2 kg)
814P	8"	14' (4.3 m)	80 lbs. (36.4 kg)

Arm Assembly: Two 24 gauge galvaneal steel tubes connected via flex hose and two external joints at the middle joint.

Controls: Motor/Blower, light, and linear actuator switches are located at the hood.

Light: 12 volt Halogen lamp at 4 amps – standard.

Hood: 16 gauge steel. Mesh guard prevents large objects from entering hose. Hood swivels 360°.

Linear Actuator: Moves arm up and down at top. 1/8 hp. TEFC motor, 12" stroke at 35 in./min. 120 V at 2.1 amps, 24 V control circuit.

Mounting Bracket: Heavy duty welded steel-standard.

Air Volume: 6" diameter arms – 600 CFM (nominal), 3055 FPM, with 1 hp. exhauster
8" diameter arms – 1150 CFM (nominal) 3295 FPM with 3hp. exhauster.

Control Box: Standard with arm.

Exhauster Motor/Blower:

*TEFC, 1 hp. (1 kw) single phase, 120 V, 12.0 amps.

*TEFC, 1 hp. (1 kw) three phase, 208/230/460 V 3.2 amps.

TEFC, 3 hp. (3 kw) three phase, 208/230/460 V 8.0 amps.

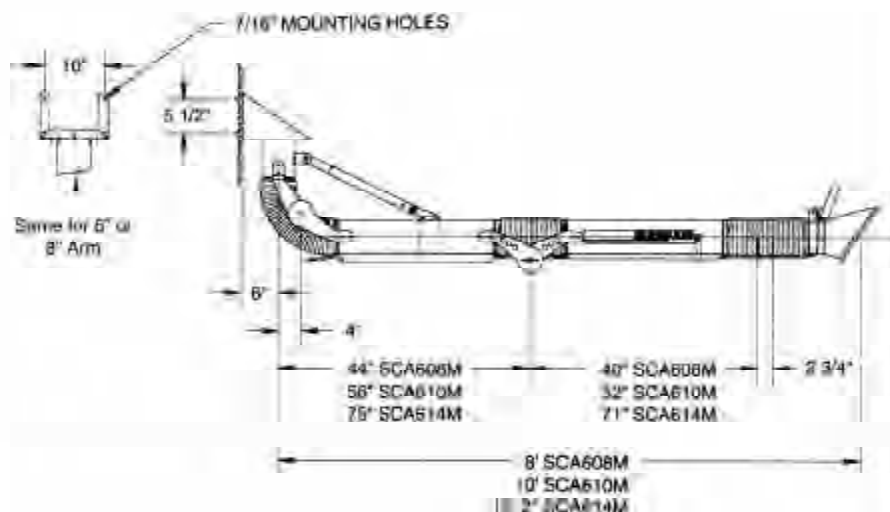
*Used with 6" diameter arm only.

Finish: Industrial grade textured baked crimson red enamel paint on arm components. Hood, and mounting brackets black.

SCA MODEL "M" ARMS



- ✘ Up and Down Movement Via Gas Shock
- ✘ 6" and 8" Diameter
- ✘ 8', 10', and 14' Length
- ✘ Externally Supported Arm
- ✘ Lighted Hood
- ✘ Cable Protection System
- ✘ Motor/Blowers Available



SPECIFICATIONS

MODEL	DIAMETER	LENGTH	WEIGHT
608M	6" (152 mm)	8' (2.6 m)	56 lbs. (24.5 kg)
610M	6"	10' (3.0 m)	59 lbs. (26.8 kg)
614M	6"	14' (4.3 m)	64 lbs. (29.1 kg)
808M	8" (203 mm)	8' (2.6 m)	68 lbs. (30.9 kg)
810M	8"	10' (3.0 m)	73 lbs. (33.2 kg)
814M	8"	14' (4.3 m)	80 lbs. (36.4 kg)

Arm Assembly: Two 24 gauge galvaneal steel tubes connected via flex hose and two external joints at the middle joint.

Controls: Motor/Blower, and light switches at the hood.

Light: 12 volt Halogen lamp at 4 amps – standard.

Damper: Rotated open and shut via handle on side of arm. - standard.

Hood: 16 gauge steel. Mesh guard prevents large objects from entering hose. Hood swivels 360°.

Arm Support: Sealed gas shock absorber.

Mounting Bracket: Heavy duty welded steel-standard.

Air Volume:

6" diameter arms – 600 CFM (nominal), 3055 FPM, with 1 hp. exhauster

8" diameter arms – 1150 CFM (nominal) 3295 FPM with 3hp. exhauster.

Control Box: Standard with arm.

Exhauster Motor/Blower:

*TEFC, 1 hp. (1 kw) single phase, 120 V, 12.0 amps.

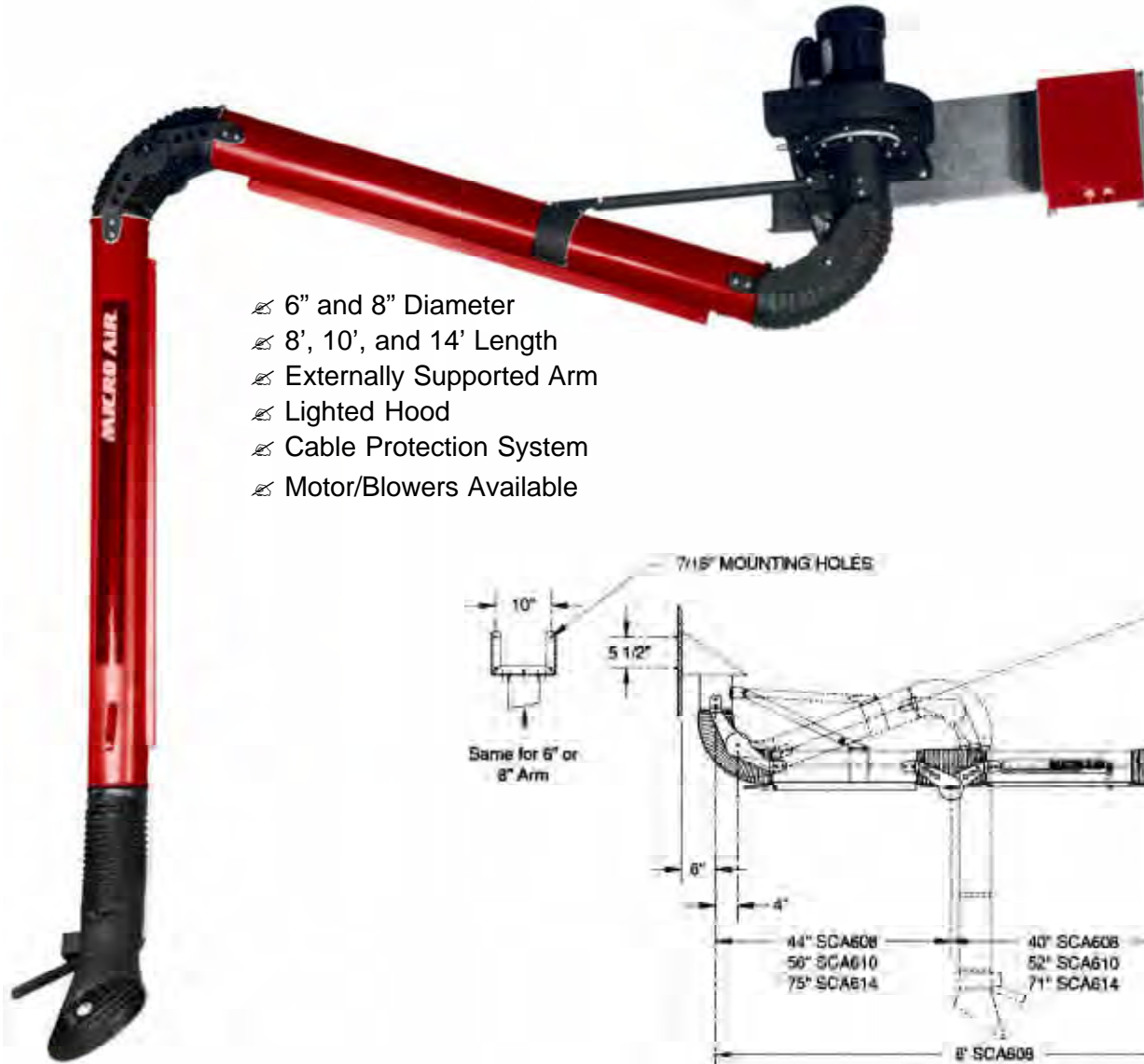
*TEFC, 1 hp. (1 kw) three phase, 208/230/460 V 3.2 amps.

TEFC, 3 hp. (3 kw) three phase, 208/230/460 V 8.0 amps.

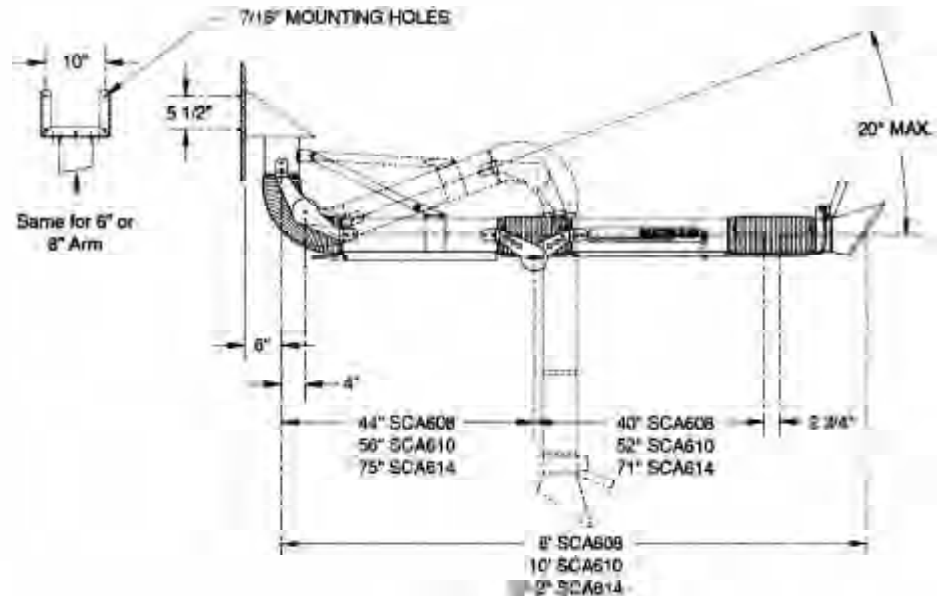
*Used with 6" diameter arm only.

Finish: Industrial grade textured baked crimson red enamel paint on arm components. Hood, and mounting brackets black.

MODEL SCA - FIXED ARMS



- ✍ 6" and 8" Diameter
- ✍ 8', 10', and 14' Length
- ✍ Externally Supported Arm
- ✍ Lighted Hood
- ✍ Cable Protection System
- ✍ Motor/Blowers Available



SPECIFICATIONS

MODEL	DIAMETER	LENGTH	WEIGHT
608	6" (152 mm)	8' (2.6 m)	44 lbs. (20.0 kg)
610	6"	10' (3.0 m)	47 lbs. (21.4 kg)
614	6"	14' (4.3 m)	52 lbs. (23.6 kg)
808	8" (203 mm)	8' (2.6 m)	56 lbs. (24.5 kg)
810	8"	10' (3.0 m)	61 lbs. (27.7 kg)
814	8"	14' (4.3 m)	68 lbs. (30.9 kg)

Arm Assembly: Two 24 gauge galvaneal steel tubes connected via flex hose and two external joints at the middle joint.

Controls: Motor/Blower, and light switches at the hood.

Light: 12 volt Halogen lamp at 4 amps – standard.

Damper: Rotated open and shut via handle on side of arm.

Hood: 16 gauge steel. Mesh guard prevents large objects from entering hose. Hood swivels 360°.

Top Adjustment: Arm is easily adjusted at the top by sliding the bands to the desired position, and tightening the clamp.

Mounting Bracket: Heavy duty welded steel-standard.

Air Volume:

- 6" diameter arms – 600 CFM (nominal), 3055 FPM, with 1 hp. exhauster
- 8" diameter arms – 1150 CFM (nominal) 3295 FPM with 3hp. exhauster.

Control Box: Standard with arm.

Exhauster Motor/Blower:

- *TEFC, 1 hp. (1 kw) single phase, 120 V, 12.0 amps.
- *TEFC, 1 hp. (1 kw) three phase, 208/230/460 V 3.2 amps.
- TEFC, 3 hp. (3 kw) three phase, 208/230/460 V 8.0 amps.

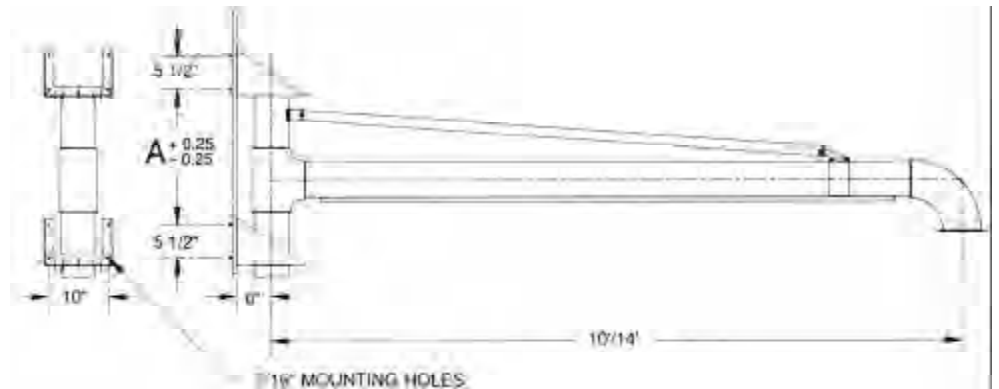
*Used with 6" diameter arm only.

Finish: Industrial grade textured baked crimson red enamel paint on arm components. Hood, and mounting brackets black.

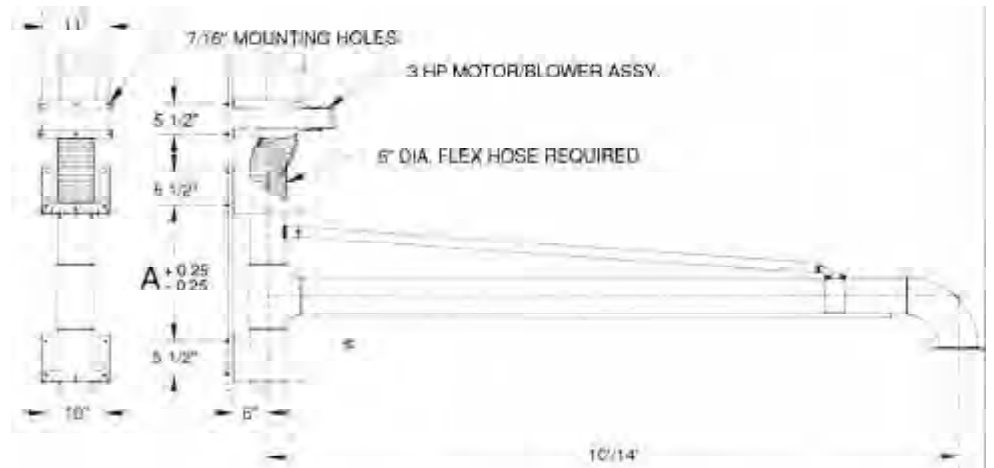
MICRO AIR BOOM ARMS



- ✘ Extends Working Range of SCA Arms
- ✘ Two Models Available - 10' and 14'
- ✘ Mounting System Allows for Two Arm Operation
- ✘ Heavy Duty Construction
- ✘ Available in Both 6" and 8" Diameters



22.875	SCBA - 6" BOOM
38.375	SCBA8 - 8" BOOM
"A"	DESCRIPTION



SPECIFICATIONS

MODEL	DIAMETER	LENGTH	WEIGHT
SBA10	6" (152 mm)	10' (2.6 m)	220 lbs. (99.8 kg)
SBA14	6"	14' (3.0 m)	250 lbs. (113.4 kg)
SBA810	8"	10' (4.3 m)	320 lbs. (145.2 kg)
SBA814	8" (203 mm)	14' (2.6 m)	350 lbs. (158.8 kg)

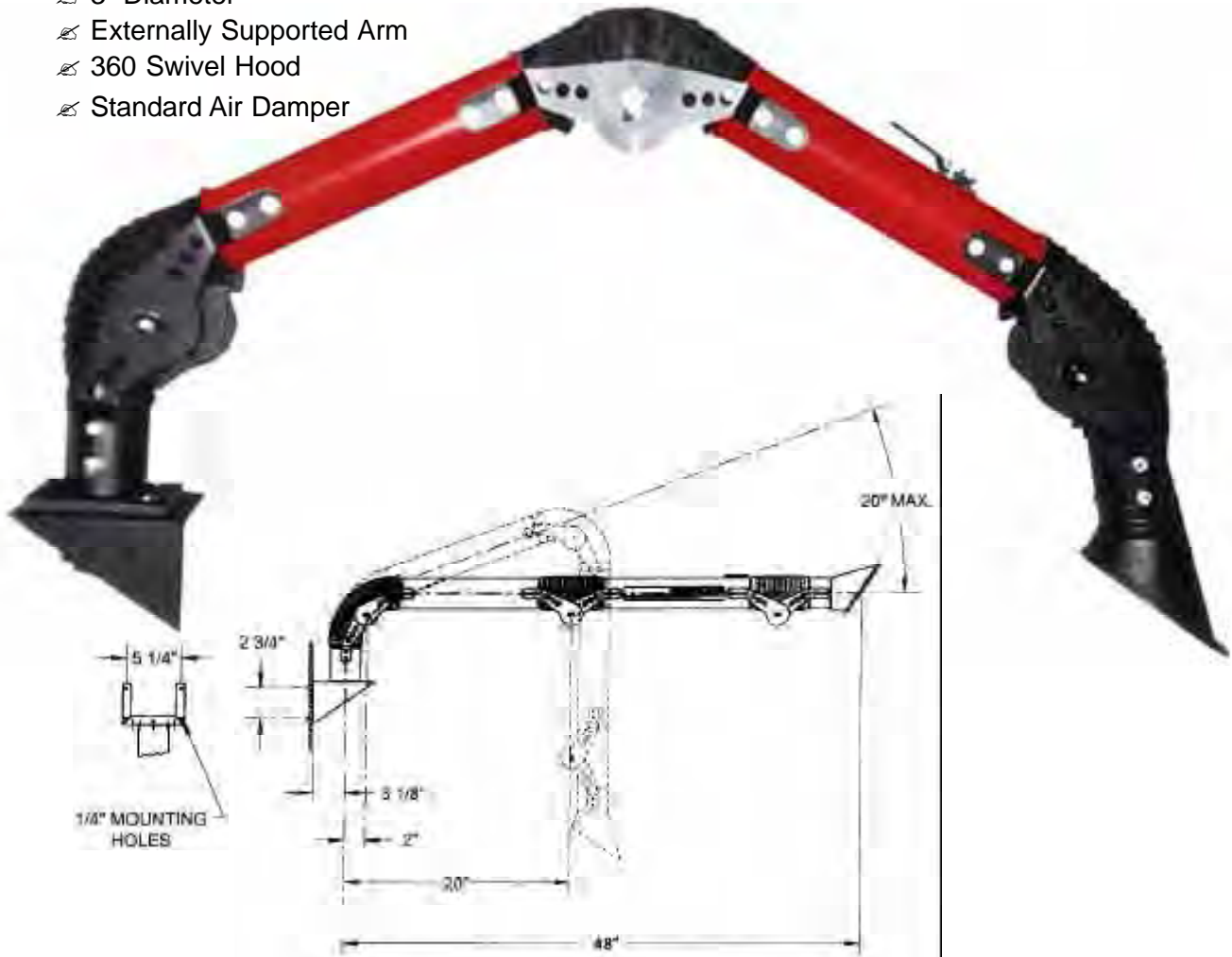
Boom Arm Assembly: 14 gauge welded steel tubing connected via weld to schedule 40 elbow and tee.

Finish: Industrial grade textured baked crimson red enamel paint.

Note: Any 6" or 8" diameter SCA arm (fixed or powered, 8' 10' or 14' length) can be attached to the appropriate 6" or 8" diameter boom arm.

MODEL SCA 304 ARM

- ✍ 3" Diameter
- ✍ Externally Supported Arm
- ✍ 360 Swivel Hood
- ✍ Standard Air Damper



SPECIFICATIONS

MODEL: SCA 304

DIAMETER: 3"

LENGTH: 4'

WEIGHT: 12 lbs. actual, 18 lbs. shipping.

Arm Assembly: Two reinforced 3" diameter aluminum alloy tubes connected via flex hose and two external supports at the middle joint. Tubes are .050 wall thickness.

Mounting Bracket: Heavy duty welded steel. Table mount bracket is standard. Wall mount bracket is optional.

Arm Adjustment: Arm is externally supported. Adjustment is quick and easy by simply turning the knobs at the joints as needed.

Hood: 16 gauge steel hood that swivels 360°.

Damper: Rotated open and shut via handle on side of arm.

Arm Adjustment: Arm moves up and down and swivels 360°.

Finish: Industrial grade textured baked crimson red enamel paint on arm components. Hood, and mounting brackets black.

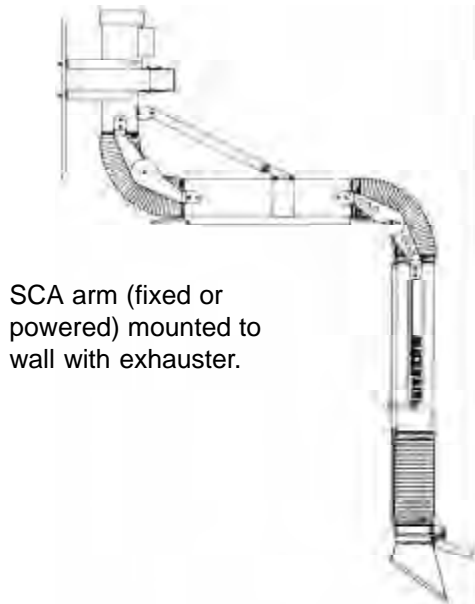
Hose: Flex connecting hose is high temperature and oil resistant.

Warranty: Limited two-year warranty from the date of installation on all replacement parts due to faulty workmanship.

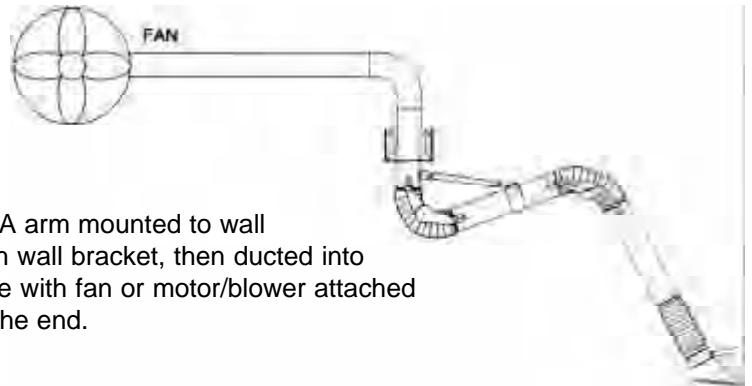
Options: Light kit and wall bracket.

Manufacture: Arm is manufactured in the U.S.A.

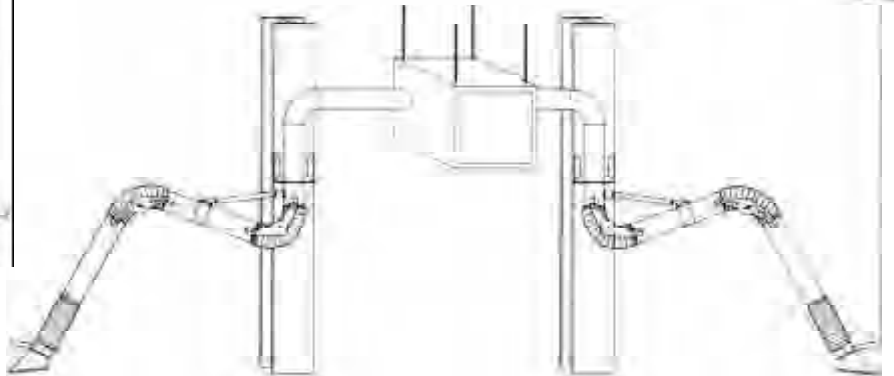
TYPICAL INSTALLATIONS



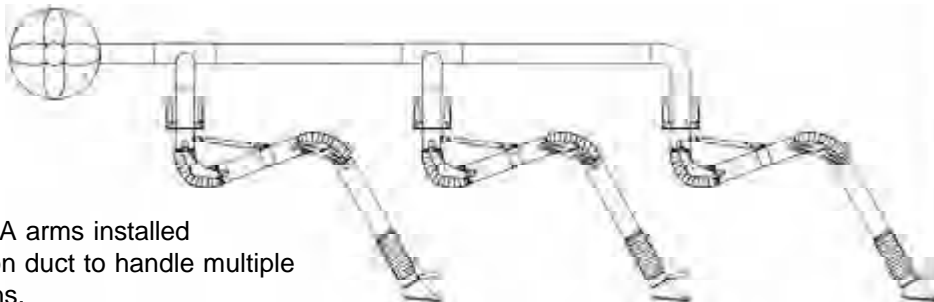
SCA arm (fixed or powered) mounted to wall with exhauster.



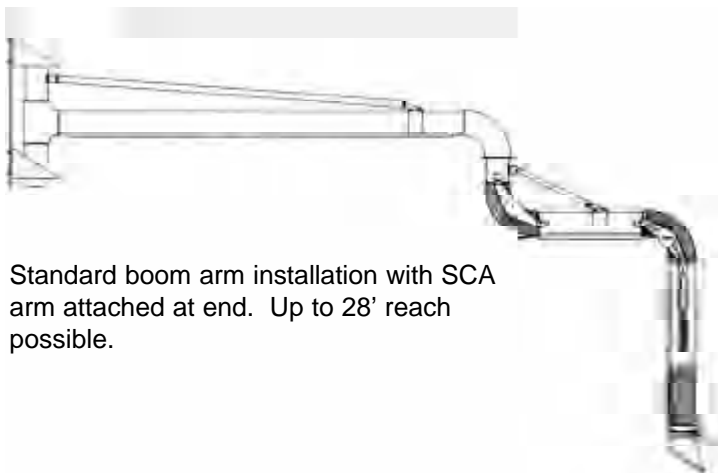
SCA arm mounted to wall with wall bracket, then ducted into pipe with fan or motor/blower attached at the end.



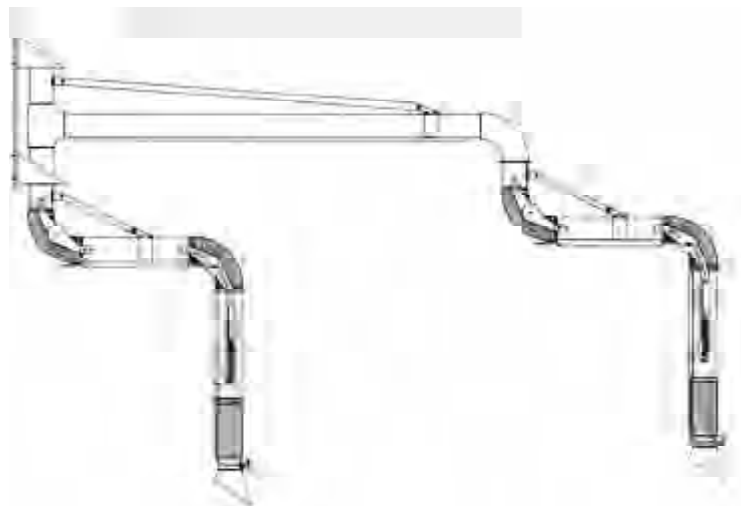
Two SCA arms installed to wall via wall brackets, then ducted into Micro Air air cleaner.



Multiple SCA arms installed into common duct to handle multiple work stations.



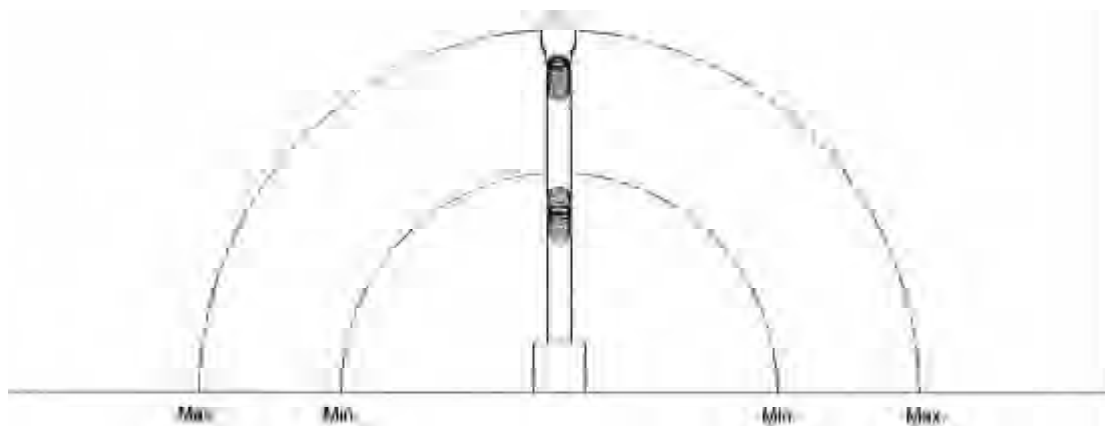
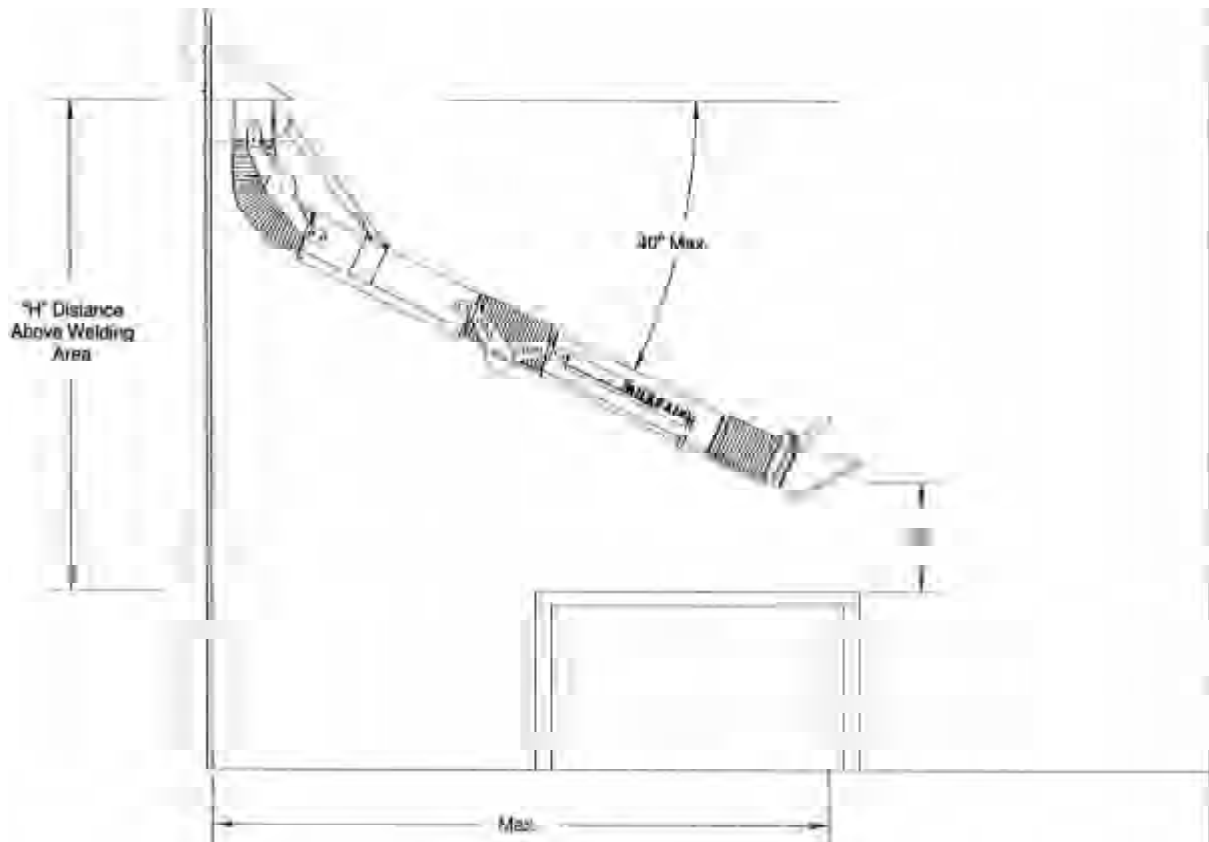
Standard boom arm installation with SCA arm attached at end. Up to 28' reach possible.



Boom arm mounted to wall with two SCA arms utilized, one at end of boom, and one at bottom of the mounting bracket.



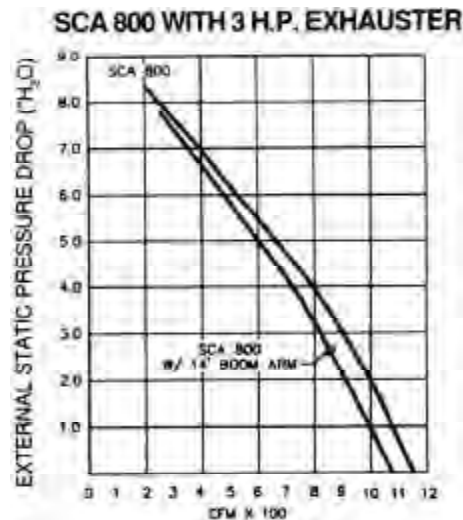
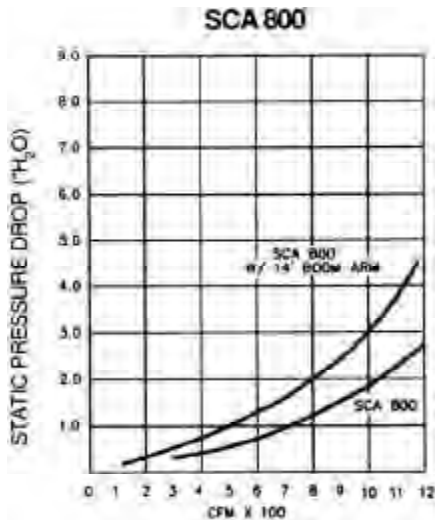
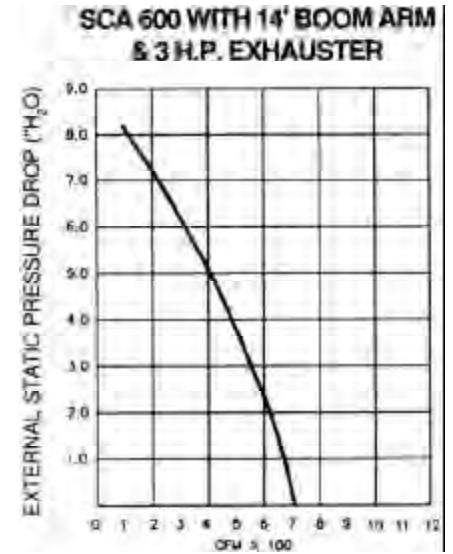
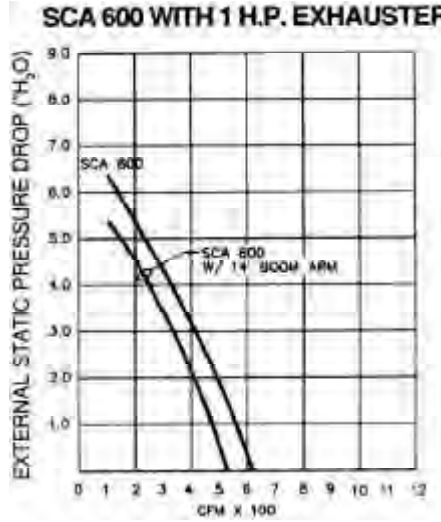
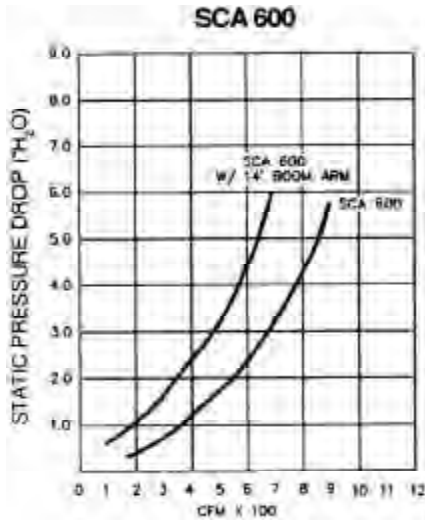
TECHNICAL DATA



HEIGHT ABOVE WELD SURFACE (FT)	8FT ARM		10FT ARM		14FT ARM	
	MIN RADIUS (FT)	MAX RADIUS (FT)	MIN RADIUS	MAX RADIUS	MIN RADIUS	MAX RADIUS
4	7.9	8.3	9.8	10.4	13.2	13.6
6	6.8	8.0	8.8	10.1	12.5	13.4
6	4.3	7.6	7.5	9.8	11.7	13.1
7	4.5	6.9	5.4	9.3	10.4	12.8
8	4.3	5.9	5.5	8.6	6.7	12.3
9			5.4	7.8	6.9	10.6
10			5.0	6.3	7.1	9.9
11					6.8	6.7
12						
13						
14						

TECHNICAL DATA

Illustrated below are various blower curves for the SCA product line. These are intended for your information, and illustrate the change in pressure drop in relation to the air volume. A minimum of 400 CFM (SCA600) and 725 CFM (SCA800) is recommended for each fume extractor for normal welding. For multiple station applications, or any other situation, please contact your local Micro Air distributor for assistance.



Exhaust Opening on 1 HP Exhauster = 3 1/2" x 4"

Exhaust Opening on 3 HP Exhauster = 4" x 5"

MICRO AIR
AIR CLEANERS

Products of Metal-Fab, Inc.

P. O. Box 1138 • Wichita, KS 67201
(316) 943-2351 • FAX (316) 943-2717