

# SPECIFICATIONS

## MODEL SCA - SOURCE CAPTURE ARM



MODEL	DIA.	LENGTH	WEIGHT
405	4"	5'	21 lbs
407	4"	7'	23 lbs.
607	6"	7'	48 lbs.
609	6"	9'	51 lbs.
612	6"	12'	59 lbs.
807	8"	7'	59 lbs.
809	8"	9'	64 lbs.
812	8"	12'	67 lbs.

**Arm Assembly:** Two 24-gauge galvaneal steel tubes connected via flame retardant flex hose.

**Controls:** Motor/blower and light switches are located at the hood.

**Light:** 12 volt Halogen lamp at 4 amps, transformer provided in control box.

**Damper:** Rotated open and shut via handle on side of arm.

**Hood:** 24-gauge aluminum.

**Mounting Bracket:** 3/16" thick welded steel.

**Air Volume With Optional Supplied Blowers:**

- 4" diameter arms - 400 CFM (maximum)
  - 6" diameter 1HP arms - 800 CFM (maximum)
  - 6" diameter 3HP arms - 1000 CFM (maximum)
  - 8" diameter 3HP arms - 2000 CFM (maximum)
- See pressure drop charts for common blower sizing.

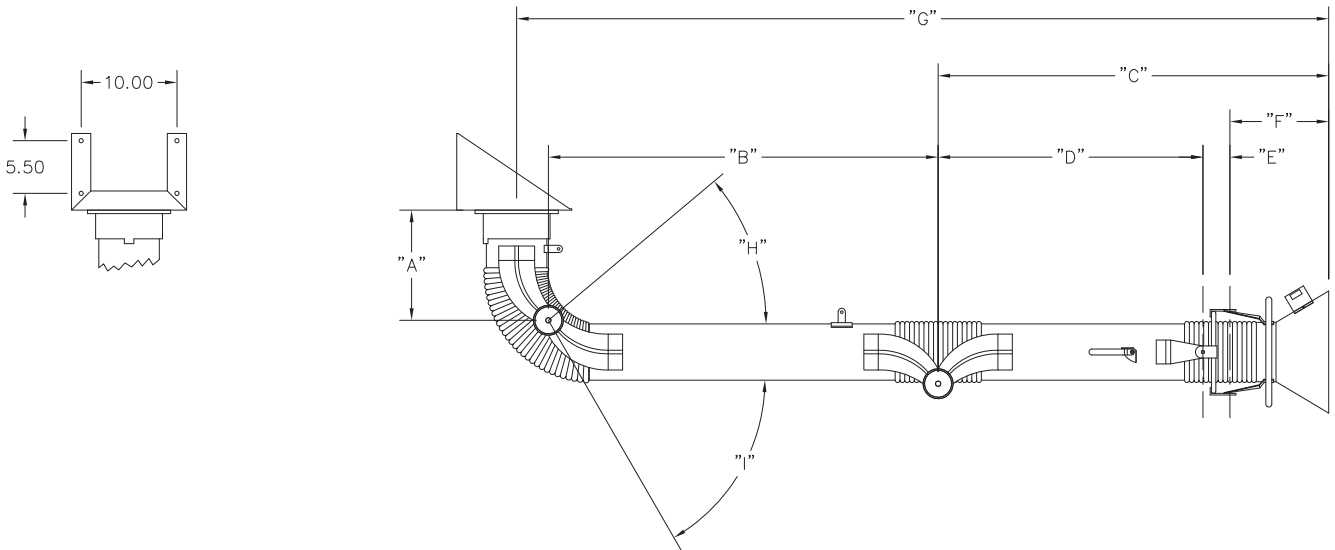
**Control Box:** Standard with arm.

**Exhauster Motor/Blower:**

- TEFC, 1HP single phase, 120 volt (4" & 6")
- TEFC, 1HP 3-phase, 230/460 volt (6" only).
- TEFC, 3HP 3-phase, 230/460 volt (6" & 8")

**Finish:** Industrail grade textured baked enamel paint.

HANGING	"A"	"B"	"C"	"D"	"E"	"F"	"G"	"H"	"I"
SCA405	7.25	28.78	33.50	22.06	3.19	8.25	64.54	40°	90°
SCA407	7.25	36.65	41.37	29.93	3.19	8.25	80.29	50°	90°
SCA607	11.50	40.69	40.78	27.65	2.81	10.31	84.77	38°	90°
SCA609	11.50	48.56	60.46	47.34	2.81	10.31	112.33	60°	90°
SCA612	11.50	72.16	68.34	55.21	2.81	10.31	143.83	60°	60°
SCA807	12.50	41.87	42.60	28.97	2.81	10.81	88.56	45°	90°
SCA809	12.50	57.66	54.41	40.78	2.81	10.81	116.11	70°	90°
SCA812	12.50	72.41	70.16	56.53	2.81	10.81	146.61	68°	60°



# REMOTE BLOWER PRESSURE DROP CURVES

