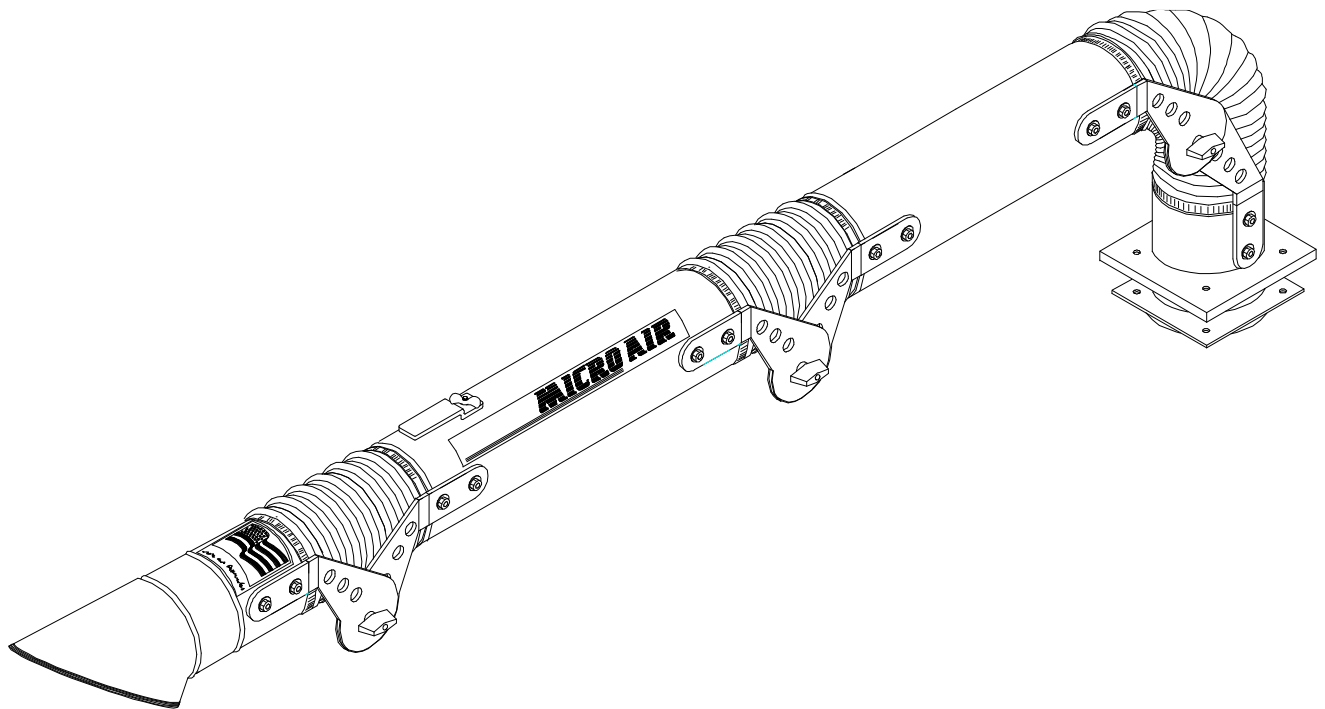


# MICROAIR®

## AIR CLEANERS



### SCA 304

### Source Capture Arm

# OWNER'S MANUAL

## CAUTION

Read complete instructions before operating.  
Please file for future reference.

## MODEL SCA 304 SPECIFICATIONS

<b>Diameter:</b>	3"
<b>Length</b>	4'
<b>Weight:</b>	12 lbs. actual, 18 lbs. shipping

## PRE-OPERATING INSTRUCTIONS

1. Open cardboard carton(s) and remove unit. Remove packaging supports from arm assembly. Be careful not to dent the aluminum tubes on the arm during unpacking.
2. Inspect the unit for damage that may have been caused during shipping. Immediately report any such damage to the shipping carrier.
3. Examine the unpacked unit and compare it to the parts list description to verify that all components are received. If a component is missing from the assembly, contact your Micro Air® representative.

## INSTALLATION INSTRUCTIONS

**NOTE:** Due to the numerous system combinations available, some of the following installation steps may not be applicable. Follow steps that directly address the specific system being installed.

**CAUTION:** TYPICAL INSTALLATIONS REQUIRE THAT THE GUSSET ASSEMBLY BE MOUNTED TO A TABLE. BE SURE THAT THE TABLE IS STRUCTURALLY SUFFICIENT TO SUPPORT THE ARM BEING INSTALLED.

1. Determine the location where the arm assembly will be installed
2. Locate the collar weldment collar-side up on the table top at the desired location. Secure to table top with clamps or sturdy tape.
3. Place a transfer punch in each of the four holes of the collar weldment and strike with a hammer. (See Figure 1).
4. If jigsaw is used, scribe the table on the inside of the collar weldment with a scratch awl.
5. If hole saw is to be used, remove the collar weldment from table; and using a straightedge, scribe an "X" between the four marks made by the punch
6. Drill the four 0.281" holes and drill/saw the 3" center hole.
7. Place the free nylon plate onto the table surface followed by the spacer plate and the arm assembly. insert four 1/4" bolts and four flat washers into the holes.
8. On the under side of the table top, install the collar weldment and secure with hardware. (See Figure 2)

## GENERAL MAINTENANCE

1. Occasionally check the condition of the flexible hose for any opening that will allow air to flow through. For replacement, see parts list.
2. Periodically inspect hardware for loose nuts and bolts around swivel base areas. Tighten if needed.

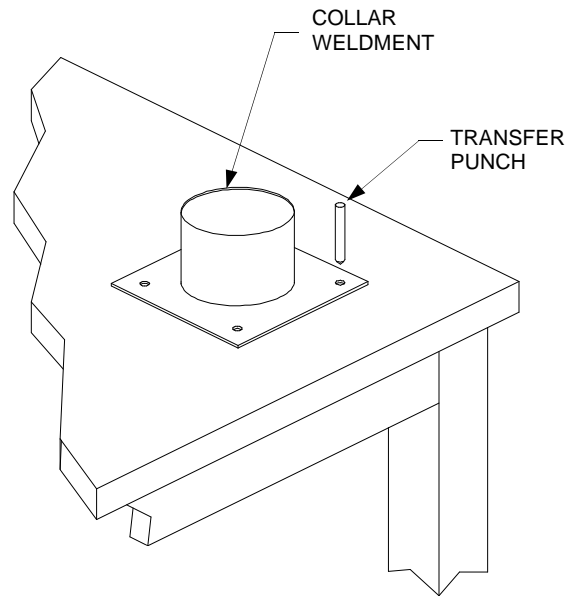


Figure 1

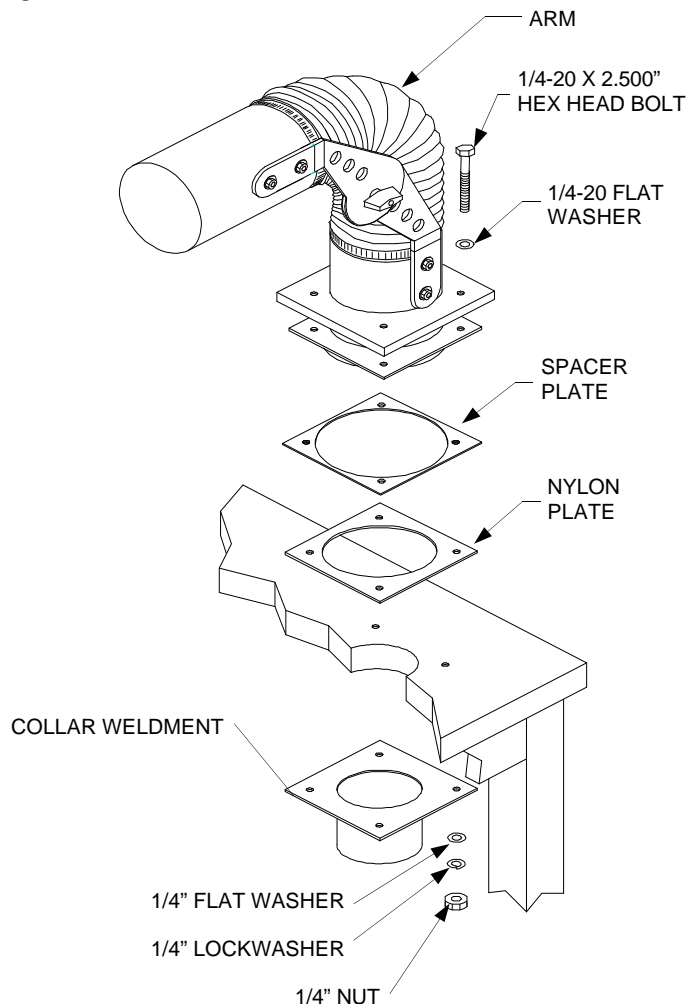
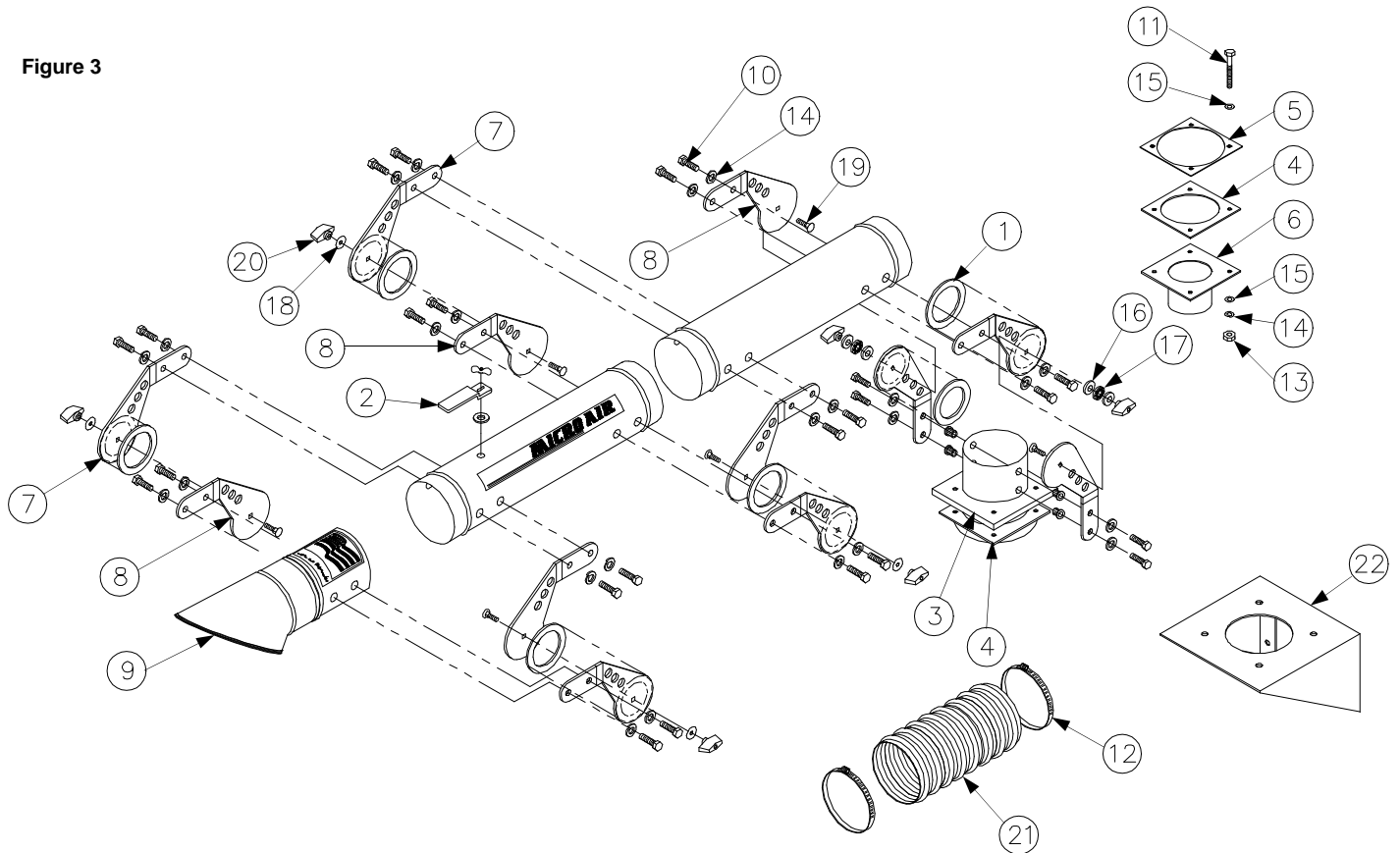


Figure 2

# SCA 304 ARM ASSEMBLY PARTS LIST

Figure 3



ITEM	PART NO.	DESCRIPTION	ITEM	PART NO.	DESCRIPTION
1.	36030-03	Disk Pad	12.	P1995	Adjustable Hose Clamp
2.	36344-01	Damper Handle	13.	P203	1/4-20 Hex Nut
3.	36354-01	3" Cover Plate	14.	P242	1/4" Lock Washer
4.	36354-02	3" Shm plate Nylon	15.	P244	1/4" Flat Washer
5.	36354-03	3" Shm Plate Metal	16.	P2599	Washer ( For P2618)
6.	36357-01	Collar Weldment	17.	P2618	Thrust Bearing
7.	36359-01	Joint Down / Up	18.	P2620	Nylon Washer
8.	36359-02	Joint Up / Down	19.	P338	1/4-20 X 1 Carriage Bolt
9.	P1342	Edge Guard-Hood (1.33 FT)	20.	P3506	1/4-20 Open End Knob
10.	P164	1/4-20 X 3/4 Hex Head Bolt	21.	P3515	3 X 12 Scfr Hose
11.	P1885	1/4-20 X 2-1/2 Hex Head Bolt	22.	36355-01	Gusset (Optional)

**NOTE:** Metal-Fab reserves the right to make engineering/design changes without notice. Verify all part numbers with your Micro Air® Distributor prior to ordering.

