

# MICRO AIR<sup>®</sup>

## AIR CLEANERS



**M2150**

# **OWNER'S MANUAL**

## **CAUTION**

READ COMPLETE INSTRUCTIONS BEFORE OPERATING.  
PLEASE FILE FOR FUTURE REFERENCE.

## MODEL M2150 SPECIFICATIONS

Length:	21" at top 34" at bottom
Width:	19"
Height:	51"
Shipping Weight:	210lbs.
Actual weight:	185lbs.
Input Volts:	115 V, 60 Hz
Max. Current:	8.5 amps @ 115 V.
Motor:	3/4 HP
Arm:	6" dia. 8' long

## PACKAGE CONTENTS

1 Ea. M2150	16 Ea. 5/16" bolt
1 Ea. Owner's Manual	16 Ea. 5/16" hex nut
2 Ea. Swivel Caster	16 Ea. Flat Washer
2 Ea. Fixed Caster	5/16" Lock Washer

## PRE-OPERATING INSTRUCTIONS

1. After removing the cardboard carton from the air cleaner, remove the plastic wrapping.
2. Open the filter door and remove the multi cell filter and pre-filter. Open the base door and remove the spark tray. Note that the casters and handle are packaged in the tray.
3. Lay the unit down on its back (the side opposite the arm). Remove the wooden pallet from the unit.
4. With the unit still in the horizontal position, secure the casters to the bottom of the unit. (See FIG. 1)

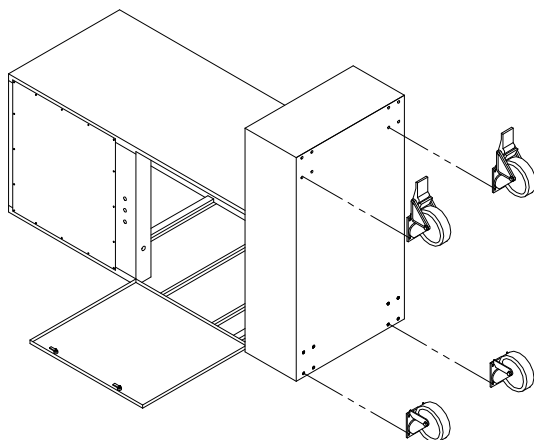


FIG. 1

5. Reinstall spark tray and base door.
6. Slide the prefilter into the channels provided at the bottom of the unit, making sure that the air flow directional arrows are pointed upward.
7. Replace the multi cell filter.
8. Close and latch the filter door.

## OPERATING INSTRUCTIONS

1. Choose a suitable level place near the workstation and position the unit so that the arm assembly will be placed near the source of pollution being generated.
2. Grasp the hood by the handle and position within 12" of the source of pollution.
3. Plug the power cord into a 115 volt, 60 hertz outlet.  
**CAUTION: This power cord is supplied with a grounded type plug. It is intended for use with a grounded outlet, contact qualified personnel to install the proper outlet. Do not alter the plug in any way.**
4. Turn the switch on.
5. Adjust the hood to capture maximum amount of contaminants. Periodically adjust the position of the hood to keep it in the maximum capture range.

## MAINTENANCE

1. Always be sure power switch is turned off before performing any service to the air cleaner.
2. Occasionally check the condition of the drive belt for tightness and wear.
3. Periodically check the blower wheel for debris and dirt. Clean when necessary.
4. Periodically inspect hardware for loose nuts and bolts on access doors and internal components. Tighten if needed.
5. Periodically inspect all wiring for loose connections and cracked insulation. Replace as needed.

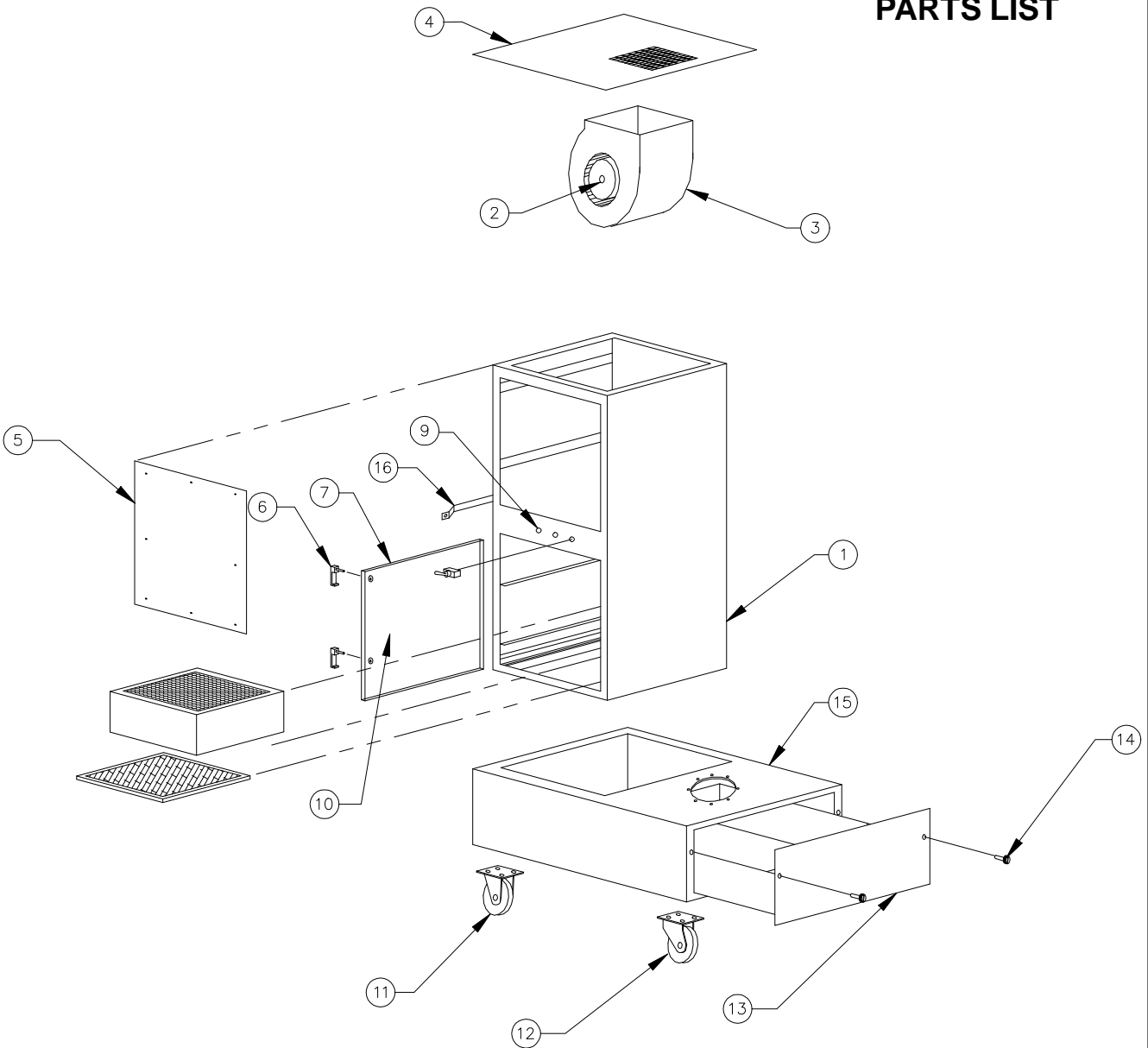
## TROUBLESHOOTING & REPAIRS

- |   |  |
|---|--|
| A. Unit fails to start:                             |  |
| 1. Dead power line:                                 | Check circuit and switch.                                    |
| 2. Blown fuse or breaker:                           | Check fuse or breaker  |
| 3. Burned out motor:                                | Replace motor  |
| B. Unit runs slowly or inadequate capture velocity: |  |
| 1. Wired for wrong voltage:                         | Check input voltage  |
| or improper rotation:                               | Switch L1 & L2 to reverse rotation.<br>Check wiring diagram. |
| 2. Dirty filters:                                   | Clean or replace filters.                                    |
| C. Vibration:                                       |  |
| 1. Loose motor mount bolts:                         | Tighten bolts.   |
| 2. Foreign objects in blower:                       | Remove debris from blower.                                   |
| 3. Dirty disposable filters:                        | Service filters.   |

## WARRANTY

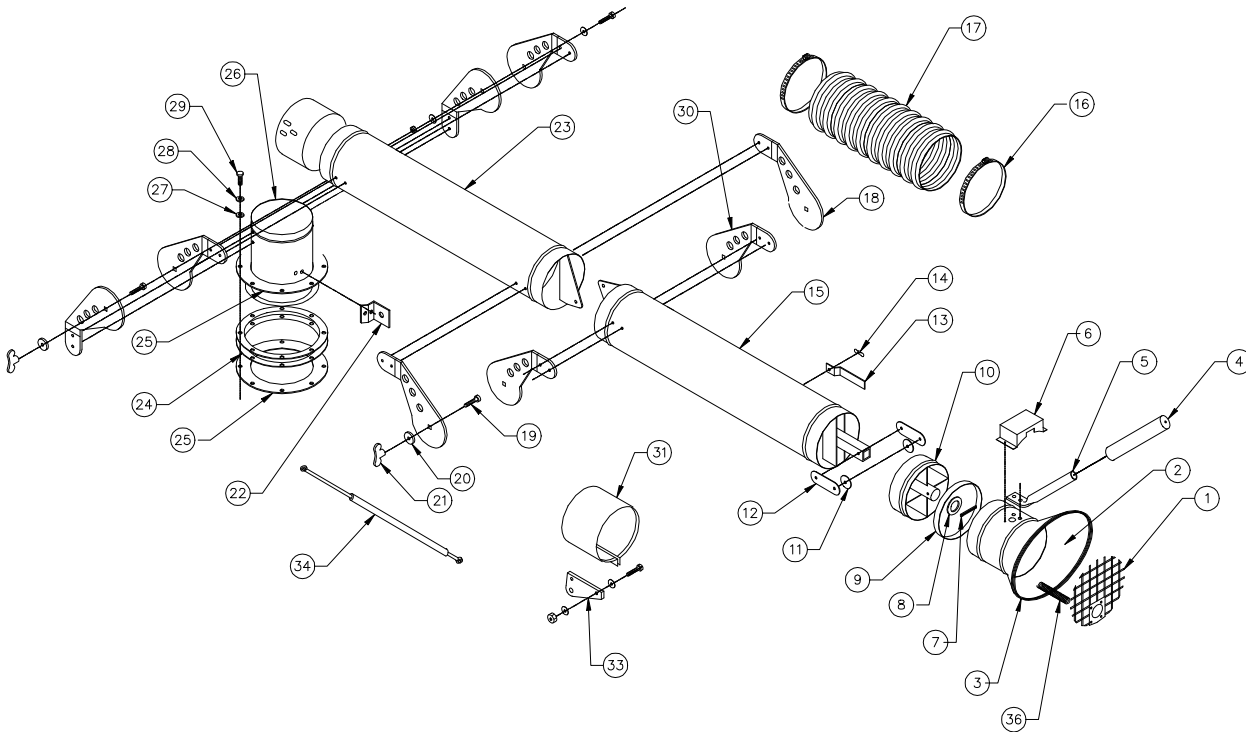
Metal-Fab offers a limited 2 year warranty (from date of installation) on all replacement parts due to faulty workmanship. All patent rights reserved.

**MODEL M2150  
PARTS LIST**



ITEM	PART NO.	DESCRIPTION	ITEM	PART NO.	DESCRIPTION
1.	30238-01	Cabinet Weldment	10.	P2727	Wiring Label
2.	P3570	Motor, 110/220 V, 3/4 HP	11.	P1313	Fixed Caster (2ea. required)
3.	P3575	Blower	12.	P1304	Locking Swivel (2 ea. required)
4.	30240-01	Access Panel Assembly	13.	30428-01	Spark Tray Assembly
5.	30218-01	Blower Access Door	14.	P1856	Spark Tray Latch (2 ea. required)
6.	P1372	Latch		P1857	Spark Tray Latch (2 ea. required)
7.	30232-01	Door Assembly		P1858	Spark Tray Latch (2 ea. required)
8.	P1356	On/Off Switch	15.	30425-03	Base Assembly
9.	P1776	Hole Plug	16.	30473-01	Handle

## M2150 PARTSLIST ARM ONLY



ITEM	PART NO.	DESCRIPTION	ITEM	PART NO.	DESCRIPTION
1.	34236-01	Arm Grille	19.	P2673	Carriage Bolt (4 ea. required)
2.	36533-01	Nozzle Assembly	20.	P2618	Thrust Bearing (4 ea. required)
3.	P1342	Edge Trim	21.	P2619	Plastic Wing Nut (4 ea. required)
4.	P2237	Foam Grip	22.	34258-01	Bracket
5.	36025-01	Handle	23.	36005-01	6" Dia. Arm Section (Base)
6.	36213-01	Handle Cover	24.	36018-05	Shim Ring (1 ea. required)
7.	P200	Cotter Pin	25.	36018-04	Split Ring (2 ea. required)
8.	P125	Washer	26.	36038-01	Base Collar
9.	P2751	Seal	27.	P249	5/16 Lock Washer (8 ea. required)
10.	36532-01	Collar Weldment	28.	P233	5/16 Plain Washer (8 ea. required)
11.	36030-02	Disk Pad	29.	P191	5/16 x 1 1/4 Hex Bolt (8 ea. required)
12.	36535-01	Mini-Half Joint (2 ea. required)	30.	36020-02	Joint Half (4 ea. required)
13.	36044-01	Damper Handle	31.	36024-01	Adjustable Support Clamp
14.	P2623	Spring Bearing Package	32.	P028	Mylar (not shown)(18" required)
15.	36005-07	6" Dia. Arm Section (hood)	33.	34279-01	Anchor
16.	P2232	Hose Clamp (6 ea. required)	34.	P2726	Gas Spring
17.	P2616	Hose Section (3 ea. required)	35.	36205-01	Complete Arm Assembly (not shown)
18.	36020-01	Joint Half (4 ea. required)	36.	P2847	Spring

# MICRO AIR®

## AIR CLEANERS

Products of Metal-Fab, Inc.  
P.O. Box 1138 • Wichita, KS. 67201  
(316) 943 2351 • FAX (316)943-2717