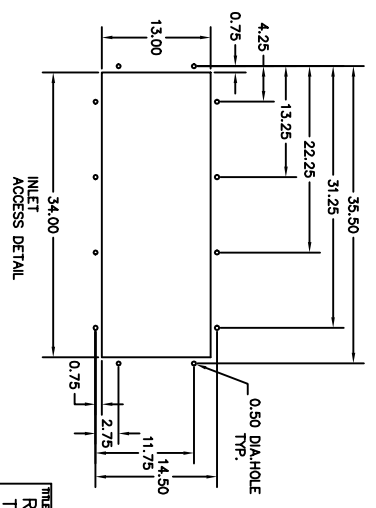
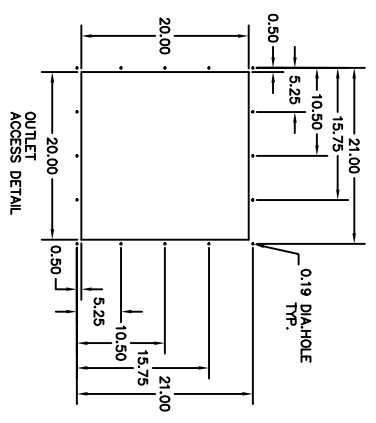
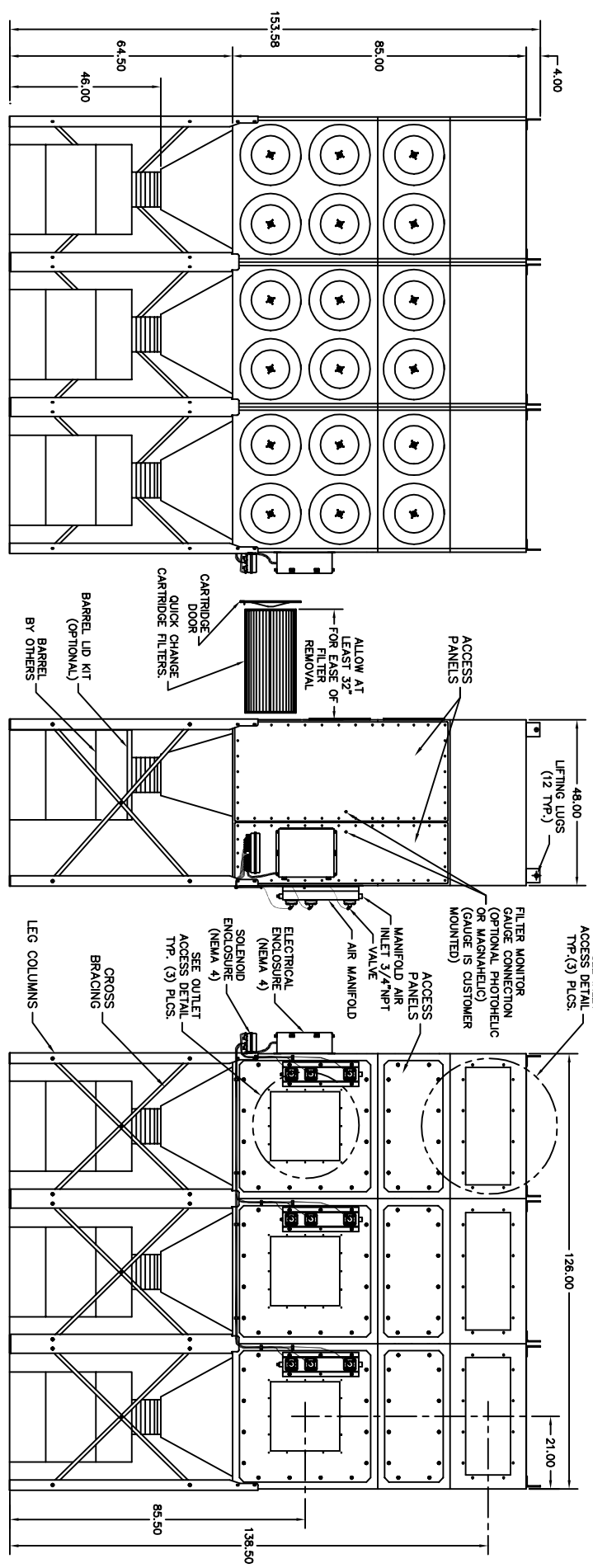


- NOTES
- 1.) UNITS MUST BE ATTACHED TO IN-PLANT COMPRESSED AIR SUPPLY FOR CLEANING MECHANISM TO FUNCTION (90 MAX PSIG CLEAN DRY AIR)
 - 2.) VALVES AND CONTROL TIMER SYSTEM OPERATE ON 120V, 50-Hz. POWER.
 - 3.) WELDED STEEL CONSTRUCTION OF 12 GA. MILD STEEL.
 - 4.) SOLID STATE PULSE CONTROL TIMER IN NEMA 4 ENCLOSURE
 - 5.) PAINTED INSIDE & OUT CRIMSON RED.

SPECIFICATIONS
TOTAL CARTRIDGES. 6
TOTAL CARTRIDGES. 12
COMPRESSED AIR 1.0 SCF @90 psi per sec.

TITLE		TOLERANCES UNLESS	
RP6-2 BOLT		OTHERWISE NOTED	
TOGETHER		3 DEC. PLACES	
DETAIL		1/16" DIA.	
DWG. BY	DATE	SCALE	DATE
MC	12-17-97	1:3=10	
CHKD BY	DATE	SH. 1 OF 4	
JU	11		
DWG. NO. 1563		REV. 2	

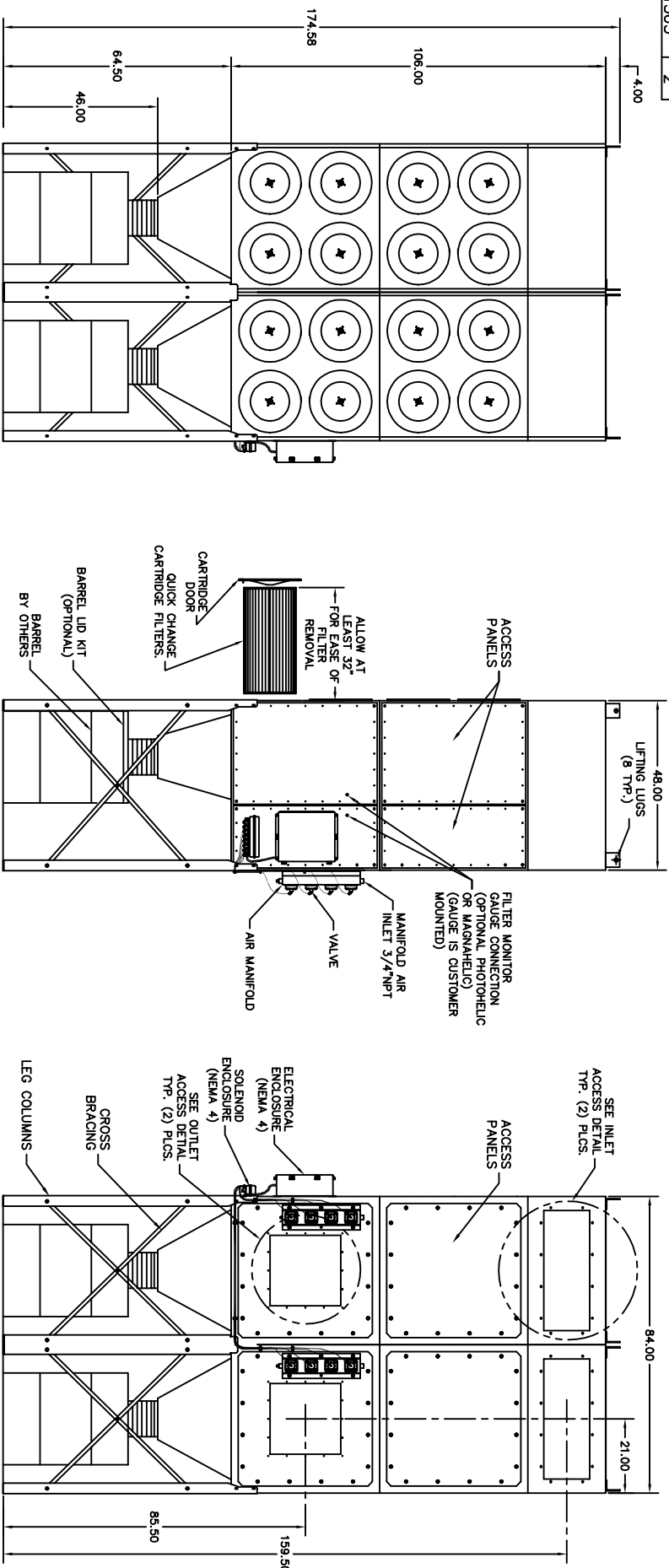




- NOTES
- 1.) UNITS MUST BE ATTACHED TO IN-PLANT COMPRESSED AIR SUPPLY FOR CLEANING MECHANISM TO FUNCTION (90 MAX PSIG CLEAN DRY AIR)
 - 2.) VALVES AND CONTROL TIMER SYSTEM OPERATE ON 120V, 50-Hz. POWER.
 - 3.) WELDED STEEL CONSTRUCTION OF 12 GA. MILD STEEL.
 - 4.) SOLID STATE PULSE CONTROL TIMER IN NEMA 4 ENCLOSURE
 - 5.) PAINTED INSIDE & OUT CRIMSON RED.

SPECIFICATIONS
 TOTAL VALVES 9
 TOTAL CARTRIDGES 18
 COMPRESSED AIR 1.0 SCF @90 psi per sec.

TITLE		TOLERANCES UNLESS NOTED	
RP6-3 BOLT TOGETHER DETAIL		3 DEC. PLACES	
DWG. NO. L1563		SCALE 1/2" = 1"	
REV. 2		DATE 12-17-97	
BY J.D.		CHKD BY J.D.	
DATE 11		SH. 2 OF 4	
DWG. NO. L1563		MFG. NO. 2	



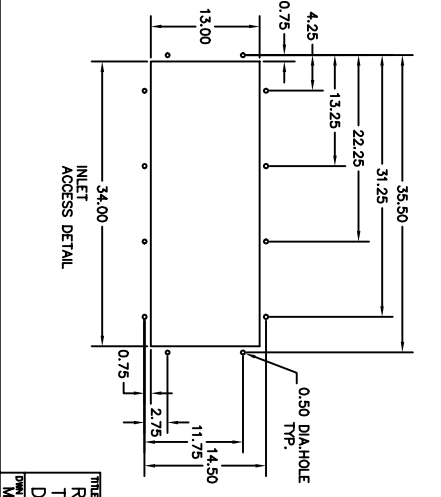
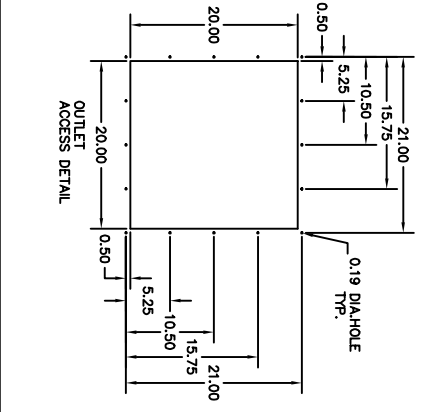
NOTES

- 1.) UNITS MUST BE ATTACHED TO IN-PLANT COMPRESSED AIR SUPPLY FOR CLEANING MECHANISM TO FUNCTION (90 MAX PSIG CLEAN DRY AIR)
- 2.) VALVES AND CONTROL TIMER SYSTEM OPERATE ON 120V, 50-Hz. POWER.
- 3.) WELDED STEEL CONSTRUCTION OF 12 GA. MILD STEEL.
- 4.) SOLID STATE PULSE CONTROL TIMER IN NEMA 4 ENCLOSURE
- 5.) PAINTED INSIDE & OUT GRIMSON RED.

SPECIFICATIONS

TOTAL CARTRIDGES. 8

COMPRESSED AIR. 1.0 SCF @90 psi per sec. 16



TITLE
RP8-2 BOLT TIGHTENER DETAIL

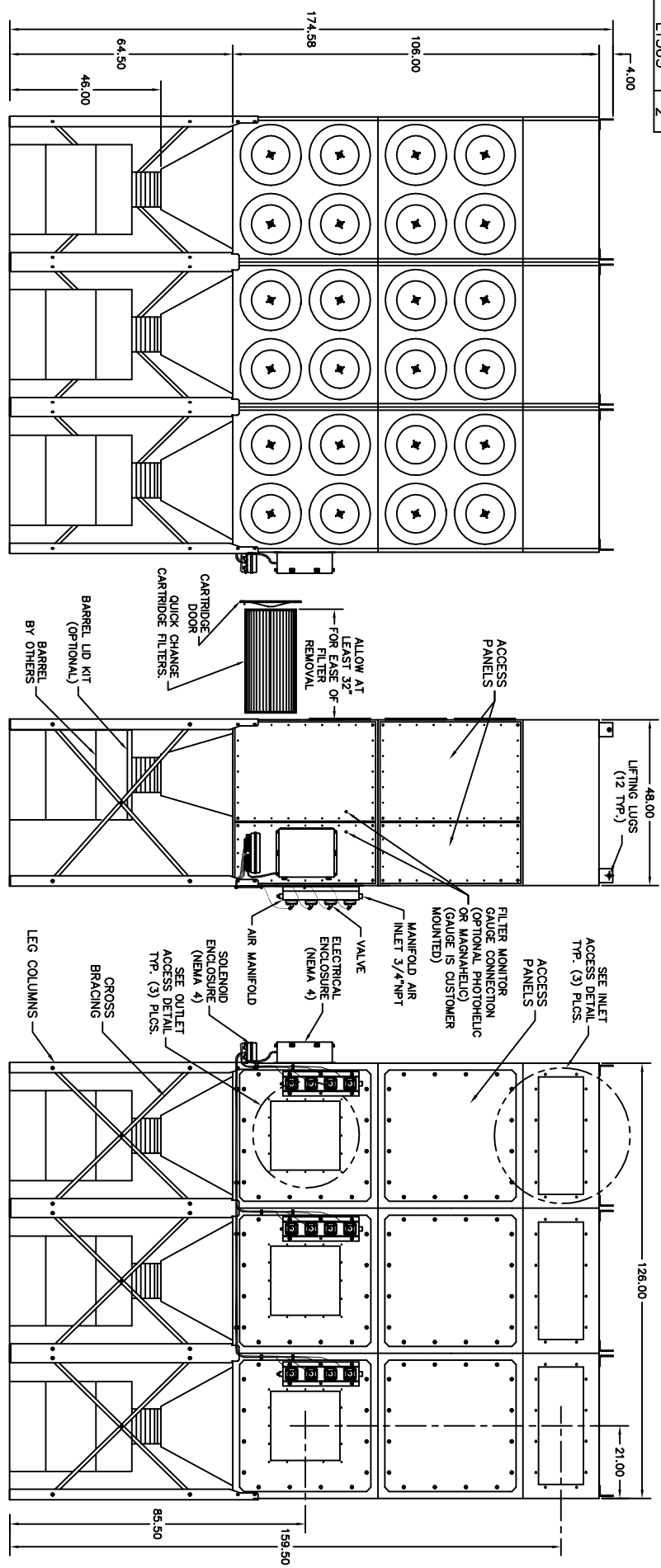
DMC NO. 1563
REV. 2

DATE 12-17-97
BY J.D.
CHKD BY DMC
NO. 11

TOLERANCES UNLESS NOTED OTHERWISE
3 DEC. PLACES 1/16" - 1/8"
SCALE 1:3 = 10'

DMC INC.
METAL FAB
NEW GARDNER, PA 17028
NEW VENTURA, MS 37281

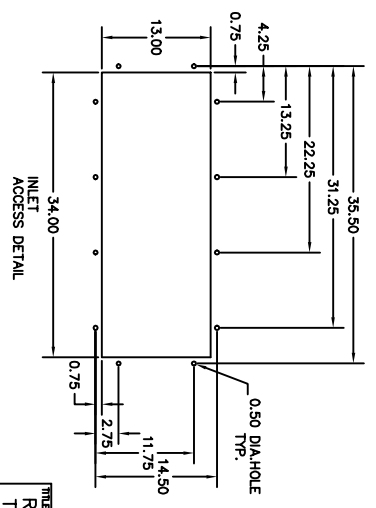
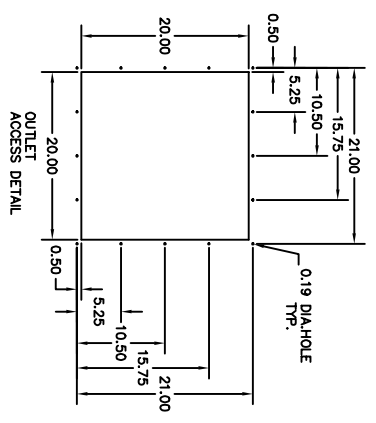
NO. 2



- NOTES**
- 1.) UNITS MUST BE ATTACHED TO IN-PLANT COMPRESSED AIR SUPPLY FOR CLEANING MECHANISM TO FUNCTION (90 MAX PSIG CLEAN DRY AIR)
 - 2.) VALVES AND CONTROL TIMER SYSTEM OPERATE ON 120V, 50-HZ. POWER.
 - 3.) WELDED STEEL CONSTRUCTION OF 12 GA. MILD STEEL.
 - 4.) SOLID STATE PULSE CONTROL TIMER IN NEMA 4 ENCLOSURE.
 - 5.) PAINTED INSIDE & OUT CRIMSON RED.

SPECIFICATIONS

TOTAL VALVES 12
 TOTAL CARTRIDGES 24
 COMPRESSED AIR 1.0 SCF @90 psi per sec.



TITLE		TOLERANCES UNLESS	
RP8-3 BOLT TOGETHER		3 DEC. PLACES	
DETAIL		UNLESS NOTED OTHERWISE	
DMC NO. 1563	REV. 2	SCALE	1/4" = 1"
DATE 12-17-97	BY J.D.	CHECKED BY DMC	11
SH. 4 OF 4		DMC NO. 1563	REV. 2

