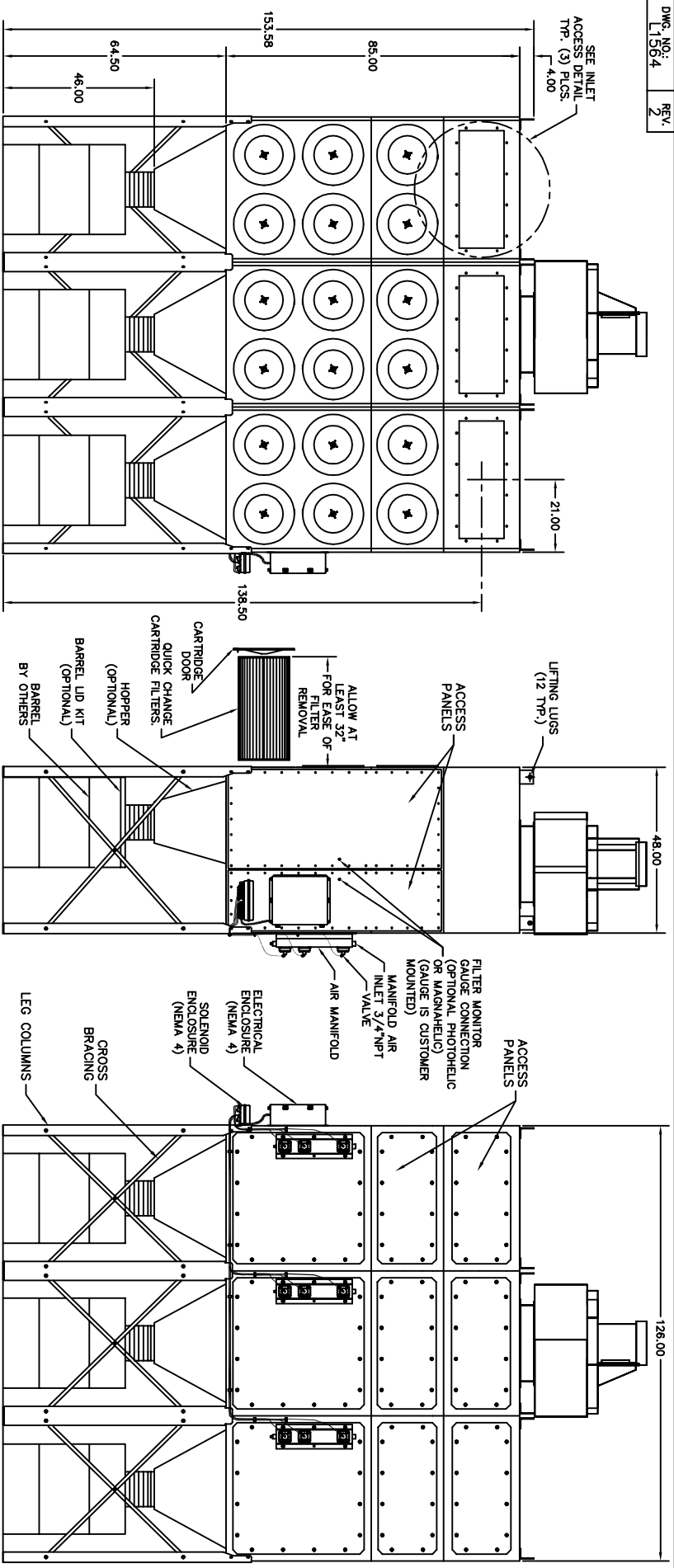


- NOTES
- 1.) CONSULT MANUFACTURER REPRESENTATIVE FOR MOTOR BLOWER HEIGHT AND OTHER SPECIFICATIONS.
  - 2.) UNITS MUST BE ATTACHED TO IN-PLANT COMPRESSED AIR SUPPLY FOR CLEANING MECHANISM TO FUNCTION (90 MAX PSIG CLEAN DRY AIR)
  - 3.) VALVES AND CONTROL TIMER SYSTEM OPERATE ON 120V, 50-Hz. POWER.
  - 4.) WELDED STEEL CONSTRUCTION OF 12 GA. MILD STEEL ENCLASURE
  - 5.) SOLID STATE PULSE CONTROL TIMER IN NEMA 4 ENCLOSURE
  - 6.) PAINTED INSIDE & OUT CRIMSON RED.

SPECIFICATIONS  
TOTAL VALVES 6  
TOTAL CARTRIDGES 12  
COMPRESSED AIR 1.0 SCF @90 psi per sec.

TITLE		TOLERANCES UNLESS OTHERWISE NOTED	
RP6-2 BOLT TOGETHER WITH BLOWER DETAIL		3 DEC. PLACES	1/16"
DWG. NO. 1564		SCALE	1/32"=1"
DATE	12-17-97	CHG. BY	MC
APP'D		CHKD BY	MC
		DATE	11
		SH. 1 OF 4	
DWG. NO. 1564		METAL FAB	



- NOTES
- 1.) CONSULT MANUFACTURER REPRESENTATIVE FOR MOTOR BLOWER HEIGHT AND OTHER SPECIFICATIONS.
  - 2.) UNITS MUST BE ATTACHED TO IN-PLANT COMPRESSED AIR SUPPLY FOR CLEANING MECHANISM TO FUNCTION (90 psig CLEAN DRY AIR)
  - 3.) VALVES AND CONTROL TIMER SYSTEM OPERATE ON 120V, 50-HZ. POWER.
  - 4.) WELDED STEEL CONSTRUCTION OF 12 GA. MILD STEEL.
  - 5.) SOLID STATE PULSE CONTROL TIMER IN NEMA 4 ENCLOSURE.
  - 6.) PAINTED INSIDE & OUT CRIMSON RED.

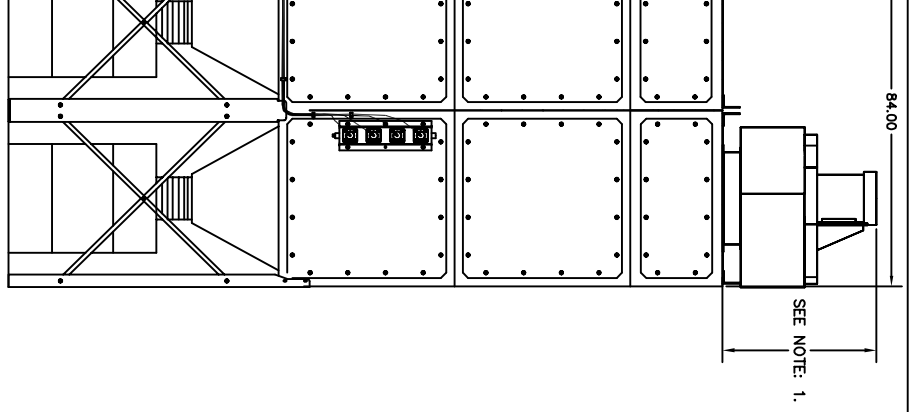
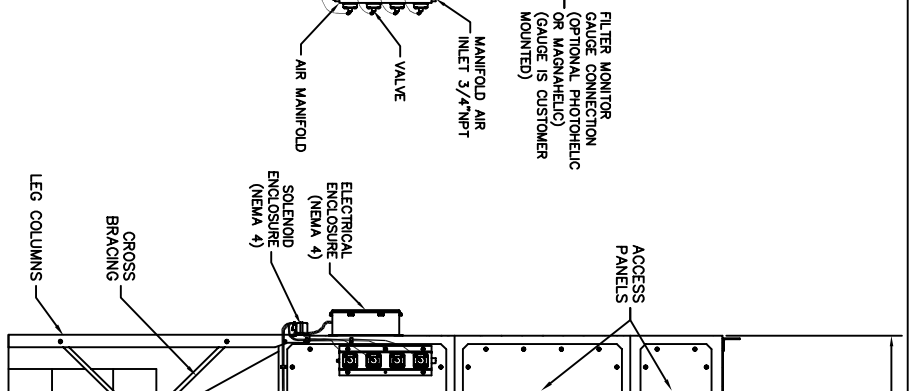
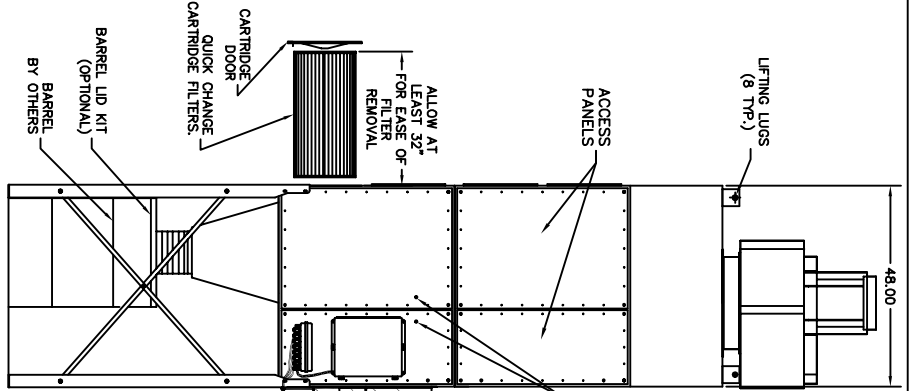
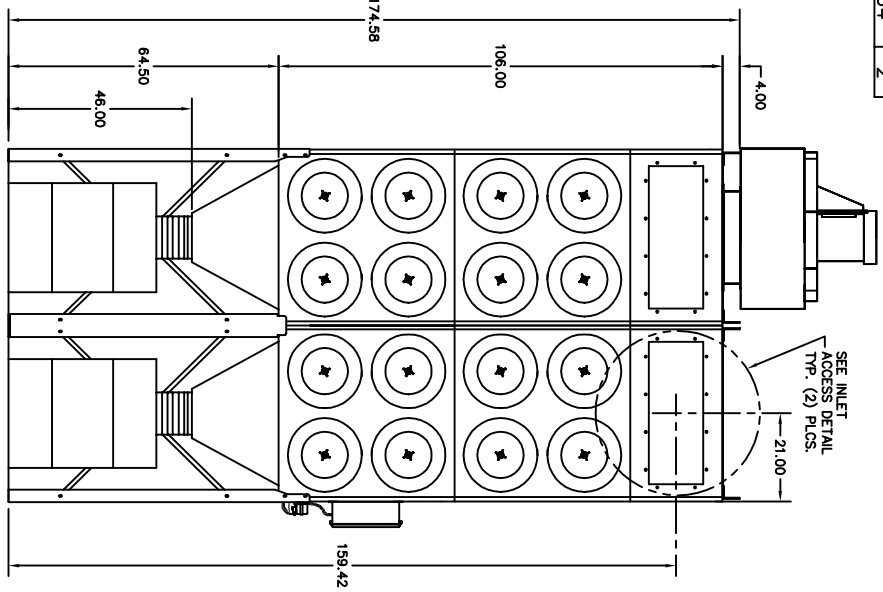
SPECIFICATIONS

TOTAL VALVES 9

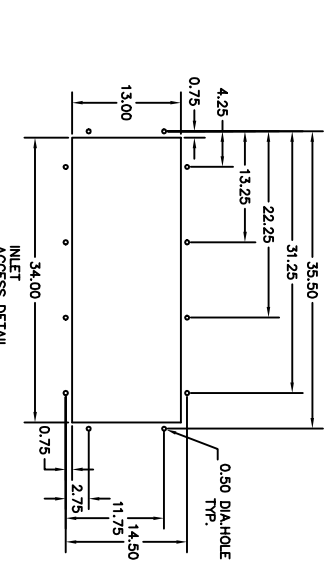
TOTAL CARTRIDGES 18

COMPRESSED AIR 1.0 SCF @90 psi per sec.

TITLE		TOLERANCES UNLESS NOTED	
RP6-3 BOLT TOGETHER WITH BLOWER DETAIL		3 DEC. PLACES	
DWG. NO. 1564		SCALE 1/2" = 1'-0"	
REV. 2		DATE 12-17-97	
BY J.D.		CHKD BY DMC	
NO. 2		SH. 2 OF 4	
DWG. NO. 1564		MATERIAL	



- NOTES**
- 1.) CONSULT MANUFACTURER REPRESENTATIVE FOR MOTOR BLOWER HEIGHT AND OTHER SPECIFICATIONS.
  - 2.) UNITS MUST BE ATTACHED TO IN-PLANT COMPRESSED AIR SUPPLY FOR CLEANING MECHANISM TO FUNCTION (90 MAX PSIG CLEAN DRY AIR)
  - 3.) VALVES AND CONTROL TIMER SYSTEM OPERATE ON 120V, 50-HZ, POWER.
  - 4.) WELDED STEEL CONSTRUCTION OF 12 GA. MILD STEEL.
  - 5.) SOLID STATE PULSE CONTROL TIMER IN NEMA 4 ENCLOSURE.
  - 6.) PAINTED INSIDE & OUT CRIMSON RED.
- SPECIFICATIONS**
- TOTAL VALVES: 8
- TOTAL CARTRIDGES: 16
- COMPRESSED AIR: 1.0 SCF @90 psi per sec.



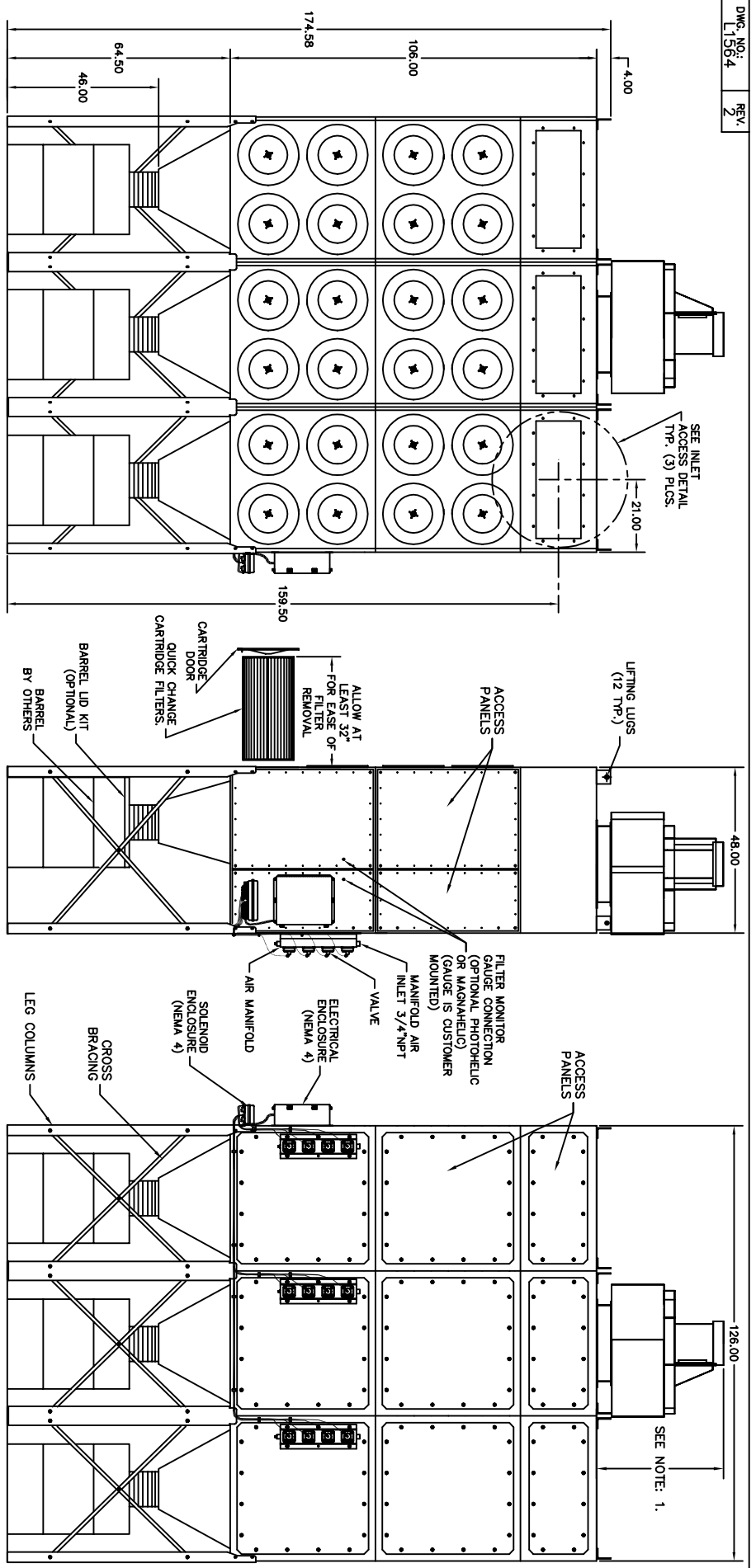
**TITLE**  
RP8-2 BOLT  
TOGETHER WITH  
BLOWER DETAIL

**TOLERANCES UNLESS  
OTHERWISE NOTED  
ON DRAWING**

3 DEC. PLACES: .001, .010, .020  
SCALE: 1/3"=1"  
DATE: 12-17-97  
DWG. NO: 1564

**METAL FAB**  
METAL FABRICATION, INC.  
NEW VENTNOR, NJ 07078

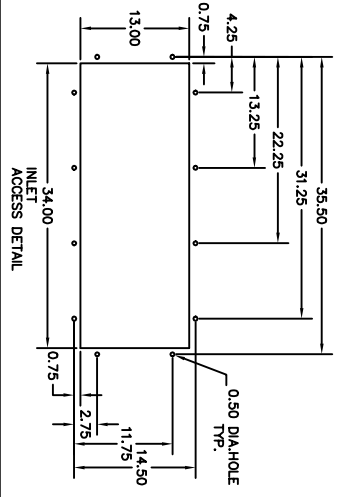
DATE: 12-17-97  
BY: JG  
CHKD BY: JG  
APP: 11  
SH. 3 OF 4  
REV: 2



- NOTES**
- 1.) CONSULT MANUFACTURER REPRESENTATIVE FOR MOTOR BLOWER HEIGHT AND OTHER SPECIFICATIONS.
  - 2.) UNITS MUST BE ATTACHED TO IN-PLANT COMPRESSED AIR SUPPLY FOR CLEANING MECHANISM TO FUNCTION (90 MAX PSIG CLEAN DRY AIR)
  - 3.) VALVES AND CONTROL TIMER SYSTEM OPERATE ON 120V, 50-HZ POWER.
  - 4.) WELDED STEEL CONSTRUCTION OF 12 GA. MILD STEEL.
  - 5.) SOLID STATE PULSE CONTROL TIMER IN NEMA 4 ENCLOSURE.
  - 6.) PAINTED INSIDE & OUT CRIMSON RED.

**SPECIFICATIONS**

TOTAL VALVES	12
TOTAL CARTRIDGES	24
COMPRESSED AIR	1.0 SCF @90 psi per sec.



<b>TITLE</b>		<b>TOLERANCES UNLESS NOTED</b>	
RP8-3 BOLT TOGETHER WITH BLOWER DETAIL		3 DEC. PLACE UNLESS NOTED	
DMC DWT 12-17-97 JJD		SCALE 1:3=10	
CROSS BRACING		SH. 4 OF 4	
LEG COLUMNS		DMC NO: 1564	

