



**BREATHE EASY...Solutions for Clean, Safe Air**

# OM6000

## Specifications and Technical Data

- ### TYPICAL APPLICATIONS:
- SOURCE CAPTURE OF:
- OIL / MACHINING MIST
  - WELD SMOKE AND FUMES
  - DRY DUSTS
  - ODORS AND VAPORS

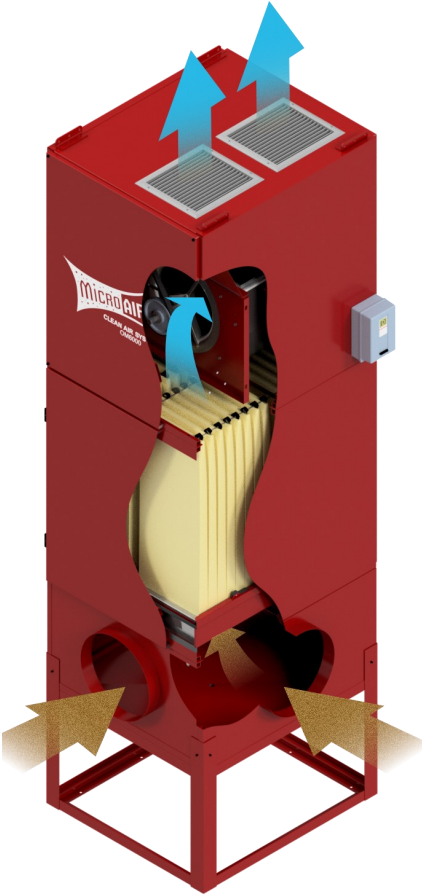


- ### STANDARD FEATURES:
- 6,000 CFM NOMINAL
  - UP TO FOUR-STAGE FILTRATION
  - SIDE LOAD, EASY FILTER ACCESS
  - CAM-LOCK POSITIVE FILTER SEALING
  - HEAVY DUTY BLOWER
  - POSITIVE SEALING CABINET

- ### OPTIONS:
- FLOOR STAND
  - CEILING MOUNT OPTION
  - HIGH EFFICIENCY MIST-X PREFILTER
  - HEPA AFTERFILTER
  - MOTOR STARTER AND OVERLOAD PROTECTION
  - START/STOP SWITCH

### HOW IT WORKS:

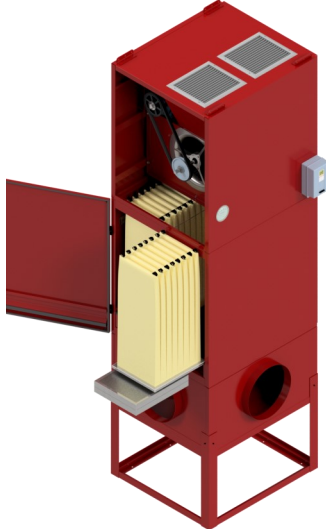
Mist laden air flows through the inlet or inlets into the bottom plenum. The air then turns 90 degrees and goes upward through the four baffle impingers and then the four aluminum mesh prefilters. These filters remove most of the oil. Finally, the air goes through the four 95% oil mist bags. These special filters remove any remaining mist and smoke. The filters are lined with a special media that facilitates draining of the oil back into the plenum. Clean air is then discharged at the top of the unit providing Breathe Easy Clean, Safe Air to the facility.. Oil drains out the bottom of the plenum.



### Optional High-Efficiency Mist-X Prefilter

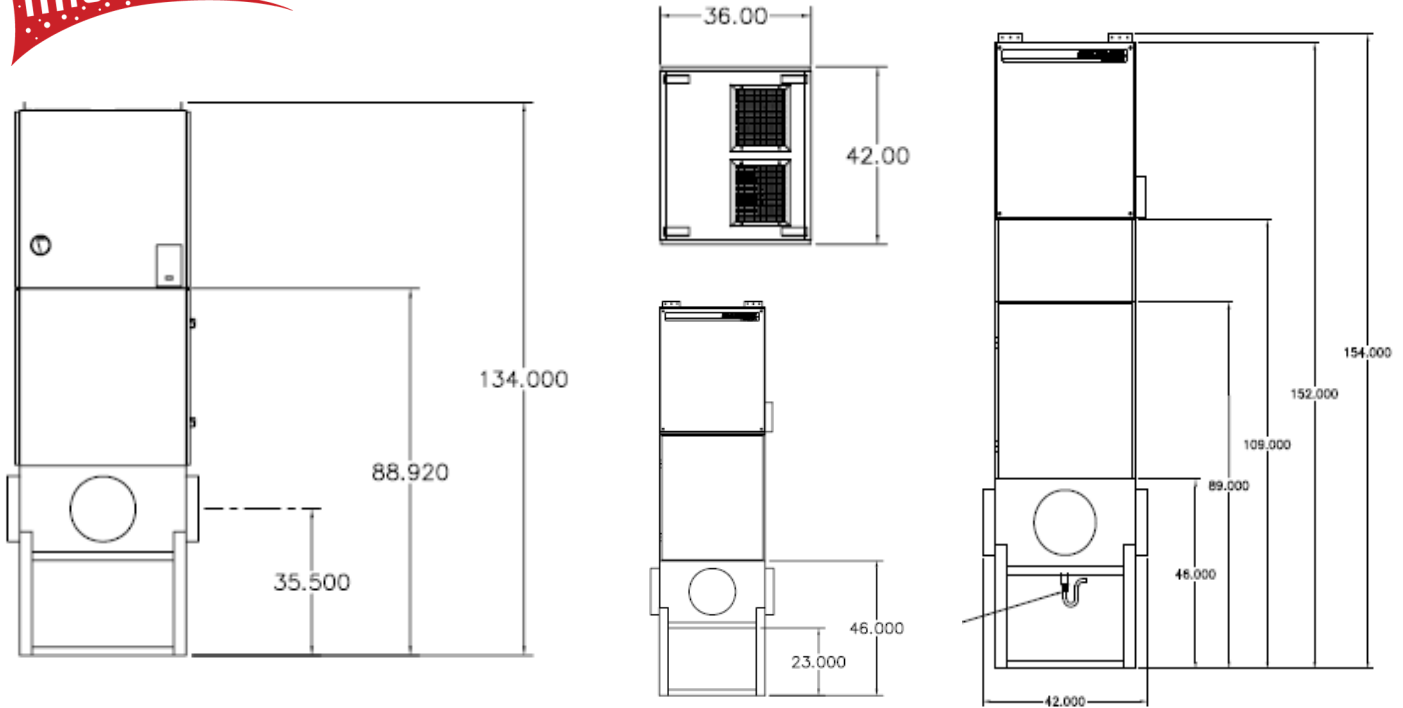
Micro Air's Mist-X pre-filter, constructed of multiple v-shaped pockets, positioned in an offset arrangement, creates a vortex, causing the oil and mist to impinge into the chevron pockets.

This vortex action causes oil mist and smoke particles to impinge on the walls of the filter where they are then removed from the air stream and drained from the filter into the sump.





# OM6000



**OM6000**

**OM6000 With HEPA AFTERFILTER**

## OM6000 SPECIFICATIONS:

**OVERALL DIMENSIONS:**

134" H X 36" W X 42" D WITH FLOOR STAND  
 154" H X 36" W X 42" D WITH FLOOR STAND AND HEPA AFTERFILTER

**WEIGHT:**

\*750 LBS ACTUAL WEIGHT  
 \*825 LBS SHIPPING WEIGHT  
 \*WEIGHT VARIES DEPENDING UPON OPTIONS SELECTED

**CABINET:**

HEAVY DUTY 14 GA. WELDED GALVANEAL STEEL W/EXTERIOR SURFACES GROUND SMOOTH

**FINISH:**

INDUSTRIAL GRADE TEXTURED BAKED  
 CRIMSON RED ENAMEL PAINT—INSIDE AND OUT

**PREFILTER OPTIONS:**

FOUR EA. 16" X 20" X 2" ALUMINUM MESH PREFILTER  
 FOUR EA. 16" X 20" X 2" BAFFLE TYPE OIL IMPINGER FILTERS  
 FOUR EA. 16" X 20" X 4" PLEATED PREFILTER  
 FOUR EA. 16" X 20" X 2" PLEATED PREFILTER  
 FOUR EA. 16" X 20" X 3" MIST-X (CHEVRON) PREFILTER  
 FOUR EA. 16" X 20" X 2" MAXI-GRID (PINK SCRIM) PREFILTER  
 FOUR EA. 16" X 20" X 1" ALUMINUM MESH PREFILTER

**PRIMARY FILTER OPTIONS:**

FOUR EA. 16" X 20" X 36" 55% BAG FILTER  
 FOUR EA. 16" X 20" X 36" 95% BAG FILTER  
 FOUR EA. 16" X 20" X 36" 95% OIL MIST BAG FILTER

**AFTERFILTER OPTIONS:**

18" X 30" X 12" 99.97% DOP HEPA FILTER

**FILTER ACCESS:**

SIDE LOAD THROUGH HINGED DOOR FOR EASY ACCESS

**CONTROLS:**

WIRING EXTENDED THROUGH CABINET FOR EASY HOOK-UP BY ELECTRICIAN ON ALL 3-PHASE UNITS.

**NOISE LEVEL:**

77dBA @ 5" FROM EXHAUST

**INLET / EXHAUST:**

INLET AT BOTTOM OF UNIT THROUGH INLET PLENUM / EXHAUST OUT TOP OF UNIT

**MOTOR :**

7 1/2 HP, 208-230.460V, 60 HZ, 3-PHASE, TEFC MOTOR

**BLOWER:**

BELT DRIVEN, 15-11 FORWARD INCLINED BLOWER

**DRIVE SYSTEM:**

LOW, MEDIUM, OR HIGH STATIC PULLEY COMBINATIONS ARE AVAILABLE. CONSULT FACTORY

**INPUT VOLTAGE OPTIONS:**

7 1/2 HP

**MAX CURRENT**

7 1/2 HP, 230.460V 18.6 / 9.4 AMP

**AIR VOLUME:**

UP TO 6,000 CFM NOMINAL , DEPENDENT ON OPTIONS SELECTED. CONSULT FACTORY

**FILTER CHANGE INDICATOR OPTIONS:**

0-5" MAGNEHELIC GAUGE STD.

**OIL DRAIN:**

1" NPT PIPE COUPLING (FEMALE)

**MOUNTING OPTIONS:**

HEAVY DUTY CEILING MOUNTING BRACKETS  
 FLOOR STAND  
 SPECIFICATIONS SUBJECT TO CHANGE WITHOUT NOTICE