



BREATHE EASY...Solutions for Clean, Safe Air

OM600DD

Specifications and Technical Data

- ### TYPICAL APPLICATIONS:
- SOURCE CAPTURE OF:
- OIL / COOLANT MIST
 - WELD SMOKE AND FUMES
 - DRY DUSTS
 - ODORS AND VAPORS

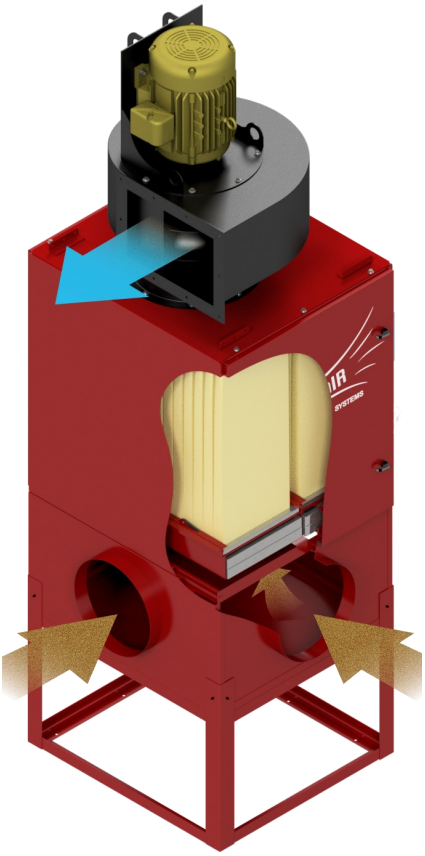


- ### STANDARD FEATURES:
- 6,000 CFM NOMINAL
 - HIGH CAPACITY—ALLOWS FOR MULTIPLE PICK-UPS
 - UP TO FOUR-STAGE FILTRATION
 - SIDE LOAD, EASY FILTER ACCESS
 - CAM-LOCK POSITIVE FILTER SEALING
 - HEAVY DUTY BLOWER
 - POSITIVE SEALING CABINET

- ### OPTIONS:
- FLOOR STAND
 - HIGH EFFICIENCY MIST-X PREFILTER
 - HEPA AFTERFILTER
 - 7 1/2, 10, OR 15 HP FAN OPTIONS
 - MOTOR STARTER AND OVERLOAD PROTECTION
 - START/STOP SWITCH
 - SILENCER

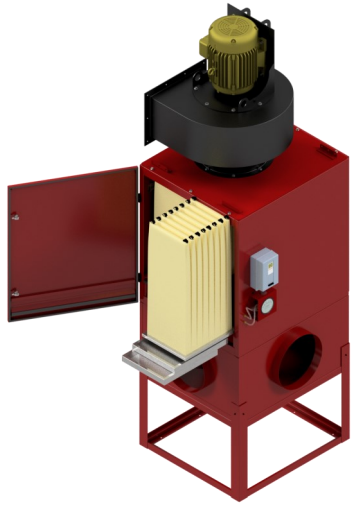
HOW IT WORKS:

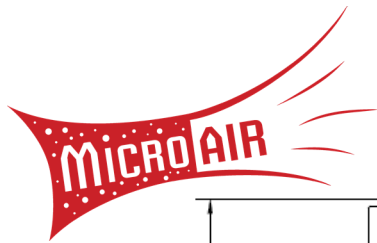
Mist laden air flows through the inlet or inlets into the bottom plenum. The air then turns 90 degrees and goes upward through the four baffle impingers and then the four aluminum mesh prefilters. These filters remove most of the oil. Finally, the air goes through the four 95% oil mist bags. These special filters remove any remaining mist and smoke. The filters are lined with a special media that facilitates draining of the oil back into the plenum. Clean air is then discharged at the top of the unit providing Breathe Easy Clean, Safe Air to the facility.. Oil drains out the bottom of the plenum.



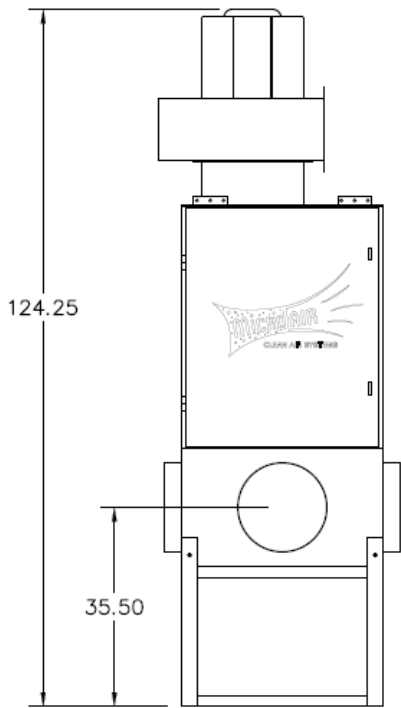
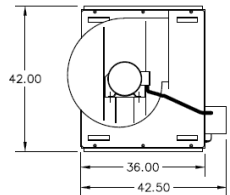
Optional High-Efficiency Mist-X Prefilter

Micro Air's Mist-X pre-filter, constructed of multiple v-shaped pockets, positioned in an offset arrangement, creates a vortex, causing the oil and mist to impinge into the chevron pockets. This vortex action causes oil mist and smoke particles to impinge on the walls of the filter where they are then removed from the air stream and drained from the filter into the sump.

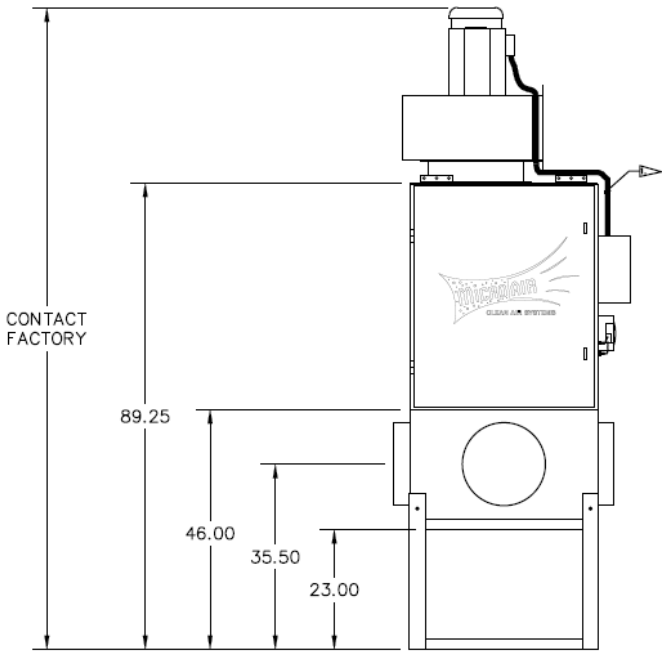




OM6000DD



OM6000DD—10 HP Blower—Floor Stand



OM6000DD

OM6000DD SPECIFICATIONS:

<p>OVERALL DIMENSIONS: *89" H X 36" W X 42" D WITH FLOOR STAND *111" H X 36" W X 42" D WITH FLOOR STAND AND HEPA AFTERFILTER *DIMENSIONS DO NOT INCLUDE FAN—CONSULT FACTORY</p> <p>WEIGHT: *750 LBS ACTUAL WEIGHT *825 LBS SHIPPING WEIGHT *WEIGHT VARIES DEPENDING UPON OPTIONS SELECTED</p> <p>CABINET: HEAVY DUTY 14 GA. WELDED GALVANEAL STEEL W/EXTERIOR SURFACES GROUND SMOOTH</p> <p>FINISH: INDUSTRIAL GRADE TEXTURED BAKED CRIMSON RED ENAMEL PAINT—INSIDE AND OUT</p> <p>PREFILTER OPTIONS: FOUR EA. 16" X 20" X 2" ALUMINUM MESH PREFILTER FOUR EA. 16" X 20" X 2" BAFFLE TYPE OIL IMPINGER FILTERS FOUR EA. 16" X 20" X 4" PLEATED PREFILTER FOUR EA. 16" X 20" X 2" PLEATED PREFILTER FOUR EA. 16" X 20" X 3" MIST-X (CHEVRON) PREFILTER FOUR EA. 16" X 20" X 2" MAXI-GRID (PINK SCRIM) PREFILTER FOUR EA. 16" X 20" X 1" ALUMINUM MESH PREFILTER</p> <p>PRIMARY FILTER OPTIONS: FOUR EA. 16" X 20" X 36" 55% BAG FILTER FOUR EA. 16" X 20" X 36" 95% BAG FILTER FOUR EA. 16" X 20" X 36" 95% OIL MIST BAG FILTER</p> <p>AFTERFILTER OPTIONS: 18" X 30" X 12" 99.97% DOP HEPA FILTER</p> <p>FILTER ACCESS: SIDE LOAD THROUGH HINGED DOOR FOR EASY ACCESS</p> <p>CONTROLS: MOTOR STARTER / OVERLOAD PROTECTION / START / STOP</p>	<p>INLET / EXHAUST: INLET AT BOTTOM OF UNIT THROUGH INLET PLENUM / EXHAUST OUT TOP OF UNIT</p> <p>MOTOR : SINGLE SPEED, 208-230/460V, 60 HZ, THREE PHASE, TEFC 7.5 HP, 10 HP, OR 15 HP STANDARD OPTIONS</p> <p>BLOWER: DIRECT DRIVE, HIGH STATIC, BACKWARD INCLINED PLUG FANS</p> <p>MAX CURRENT 7 1/2 HP, 230V / 460V - 19.0 / 9.5 AMP 10 HP, 230V / 460V—24.6 / 12.3 AMP 15 HP, 230V / 460V—35.0 / 17.5 AMP</p> <p>AIR VOLUME: UP TO 6,000 CFM NOMINAL , DEPENDENT ON OPTIONS SELECTED. CONSULT FACTORY</p> <p>FILTER CHANGE INDICATOR OPTIONS: 0-5" MAGNEHELIC GAUGE</p> <p>OIL DRAIN: 1" NPT PIPE COUPLING (FEMALE)</p> <p>MOUNTING OPTIONS: FLOOR STAND</p> <p>INLET PLENUM: THREE EA. 16" DIA. COLLARS W/2 EA 16" CAPS THREE EA. 16" DIA. COLLARS W/ 14" REDUCERS & CAPS (2) THREE EA. 16" DIA. COLLARS W/12" REDUCERS & CAPS (2) THREE EA. 16" DIA. COLLARS W/10" REDUCERS & CAPS (2)</p>
--	---

SPECIFICATIONS SUBJECT TO CHANGE WITHOUT NOTICE