



BREATHE EASY...Solutions for Clean, Safe Air

MICRO AIR RP8-2 DUST COLLECTOR

Specifications and Technical Data

TYPICAL APPLICATIONS:

- WELD SMOKE AND FUMES
- GRINDING / POLISHING DUST
- COMPOSITES DUSTS
- ABRASIVE BLAST DUSTS
- SMOKE/ FUMES FROM LASER/PLASMA CUTTING
- PHARMACEUTICAL / FOOD PROCESSES



HOW IT WORKS:

STANDARD FEATURES:

- REVOLUTIONARY ROTO-PULSE® FILTER CLEANING SYSTEMS
- TOP MOUNT OR REMOTE MOUNT FANS
- LARGE CAPACITY DUST DRAWER OR HOPPER
- HEAVY DUTY 12 GA. CONSTRUCTION
- RATED FOR INDOOR AND/OR OUTDOOR INSTALLATION
- AFTER-PULSE CLEANING CYCLE STANDARD
- FULL RANGE OF OPTIONS
- BEST INDUSTRY WARRANTY

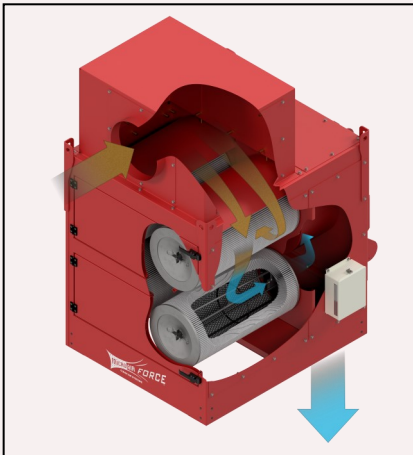
OPTIONS:

- HOPPER SETUP WITH LONG LEGS AND BARREL LID KIT. OR LOW PROFILE UNIT WITH DUST DRAWERS
- INLET PLENUM

OPTIONS (CONT.):

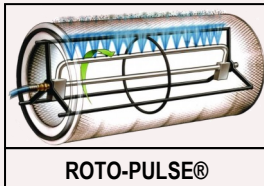
- SILENCER.
- HEPA AFTERFILTER.
- VARIETY OF CARTRIDGE FILTER OPTIONS.
- 10, 15, 20 OR 30 HP TOP MOUNT / REMOTE MOUNT FANS—OTHER OPTIONS AVAILABLE
- MAGNAHELIC OR PHOTOHELIC GAUGES.
- FULL ELECTRICAL CONTROL PACKAGE
- DROP-OUT MODULES FOR HEAVY PARTICULATE
- INTELLI-TOUCH® ENERGY SAVING CONTROLS
- EXPLOSION VENTS, BACKBLAST DAMPERS, OSHA/NFPA COMBUSTIBLE DUST COMPLIANCE PACKAGE
- SPARK ARRESTORS
- PAINT OPTIONS: BAKED ENAMEL OR EPOXY COAT INSIDE & OUT

Contaminated air is pulled into the inlet plenum at the top of the RP8-2 Cabinet, then travels down through the cartridge



filter section, where the contaminant is filtered and dropped into the hopper or dust drawer. Breathe Easy, clean safe air is exhausted out the bottom of the unit. Cartridge cleaning is accomplished with Micro Air's proprietary Roto-Pulse® cleaning system, where air is pulsed

into a specially designed stainless steel, rotating tube, engineered with pre-drilled holes. As the air enters this tube, the force of the pulse causes the tube to rotate incrementally inside the cartridge. While rotating, air



ROTO-PULSE®

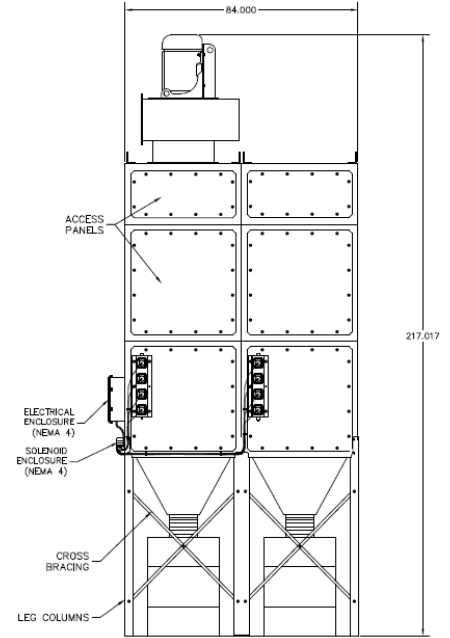
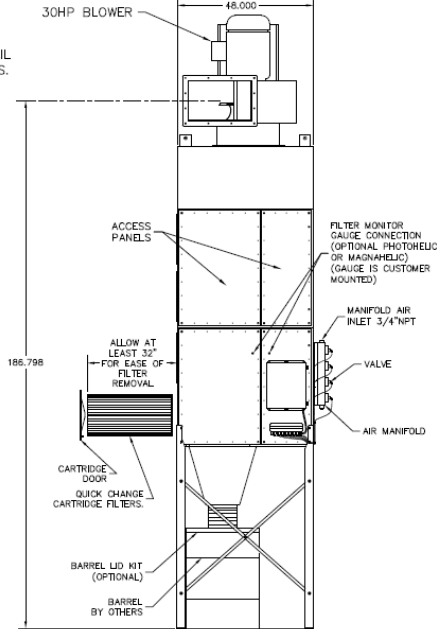
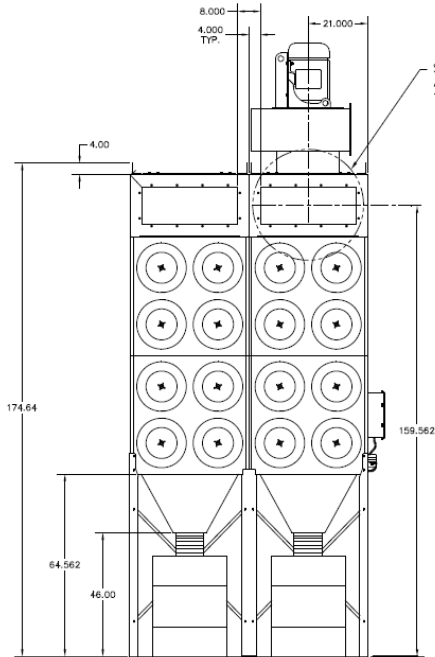
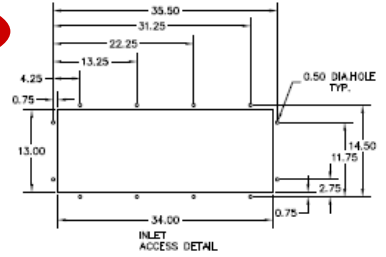
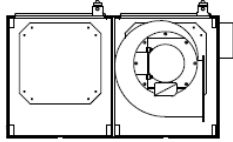


RP8-2 with Ducted to Multiple Weld Cells in Aluminum Mailbox Manufacturing Facility

exits the pre-drilled holes, resulting in air dispersment over the entire surface of the cartridge, providing for an improved cartridge cleaning cycle, compared to competitive backflush cleaning systems .



RP8-2



RP8-2 EQUIPPED WITH 30 HP TOP MOUNT FAN / LONG LEGS/HOPPER / INLET PLENUM

RP8-2 SPECIFICATIONS:

OVERALL DIMENSIONS:

175" H X 84" W X 49" D WITH LONG LEGS/HOPPER & INLET PLENUM
 126" H X 84" W X 49" D WITH SHORT LEGS/DUST TRAY & INLET PLENUM

WEIGHT:

*3,098 LBS ACTUAL WEIGHT
 *3,323 LBS SHIPPING WEIGHT
 *WEIGHT VARIES DEPENDING ON OPTIONS SELECTED

CABINET:

HEAVY DUTY 14 GAUGE GALVANEAL STEEL WITH EXTERIOR SURFACES GROUND SMOOTH

FINISH:

INDUSTRIAL GRADE CRIMSON RED, TEXTURED BAKED ENAMEL PAINT IN SIDE AND OUT. OPTIONAL EPOXY COAT INSIDE & OUT AVAILABLE

FILTER ACCESS:

EASY FRONT ACCESS THROUGH HINGED / LATCHED DOORS

FAN-MOTOR/BLOWER

VARIOUS SIZES AVAILABLE IN TOP MOUNT OR REMOTE MOUNT CONFIGURATION, SIZED PER APPLICATION SPECIFICATIONS (10,15, 20, OR 30 HP TOP MOUNT / REMOTE MOUNT FANS AVAILABLE AS STD. OPTION)
 OTHER CUSTOM OPTIONS AVAILABLE

AIR VOLUME:

DEPENDENT UPON OPTIONS SELECTED—CONSULT FAN CURVES FOR SPECIFICS

FILTER CHANGE INDICATOR:

MAGNEHELIC GAUGE OR PHOTOHELIC GAUGE

FILTRATION:

SIXTEEN EA. HIGH EFFICIENCY, 80/20 BLEND, FIRE-RETARDANT CARTRIDGE FILTERS, 250 SF MEDIA PER FILTER, 4,000 SF TOTAL MEDIA
 *MULTIPLE CARTRIDGE MEDIA OPTIONS AVAILABLE

CONTROLS:

SOLID STATE TIMER BOARD, FACTORY WIRED AND INSTALLED—FULL CONTROL PACKAGE AVAILABLE AS AN OPTION

INLET / EXHAUST:

TOP MOUNT OR REMOTE MOUNT INLET PLENUM
 EXHAUST - OUT BOTTOM OF UNIT

MAX CURRENT

10 HP, 230/460V—24.6 / 12.3 AMP
 15HP, 230/460V— 35.0 / 17.5 AMP
 20 HP, 230/460V—47.0 / 23.5 AMP
 30 HP, 230/460V—69.0 / 34.5 AMP

NOISE LEVELS:

DEPENDENT UPON OPTIONS SELECTED—CONSULT FACTORY

WIND LOAD RATING:

100 MPH

CABINET PRESSURE RATING:

+/- 20 INCHES WC

COLLECTION OPTIONS:

HOPPERS WITH 10" DIA COLLAR OR DUST TRAYS

COMPRESSED AIR:

REQUIRES 80—90 PSI CLEAN, DRY AIR & MINIMUM 3/4" AIR LINE

CARTRIDGE CLEANING SYSTEM:

ROTO-PULSE® INCREMENTAL ROTATING TUBE WITH PRE-DRILLED HOLES. AS AIR IS PULSED INTO THE TUBE, IT ROTATES AND AIR EXITS THE PRE-DRILLED HOLES, PROVIDING A HIGHLY EFFICIENT AND TOTAL CLEANING OF THE CARTRIDGE FILTER

OFF-LINE CARTRIDGE CLEANING:

STANDARD EQUIPMENT DESIGNED TO CLEAN FILTERS AFTER UNIT IS TURNED OFF FOR OPTIMAL OFF-LINE CARTRIDGE CLEANING. TIMER CAN BE ADJUSTED BETWEEN 0 AND 17 MINUTES

SPECIFICATIONS SUBJECT TO CHANGE WITHOUT NOTICE