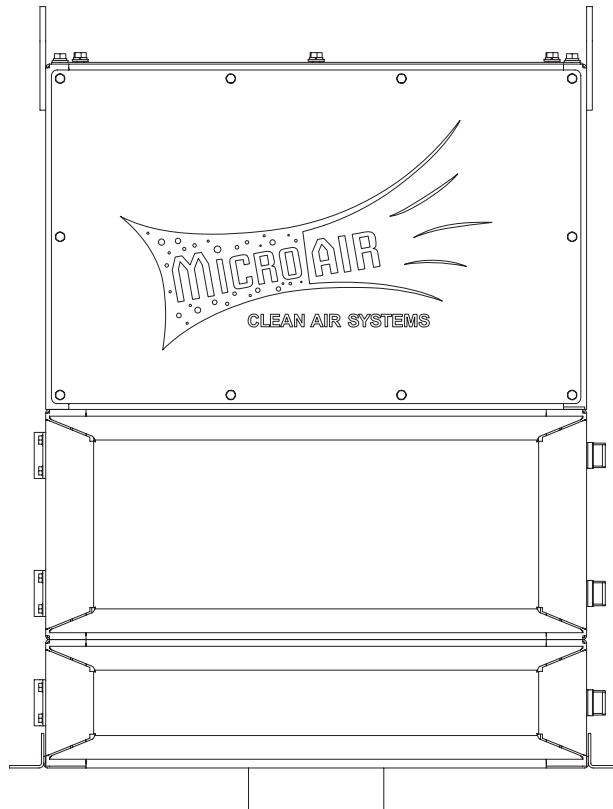




# MIST<sup>TM</sup> MODEL MM600

Installation and Operation Manual



## **Important:**

This manual contains specific cautionary statements relative to worker safety. Read this manual thoroughly and follow as directed. It is impossible to list all the hazards of oil mist control equipment. All persons involved with the equipment or systems should be instructed how to operate in a safe manner.

## MODEL MM600 SPECIFICATIONS

### INPUT VOLTAGE:

208-230V / 460V 60Hz 3 Phase

### MAXIMUM CURRENT:

2HP 208V: 5.8 Amps  
230V: 5.6 Amps  
460V: 2.8 Amps

### MOTOR:

2HP 3 Phase 3450 RPM TEFC

### OVERALL DIMENSIONS:

Base Unit: 30.5" H x 23.5" W x 24" D

### FILTER AREA:

50 Sq. Feet

### PACKAGE CONTENTS:

1 Ea. MM600  
1 Ea. Owners Manual  
1 Ea. Motor Control Box  
1 Ea. P2221 0-5" Minihelic  
1 Ea. P7297 0-10" Minihelic  
1 Ea. Gauge Mounting Bracket  
40 Ft. P2806 Tubing  
4 Ea. P1050 Gromet

### INSPECTION:

The Micro Air oil mist unit is shipped on one skid. This skid should be inspected for any visible damage that may have occurred during shipment. Note any damage on the packing slip.

1. Uncrate the air cleaner. Use caution not to damage the paint while dismantling the crate.
2. Remove any options ordered from the skid.
3. Using a forklift and lifting chains or straps, lift the air cleaner off the skid. Note: Do not set the air cleaner on the inlet collar, this may damage the collar.

### HANGING MOUNT INSTRUCTIONS:

Determine the location where the air cleaner is to be installed. Be sure to allow sufficient room around the air cleaner to service the filters, and allow for exhaust air.

1. Carefully place the air cleaner into it's location.
2. Use strong braided wire or chain to attach the air cleaner at the provided hanging brackets to structural supports (Fig 1).

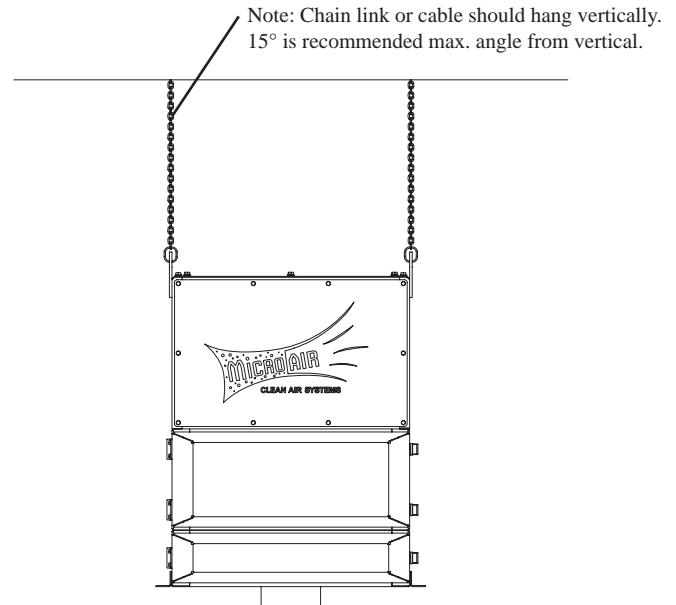


Figure 1

### DIRECT MOUNT INSTRUCTIONS:

Determine the location where the air cleaner is to be installed. Be sure to allow sufficient room around the air cleaner to service the filter, and allow for exhaust air.

1. Bolt the air cleaner to the machine in it's final location using the provided holes in the flanges of the air cleaner (Fig 2).

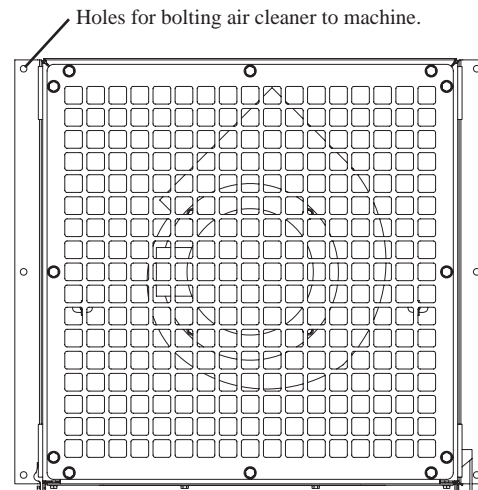


Figure 2

**ELECTRICAL INSTALLATION:**

**⚠ All Electrical work must be done by a qualified electrician according to local, state and national codes.**

**⚠ CAUTION: Installation can cause exposure to live components. Disconnect electrical power before proceeding with installation. Proper lockout/tag out procedures should be used.**

1. Determine the location for the Motor Control Box.
2. Make electrical connections as shown in the wiring diagram to the wires protruding from the conduit on the side of the air cleaner.
3. Connect supply power to the Motor Control Box as shown in the wiring diagram (pg #4).
4. Check blower for proper rotation direction. If the blower rotates backwards, interchange two of the motor supply connections (L1 and L2).
5. Check current draw of motor. Do not exceed specified amprage (pg #2).

**GAUGE INSTALLATION:**

1. Mount the gauges in the gauge bracket (Fig 3).
2. Drill 3/8" dia. holes in the cabinet (Fig. 4) and insert P1050 gromet.
3. Connect P2806 tubing from the hole labeled "A" (Fig 4) to the port labeled "LOW" on the 0-5" minihelic.
4. Connect P2806 tubing from the hole labeled "B" (Fig 4) to the port labeled "HI" on the 0-5" minihelic.
5. Connect P2806 tubing from the hole labeled "C" (Fig 4) to the port labeled "LOW" on the 0-10" minihelic.
6. Connect P2806 tubing from the hole labeled "D" (Fig 4) to the port labeled "HI" on the 0-10" minihelic.

**OPERATION:**

1. To start air cleaner, turn the knob to the position labeled "ON". To stop the unit turn the knob to the position labeled "OFF".

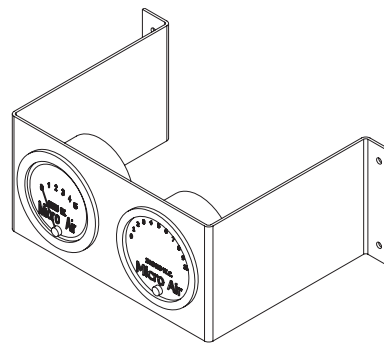


Figure 3

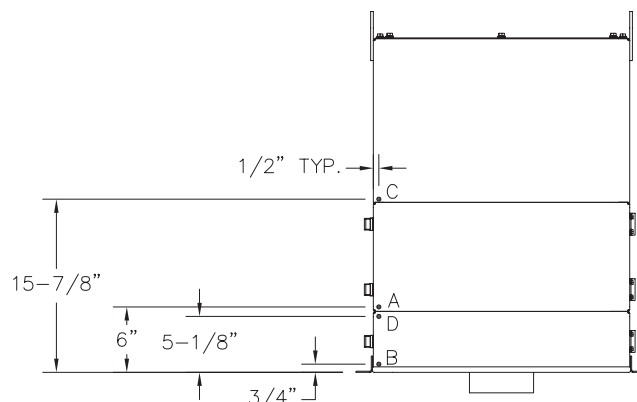


Figure 4

**GENERAL MAINTENANCE:**

1. No lubrication is required for the motor because it is a permanent pre-lube design. Excessive dirt / oil should be periodically removed.

**CHANGING FILTERS:**

**⚠ CAUTION: Always turn the air cleaner off before changing filters.**

1. The MM600 is equipped with dual filter gauges (0-5" for pre-filter and 0-10" for main filters). The pre-filter should be removed, cleaned and inspected when the gauge labeled pre-filter reads 2" W.C. The main filter should be removed and replaced when the gauge labeled main filter reads between 6" W.C. and 8" W.C. (depending on desired air flow).
2. The pre-filters should be cleaned in a detergent solution to remove dirt and oil residue.
3. Rinse the pre-filters thoroughly with water, shake dry and replace in the unit.
4. Re-start the air cleaner.

# MM600

INPUT VOLTAGE (3 PH)

- 208–230 VAC.  
 460 VAC.  
 OTHER: \_\_\_\_\_ VAC.

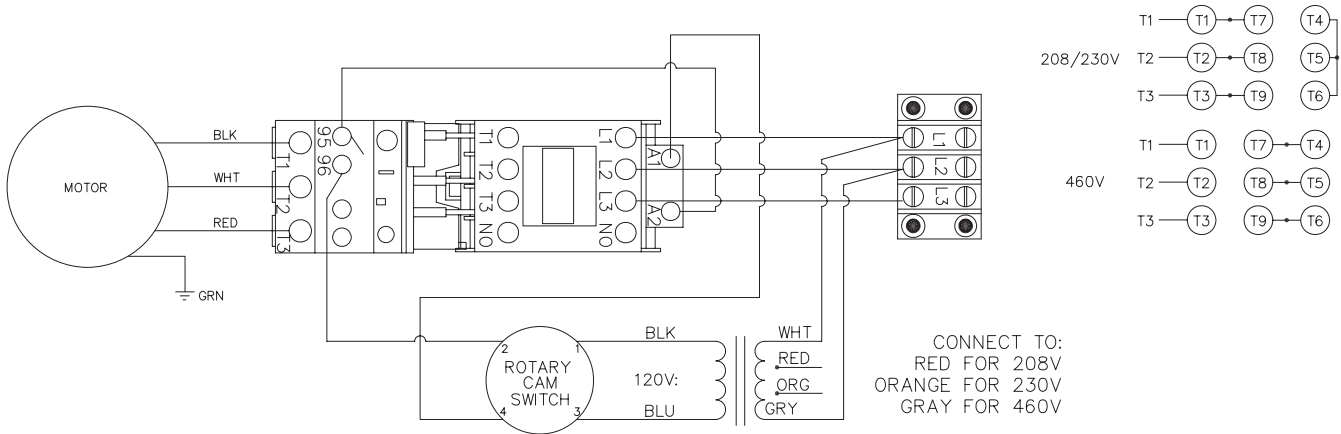
FREQUENCY

- 60 HZ.

MAXIMUM CURRENT

\_\_\_\_\_ AMPS

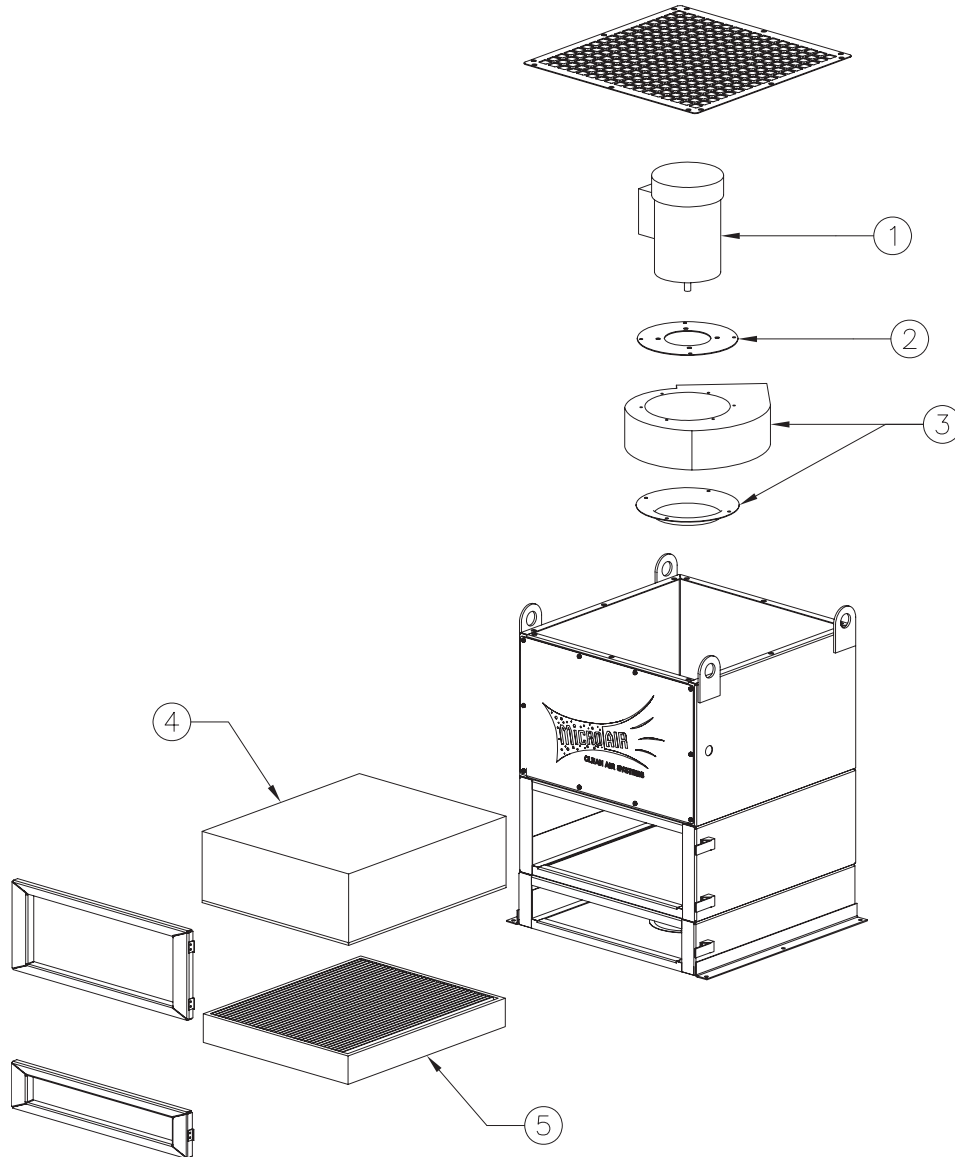
CAUTION: DISCONNECT POWER TO UNIT PRIOR TO SERVICING OR INSTALLATION OF PARTS.



METAL-FAB INC, WICHITA KS.

P7320-1

**208/230/460 Volt Wiring Diagram**



**MM600 PARTS LIST**

ITEM	PART NO.	DESCRIPTION
①	P2320	2 HP Motor
②	38785-03	Motor Mounting Plate
③	P2302	Blower Wheel, Housing and Inlet Plate
④	P7321	Square Mist Max Filter
⑤	P7292 / P1828 & P7309	Mist-X Pre-Filter / Baffle & Mesh Pre-Filter
Not Shown	P2221	0-5" W.C. Mini-Helic Gauge
Not Shown	P7297	0-10" W.C. Mini-Helic Gauge
Not Shown	P7322	99.97% Optional Hepa Filter