



**Clean. Easy. RED.**

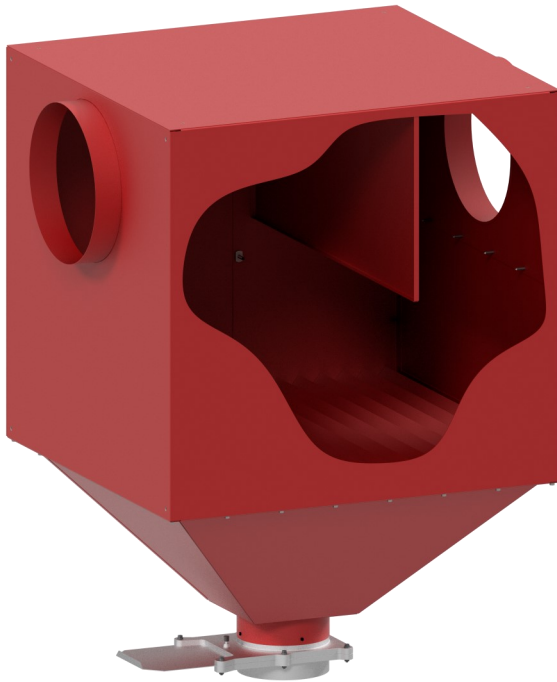
# Model SA Spark Arrestor

Specifications and Technical Data

### Typical Applications:

- Welding
- Plasma
- Metalizing
- Spark Producing Operations

Protect your equipment, reduce the chance of fires and protect your employees by installing a Micro Air Spark Arrestor in your dust collection system. It can be mounted in the ductwork or attached to either side of the dust collector.



- 12 Gauge Galvanealed Steel Construction
- Horizontal and Vertical Configurations
- Different Sizes Available
- Low Static Drop
- High Efficiency
- No Moving Parts
- Wall, Ceiling, or Dust Collector Mount
- Easy Clean Outs
- 2000 Cfm and 4000 Cfm Capacity Models

## SA4000 Specifications

Airflow	4,000 Cfm MAX
Envelope	54" L X 34" W X 50" H
Slide Gate Size	8"
Inlet / Outlet Size	14" Standard
Weight	225 lbs.
Reducers Available	12"

## SA2000 Specifications

Airflow	2,000 Cfm MAX
Envelope	36" L X 24" W X 50" H
Slide Gate Size	8"
Inlet / Outlet Size	10" Standard
Weight	150 lbs.
Reducers Available	8", 6"

*Sold and Serviced by:*

L2803-01/15