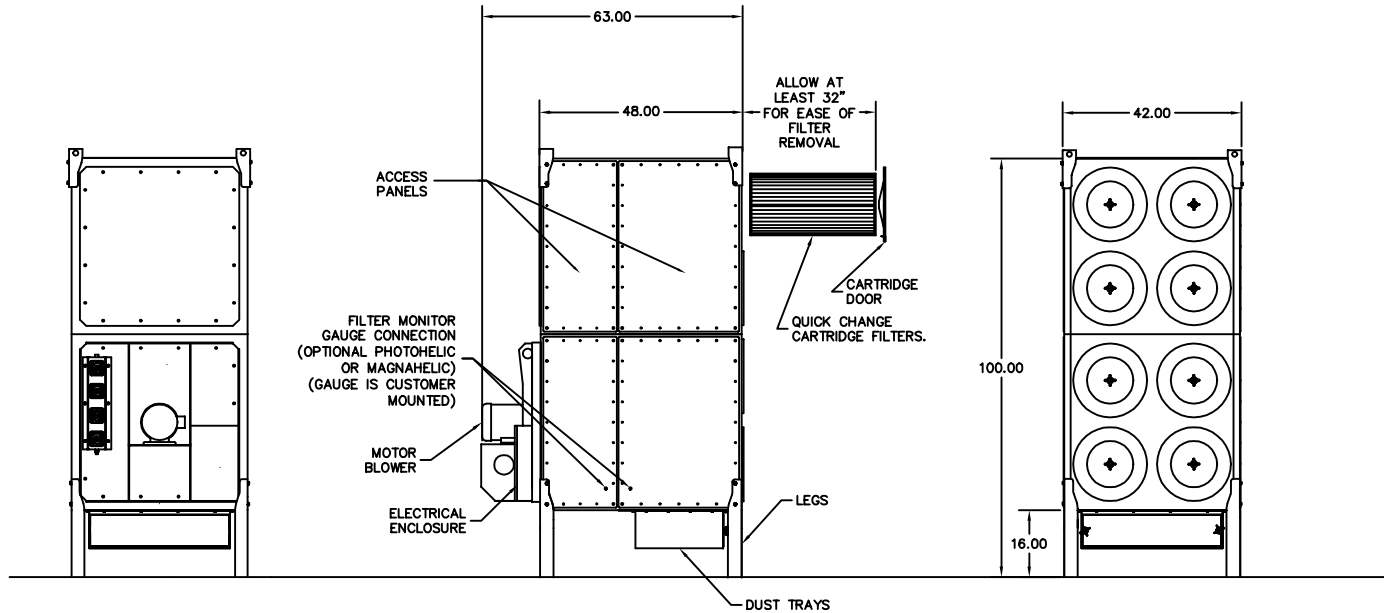


DWG. NO:  
L1576

REV.  
1

REVISIONS



**NOTES**

- 1.) UNITS MUST BE ATTACHED TO IN-PLANT COMPRESSED AIR SUPPLY FOR CLEANING MECHANISM TO FUNCTION (90 MAX psig CLEAN DRY AIR)
- 2.) WELDED STEEL CONSTRUCTION OF 12 Ga. MILD STEEL.
- 3.) FINISH: INDUSTRIAL GRADE CRIMSON RED INSIDE & OUT.
- 4.) DUST TRAY CAPACITY: 2.0 CUBIC FT.
- 5.) INLET PLENUM NOT SHOWN (OPTIONAL) ADDS 22" TO HEIGHT.

**SPECIFICATIONS**

TOTAL VALVES. 4  
TOTAL CARTRIDGES. 8  
COMPRESSED AIR, 1.0 SCF @90 PSI PER SEC.

TITLE LOW PROFILE OPTION FOR RP8		TOLERANCES UNLESS OTHERWISE NOTED 2 DEC. PLACES $\pm$ .01 3 DEC. PLACES $\pm$ .001 ANGLES $\pm$ 1°		 METAL FAB INDUSTRIAL FABRICATORS FOR ENVIRONMENTAL PROTECTION WICHITA, KS 67201		
SCALE NTS	UL DWG --	DWG. NO. L1576	REV. 1			
DWN BY: MC	DATE: 12-23-97	CHKD BY: JJ	DWG. NO. 11	SH. 3 OF 3	DWG. NO. L1576	REV. 1