



# MODEL SC150

Installation and Operation Manual



## **Important:**

This manual contains specific cautionary statements relative to worker safety. Read this manual thoroughly and follow as directed. It is impossible to list all the hazards of dust control equipment. All persons involved with the equipment or systems should be instructed how to operate in a safe manner.

**MODEL SC150 SPECIFICATIONS**

**INPUT VOLTAGE:**

120V 60Hz 1 Phase  
220V 60Hz 1 Phase

**MAX. CURRENT:**

2.4 Amps (at 120V)  
1.2 Amps (at 220V)

**CFM:**

Dual Arm Unit: 200  
Single Arm Unit: 150

**Sound:**

Exhaust: 63 dBA  
Inlet: 58 dBA  
Measured at 6'

**DIMENSIONS:** 11-1/4" h. X 14-3/8" w. X 27" l.

**ACTUAL WEIGHT:**

45-1/2 lbs. Single Arm  
47 lbs. Dual Arm

**PRE-OPERATING INSTRUCTIONS:**

**NOTE:** The SC150 is shipped in two cartons. Carton one contains the main unit with instructions. Carton two contains the arm(s) assembly.

1. Upon receipt, remove the units from cartons. Inspect for any freight damage that may have occurred during shipping. Report any damage to the freight company.
2. Remove filter access door by removing the two phillips head screws as shown. Grasp the underside of the door offset and lift slightly to remove (Fig. 1).

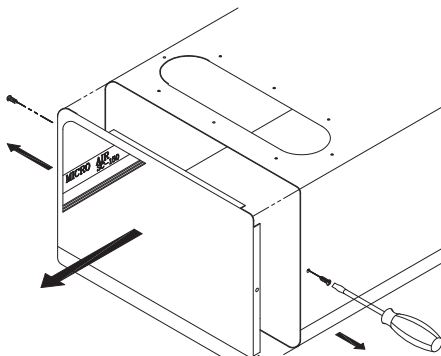


Fig. 1

3. Looking inside the unit, remove the two (2) filter spring retainers and pull out the foam prefilter, HEPA filter and charcoal/purasorb filter. REMOVE THE PLASTIC WRAP THAT PROTECTS THE CHARCOAL/PURASORB FILTER DURING STORAGE.

4. Remove the arm assembly from the second carton consisting of one or two flexible hoses and a black formed plastic manifold. Taped to the underside of the manifold is a clear bag containing four (4) black screws. Remove screws and discard the bag.
5. Place the plastic manifold upon the large oval hole on the SC150 cabinet, align the four pre-drilled holes on the manifold to those on the cabinet.
6. Using a slot head screw driver, secure the plastic manifold and hose assembly to the cabinet where the four (4) self tapping black screws obtained from step four (Fig. 2).

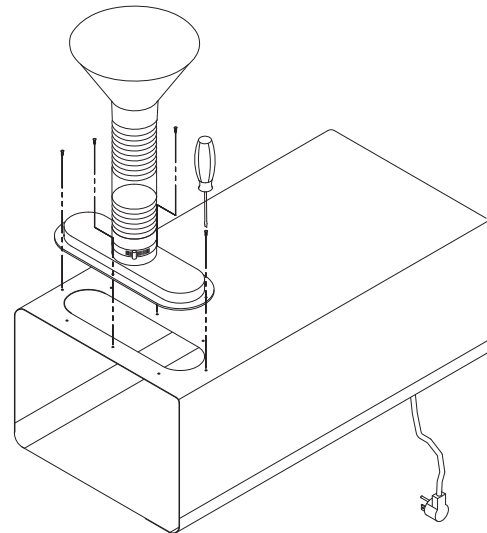


Fig. 2

7. Re-install filters removed in step two and secure with filter spring retainer. **NOTE:** filters should be pressed firmly into unit for positive seal resulting in no filter bypass. Replace the filter access door.

**OPERATION:**

1. Before operating, simply plug the SC150 power cord into any grounded electrical outlet rated at nameplate voltage.
2. Once the SC150 has been plugged in, turn the unit on. Position inlet nozzle(s) approximately 6" from point of containment to be captured.

**IMPORTANT: TAKE CARE TO SEE THAT THE INLET NOZZLE(S) DO NOT TOUCH HOT SURFACES SUCH AS SOLDERING IRONS, WHICH WOULD RESULT IN THE DEFORMATION OF THE PLASTIC NOZZLE.**

3. The SC150 has a fan-cooled, thermally protected motor, and is designed to operate for continuous duty if required.

NOTE: After some time, the flexible hose may not hold in a horizontal position. This can be fixed by twisting the hose counterclockwise thereby tightening the segmented joints.

## OPTIONAL INSTALLATION:

### A. Table Bracket Mounting (Fig. 3)

This option is designed when the customer wishes to place the unit on the floor and clamp the hose to a bracket on the table. This clears space for the worker.

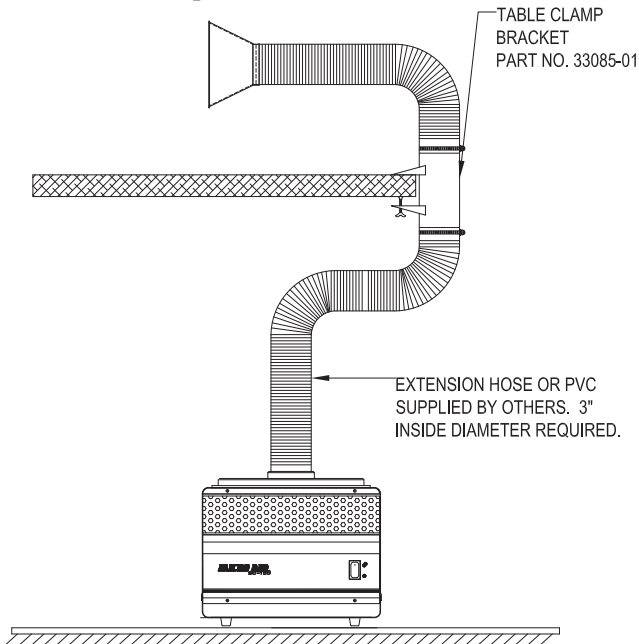


Fig. 3

### B. Vertical Wall Mount Assembly (Fig. 4)

This installation allows the SC150 to be mounted on a wall in a vertical position. The exhaust is then pointed upward, and the arm(s) are at the bottom end, close to the work area.

The kit contains:

- 1 each: Wall bracket
- 1 each: Unit bracket
- 3 each: #10 x 1-1/4" hex screw

1. Remove the two plastic feet near the air exhaust end of the SC150 using a phillips head screw driver. Retain the screws.
2. Attach the unit bracket to the bottom of the SC150 using screws that originally secured plastic feet (Fig. 5).
3. After location of the wall mount has been decided, install the SC150 wall bracket supplied in this kit by mounting to the wall using the 3 #10 hex crews provided. Noter that source capture arm is 34" long and should be located within easy reach of work area.

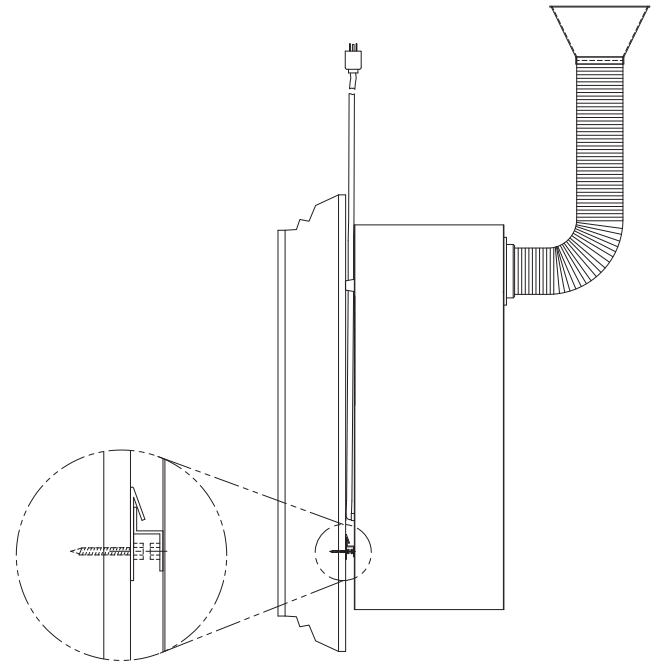


Fig. 4

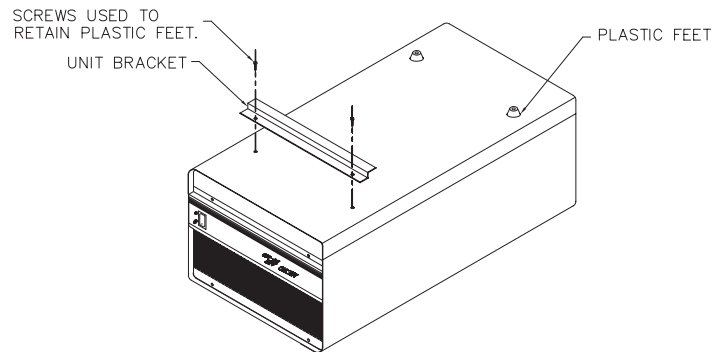


Fig. 5

**CAUTION: WHEN MOUNTING THE WALL BRACKET TO THE WALLBOARD, BE CERTAIN THAT SCREWS ARE SECURED TO A WALL BOARD VIA WALL JOISTS, OR BY MEANS OF A THREADED INSERT. WALL BOARD MATERIAL IS NOT INTEDNED TO SOELEY HOLD WEIGHT OF THE AIR CLEANER.**

4. Once the wall bracket and unit bracket are in place, lift the SC150 and mount to the wall bracket (Fig. 4).

### B. Horizontal Wall Mount Assembly (Fig. 6)

The kit contains:

- 2 each: Wall brackets
- 4 each: #10 x 1-1/4" hex screws
- 1 each: #8 x 1/2" self tapping screw
- 1 each: Cord clamp

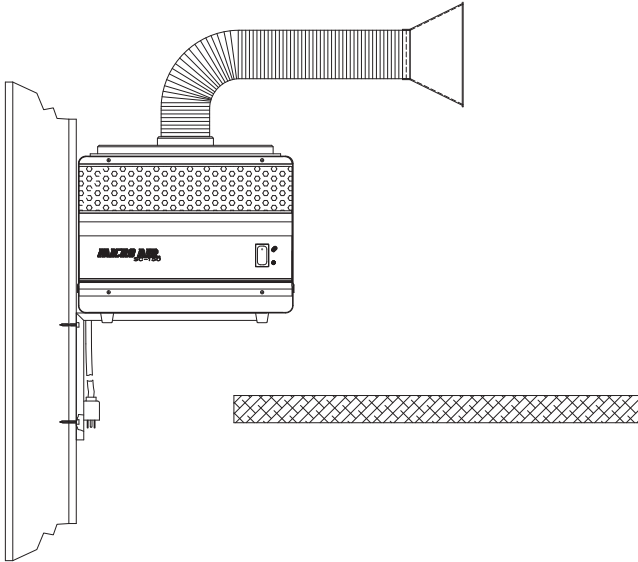


Fig. 6

1. After the location of wall mount brackets has been decided, install the two (2) mount brackets to the wall using the #10 hex screws provided. Locate brackets 16" apart.  
**CAUTION: WHEN MOUNTING THE WALL BRACKET TO THE WALLBOARD, BE CERTAIN THAT SCREWS ARE SECURED TO A WALL BOARD VIA WALL JOISTS, OR BY MEANS OF A THREADED INSERT. WALL BOARD MATERIAL IS NOT INTEDNED TO SOELEY HOLD WEIGHT OF THE AIR CLEANER.**
2. Set the SC150 upon wall brackets as shown, making sure that brackets are located between plastic feet.
3. Once the SC150 is in position as shown, secure the unit to the wall brackets using the #8 sheet metal screws supplied.

### MAINTENANCE:

1. Normally the HEPA and Charcoal/purasorb filter will be maintenance free with an average life of about 6 months. A good indicator for HEPA filter replacement is when air flow is noticeably less than normal and the unit has difficulty capturing contaminant.

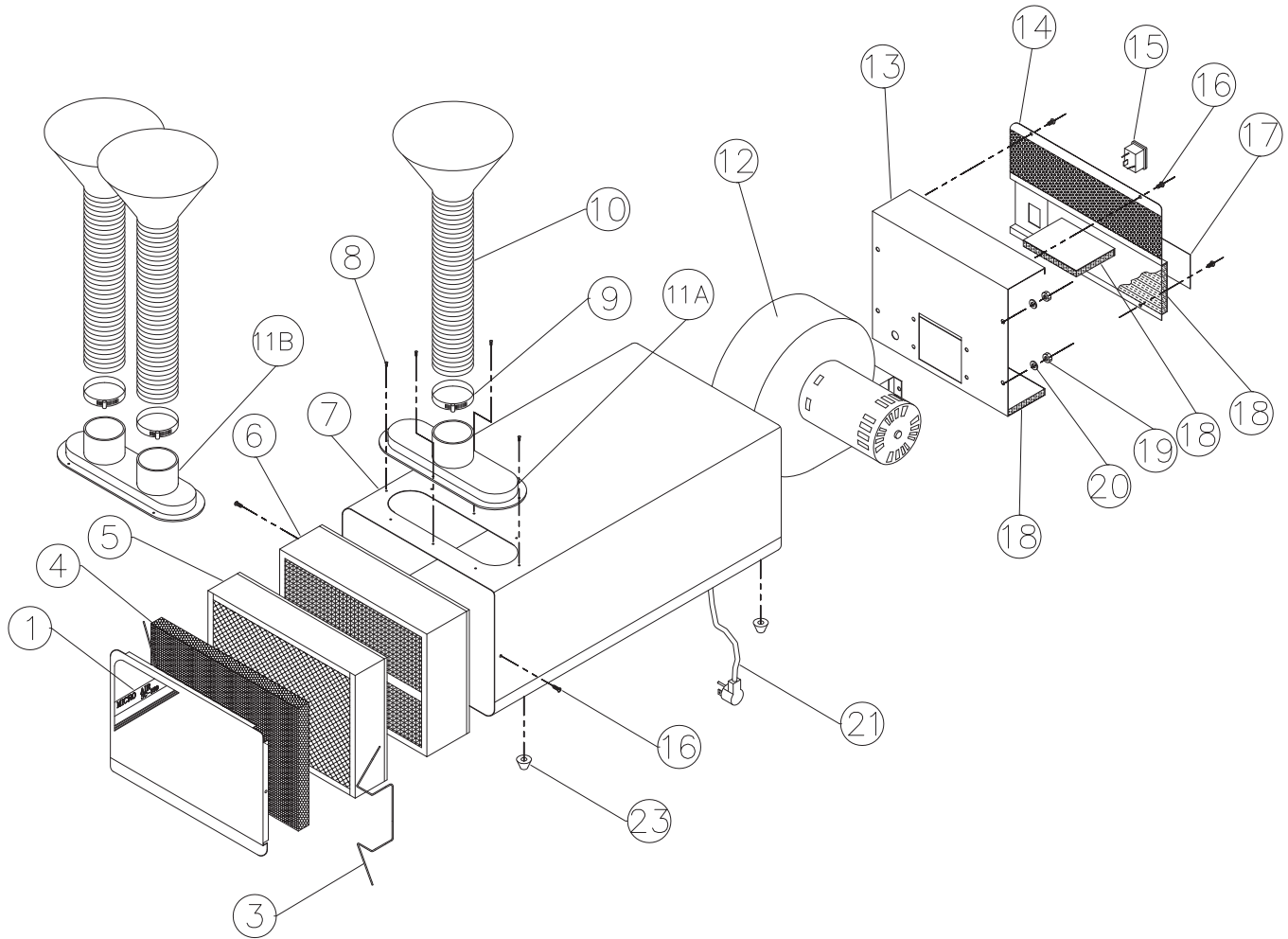
### FILTER REPLACEMENT:

**CAUTION: TURN OFF UNIT AND UNPLUG BEFORE SERVICING.**

1. Remove the filter access door.
2. Remvoe filter spring retainers and pull out foam mesh prefilter. Wash prefilter in a midl detergent. Rinse thoroughly and press excess water from filter using a towel or cloth.

3. When cleaning the prefilter, inspect the HEPA filter. If necessary, replace with a new filter.
4. After approximately 6 months use, the cahrccoal/purasorb filter will need to be replaced. Remove the filter by grasping the tabs attached to each side of the filter and pull out from unit.
5. Whenever servicing filters, remember to press filter spring retainers back into prefilter so that gasket of charcoal/purasorb filter is sealed against the cabinet flange. This will insure total seal against filter to eliminate contaminated air bypass.

**SC150 PARTS LIST**



ITEM	PART NO.	DESCRIPTION
1.	33057-01	End Cap
2.	P1997	Logo
3.	33084-01	Filter Spring Retainer
4.	P1990	1" Foam Pre-Filter
5.	P1991	3" 95% ASHRAE Filter
6.	P1992	3-3/4" Charcoal/Purasorb Filter
7.	33051-01	Cabinet Weldment
8.	P131B	Manifold Screw
9.	P1995	Hose Clamp
10.	P2000	Arm Assembly
11a.	P1986	Manifold (Single Arm)
11b.	P1987	Manifold (Dual Arm)
12a.	39032-01	Motor/blower (120V)
12b.	39032-02	Motor/blower (220V)
13.	33063-01	Blower Mount Weldment
14.	33065-01	Exhaust Grille Weldment
15.	P1296	Switch

ITEM	PART NO.	DESCRIPTION
16.	P1993	Black Phillips Screw
17.	P1998	Decal
18.	P719	Acoustical Foam
19.	P169	Lock Nut
20.	P252	Flat Washer
21.	P443	Cord Set
N/S	P1897	Strain Relief
23.	P380	Plastic Feet

**LISTED OPTIONS**

33076-01	Vertical Wall Bracket Kit
33086-01	Horizontal Wall Bracket Kit
33085-01	Table Clamp Kit
P2183	6" Charcoal/Purasorb Filter
33091-00	Refillable Charcoal Module
P2011	6" 95% DOP Filter
P3388	6" 99.97% HEPA Filter

**Serial Number:**

**Supply Voltage:**

**Date Installed:**

**Installed By:**

**Notes:**