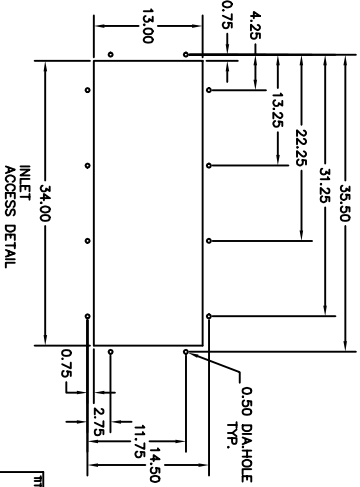
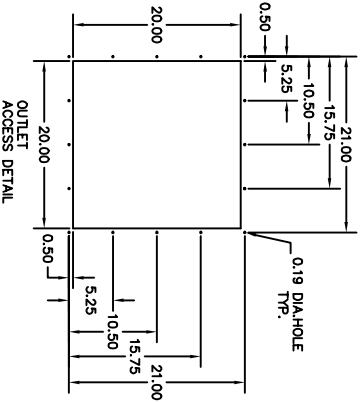


- NOTES**
- 1.) UNITS MUST BE ATTACHED TO IN-PLANT COMPRESSED AIR SUPPLY FOR CLEANING MECHANISM TO FUNCTION (90 MAX PSIG CLEAN DRY AIR)
  - 2.) VALVES AND CONTROL TIMER SYSTEM OPERATE ON 120V, 50-Hz. POWER.
  - 3.) WELDED STEEL CONSTRUCTION OF 12 GA. MILD STEEL.
  - 4.) SOLID STATE PULSE CONTROL TIMER IN NEMA 4 ENCLOSURE
  - 5.) PAINTED INSIDE & OUT CRIMSON RED.
- SPECIFICATIONS**
- TOTAL CARTRIDGES 6  
TOTAL CARTRIDGES 12  
COMPRESSED AIR 1.0 SCF @90 psi per sec.



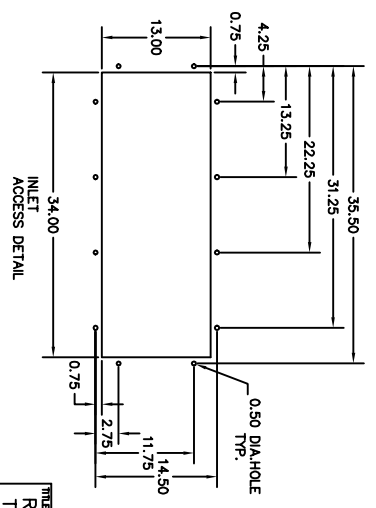
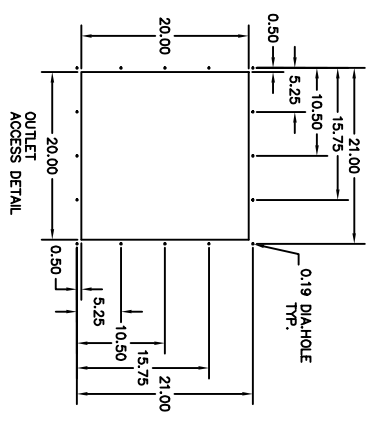
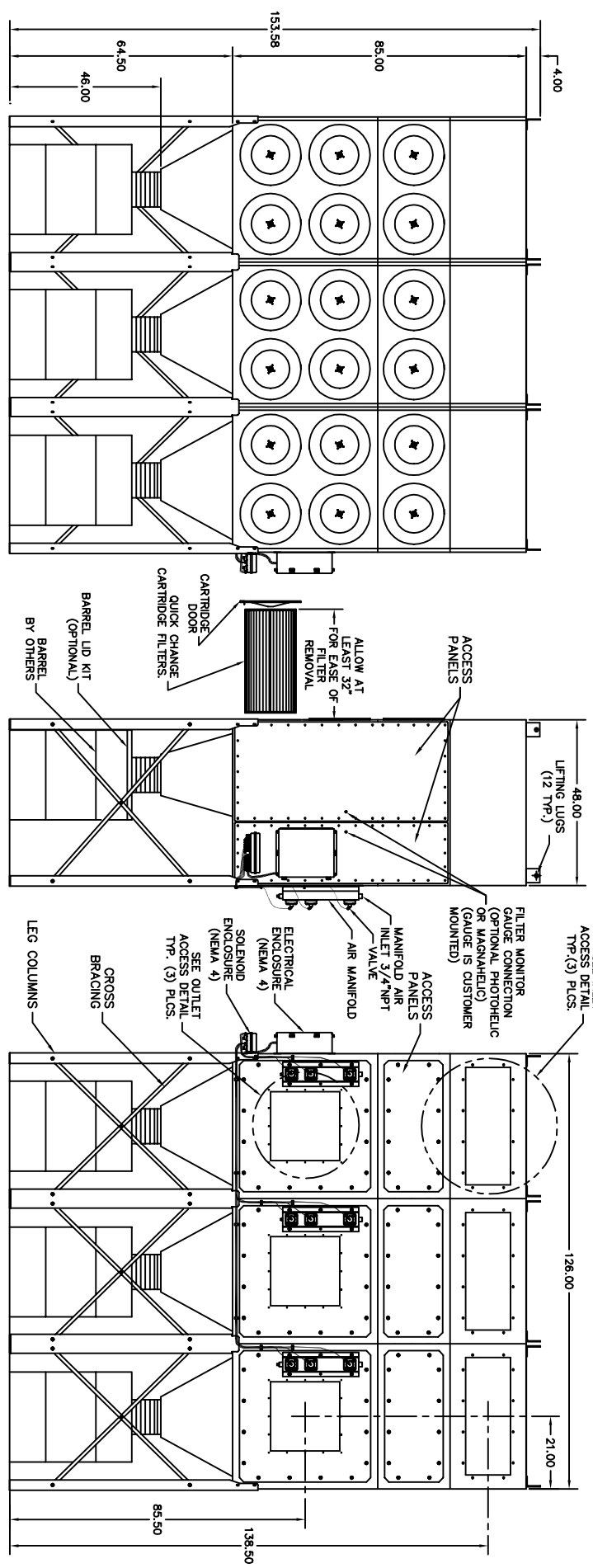
**TITLE**  
RP6-2 BOLT TOGETHER DETAIL

**TOLERANCES UNLESS OTHERWISE NOTED**  
3 DEC. PLACES 1/16" DIMS  
SCALE 1/32"=1"

**DATE** 12-17-97  
**CHKD BY** JG  
**DATE** 11  
**SH. 1 OF 4**

**DWG. NO.** 1563  
**REV.** 2

**METAL FAB**  
NEW ORLEANS, LA 70118  
NEW VENTURA, CA 97728

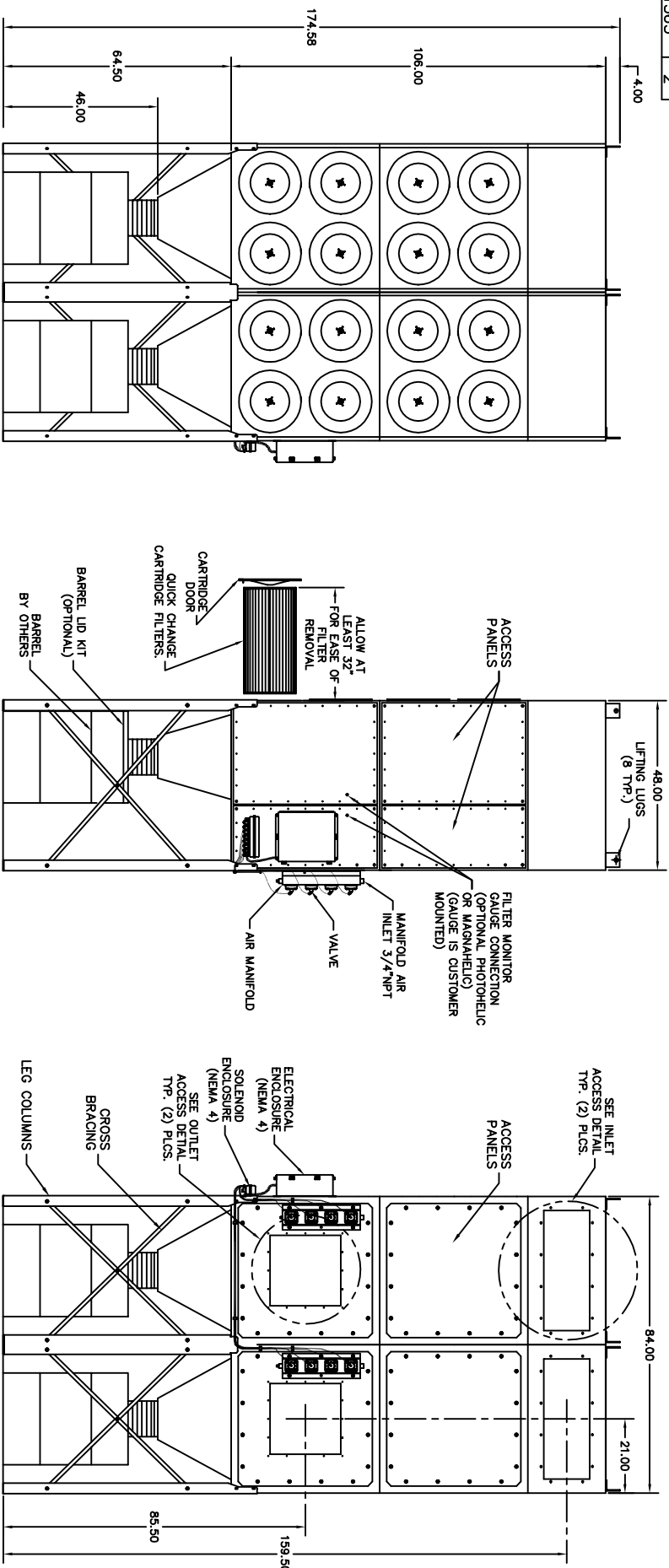


- NOTES
- 1.) UNITS MUST BE ATTACHED TO IN-PLANT COMPRESSED AIR SUPPLY FOR CLEANING MECHANISM TO FUNCTION (90 MAX PSIG CLEAN DRY AIR)
  - 2.) VALVES AND CONTROL TIMER SYSTEM OPERATE ON 120V, 50-Hz. POWER.
  - 3.) WELDED STEEL CONSTRUCTION OF 12 GA. MILD STEEL.
  - 4.) SOLID STATE PULSE CONTROL TIMER IN NEMA 4 ENCLOSURE
  - 5.) PAINTED INSIDE & OUT CRIMSON RED.

SPECIFICATIONS  
 TOTAL VALVES 9  
 TOTAL CARTRIDGES 18  
 COMPRESSED AIR 1.0 SCF @90 psi per sec.

TITLE		TOLERANCES UNLESS NOTED	
RP6-3 BOLT TOGETHER DETAIL		3 DEC. PLACES UNLESS NOTED	
DMC NO: 1563	REV: 2	SCALE: 1/3"=1"	DATE: 11/17/97
DMC NO: 1563	REV: 2	DATE: 11/17/97	BY: JLD





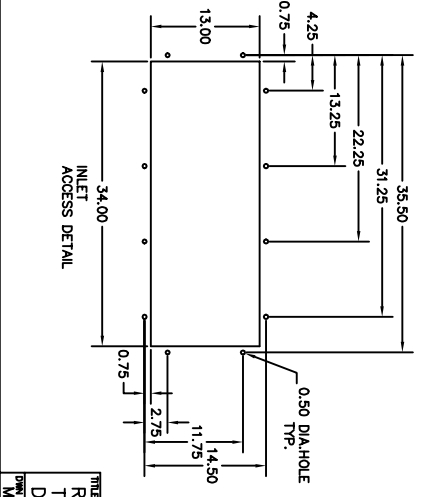
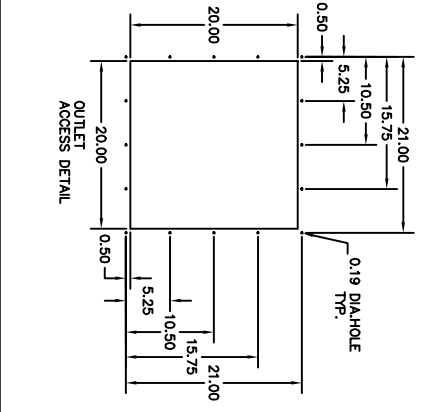
**NOTES**

- 1.) UNITS MUST BE ATTACHED TO IN-PLANT COMPRESSED AIR SUPPLY FOR CLEANING MECHANISM TO FUNCTION (90 MAX PSIG CLEAN DRY AIR)
- 2.) VALVES AND CONTROL TIMER SYSTEM OPERATE ON 120V, 50-Hz. POWER.
- 3.) WELDED STEEL CONSTRUCTION OF 12 GA. MILD STEEL.
- 4.) SOLID STATE PULSE CONTROL TIMER IN NEMA 4 ENCLOSURE
- 5.) PAINTED INSIDE & OUT GRIMSON RED.

**SPECIFICATIONS**

TOTAL CARTRIDGES. 8

COMPRESSED AIR. 1.0 SCF @90 psi per sec. 16



**TITLE**  
RP8-2 BOLT TIGHTENER DETAIL

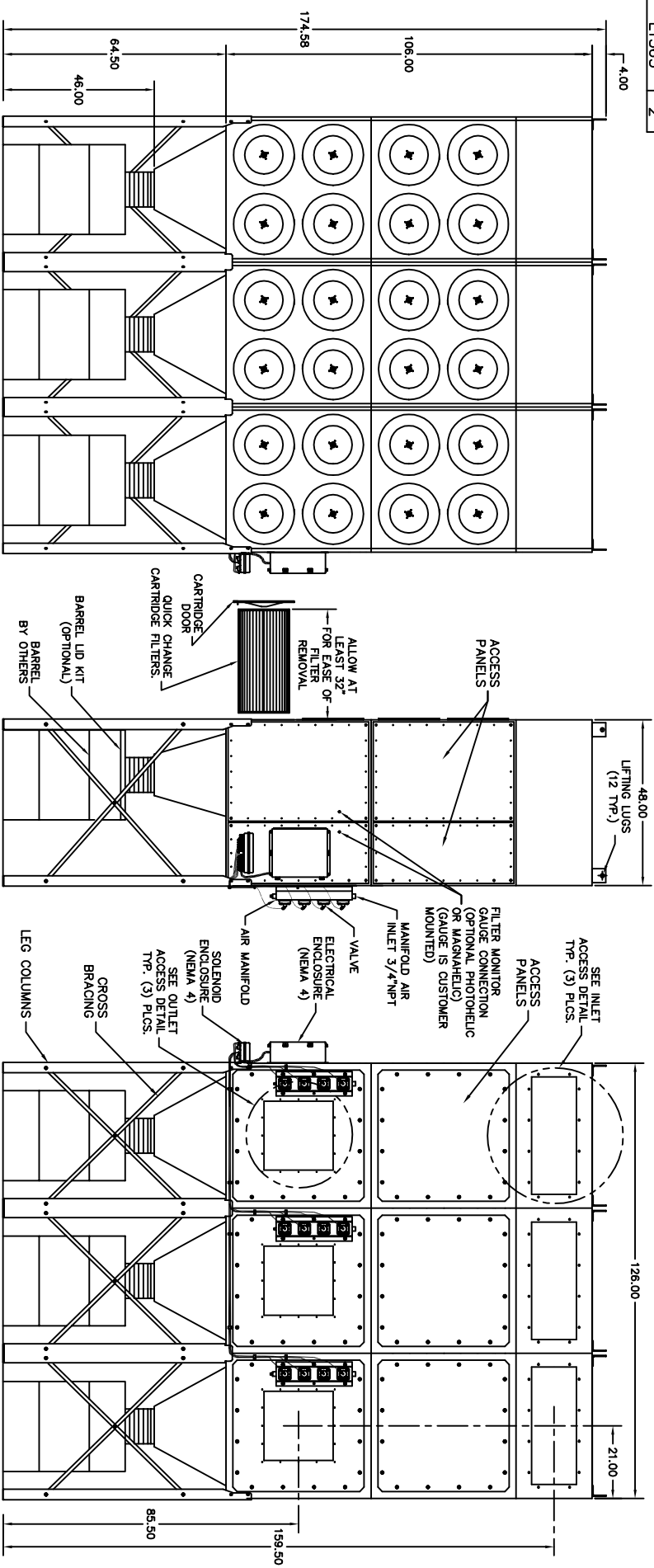
**DMC NO.** 1563  
**REV.** 2

**DATE** 12-17-97  
**BY** J.D.  
**CHKD BY** DMC  
**NO.** 11

**TOLERANCES UNLESS NOTED OTHERWISE**  
3 DEC. PLACES 1/16" - 1/8" 1/32"  
SCALE 1:3 = 10'

**DMC INC.**  
METAL FAB  
NEW GARDNER, PA 17058  
NEW VENTURA, MS 37281

**NO.** 2



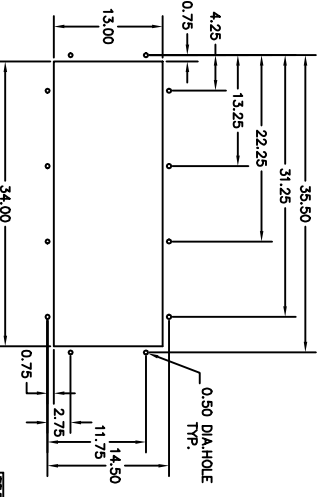
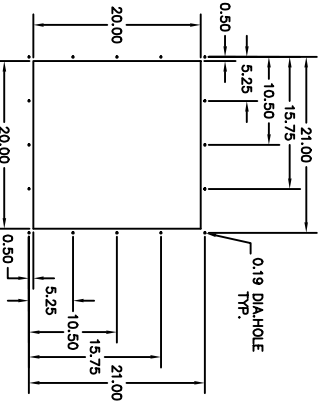
- NOTES
- 1.) UNITS MUST BE ATTACHED TO IN-PLANT COMPRESSED AIR SUPPLY FOR CLEANING MECHANISM TO FUNCTION (90 MAX PSIG CLEAN DRY AIR)
  - 2.) VALVES AND CONTROL TIMER SYSTEM OPERATE ON 120V, 50-HZ POWER.
  - 3.) WELDED STEEL CONSTRUCTION OF 12 GA. MILD STEEL.
  - 4.) SOLID STATE PULSE CONTROL TIMER IN NEMA 4 ENCLOSURE.
  - 5.) PAINTED INSIDE & OUT CRIMSON RED.

SPECIFICATIONS

TOTAL VALVES 12

TOTAL CARTRIDGES 24

COMPRESSED AIR 1.0 SCF @90 psi per sec.



TITLE		TOLERANCES UNLESS	
RP8-3 BOLT TOGETHER		3 DEC PLACES	
DETAIL		1/32" MIN	
DMC NO: 1563	REV: 2	SCALE: 1/3"=1"	DATE: 11-97
DRW: M.C.	CHKD: J.D.	DATE: 11-97	SH. 4 OF 4
METAL FAB		TOLSON & ASSOCIATES	
NEW ORLEANS, LA 70112		NEW ORLEANS, LA 70112	