



BREATHE EASY...Solutions for Clean, Safe Air

HYDROMAX® WC2500 / WCDDT4830 Specifications and Technical Data

TYPICAL APPLICATIONS:

- SAFE COLLECTION OF ALUMINUM, TITANIUM AND OTHER COMBUSTIBLE DUSTS
- GRINDING DUST AND PARTICULATE
- EXPLOSIVE DUST COMPOUNDS
- SPARKING / COMBUSTIBLE MATERIALS
- POWDERS & OTHER DRY DUSTS



STANDARD FEATURES:

- UL LISTED ELECTRICAL SYSTEM
- MIST ELIMINATOR FILTERS
- INTERNAL Baffle SECTION
- SUMP WITH SLOPED FRONT FOR EASY CLEAN-OUT
- ALL STAINLESS STEEL CONSTRUCTION WITH MARINE GRADE BLACK EPOXY FINISH
- NEMA 4 CONTROL PANEL WITH VISUAL HEADS-UP DISPLAY AND INTEGRAL MOTOR CONTROLS INCLUDING PANEL MOUNTED START/STOP PUSHBUTTONS

STANDARD FEATURES:

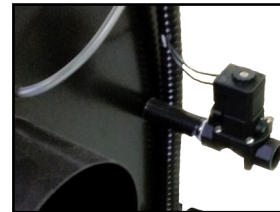
- EQUIPMENT INTERLOCK - HYDROMAX® IS STANDARD WITH A LOW LEVEL SHUT-OFF RELAY AND MOTOR RUN RELAY TO INTERLOCK WITH DUST PRODUCING EQUIPMENT
- SUMP OVERFLOW VISUAL ALARM THAT SHUTS UNIT DOWN

OPTIONS:

- POWERED SUMP VENT BLOWER
- WCDDT4830 DOWNDRAFT TABLE
- HEPA AFTERFILTER
- EXHAUST SILENCER
- MERV 16 A-FRAME AFTER FILTER

HOW IT WORKS:

Dust and particulate enter the HYDROMAX® wet collector through ducting in the rear of the filter cabinet. The contaminated air is mixed into a turbulent water bath, and runs through a series of internal baffles. The engineered baffles, and water streams filter and drop out the combustible dust where it is contained in the bottom of the collector for safe removal, at necessary intervals with the provided sludge rake. Water levels are automatically controlled through our flow valve system that can be interlocked with the dust producing equipment to meet OSHA and NFPA requirements for combustible dusts.



Fill Valve



Control Panel

Standard auto-fill valve and interlocking control panel shown. Features built-in pre-wired controls.

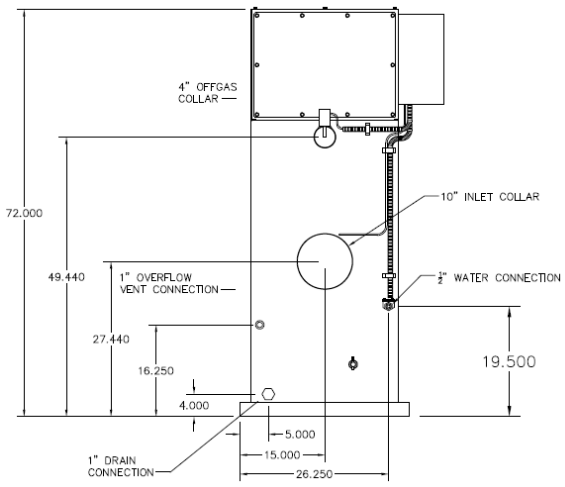
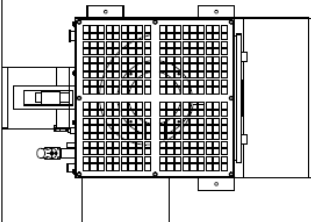
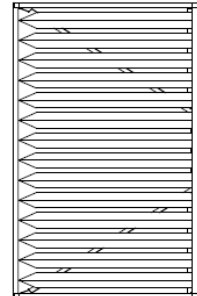
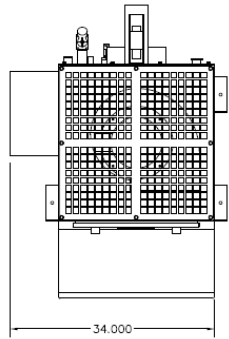


WC2500 / WCDDT4830

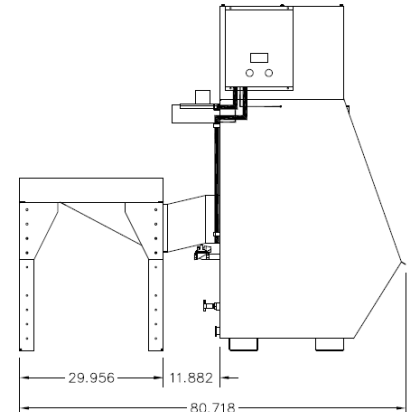
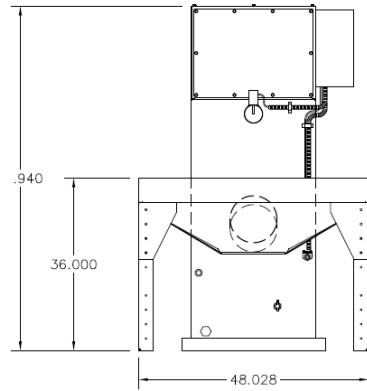
L2639-WC2500 / WCDDT4830-04/22



WC2500/WCDDT4830



WC2500



WC2500 / WCDDT4830

WC2500 SPECIFICATIONS:

OVERALL DIMENSIONS:

- 72.5" H X 34" W X 49" D
- 72.5" H X 48 W X 81" D WITH WCDDT4830 DOWNDRAFT TABLE
- 98.5" H X 36.5" X 49" D WITH A-FRAME AFTERFILTER

WEIGHT:

- *520 LBS ACTUAL WEIGHT
- *570 LBS SHIPPING WEIGHT
- *WEIGHT VARIES DEPENDING UPON OPTIONS SELECTED

CABINET:

HEAVY DUTY 16 GA. WELDED 304 STAINLESS STEEL W/EXTERIOR SURFACES GROUND SMOOTH

FINISH:

MARINE GRADE BLACK POWDER COAT FINISH

FILTER ACCESS:

LIFT OFF FRONT PANEL FOR EASY CLEANOUT OF COLLECTED SLUDGE

MOTOR:

5 HP, TEFC, WASHDOWN MOTOR, 208 / 230 OR 460V, THREE PHASE

BLOWER:

STAINLESS STEEL, BACKWARD INCLINED, DIRECT DRIVE BLOWER

AIR VOLUME:

CONSULT FACTORY

CONTROLS:

FACTORY WIRED AND INSTALLED NEMA 4 CONTROL PANEL, COMPLETE WITH MOTOR STARTER, OVERLOAD PROTECTION, DIGIHELIC FLOW CONTROL AND PUSHBUTTON START / STOP

INLET / EXHAUST:

10" DIAMETER INLET ON BACK OF CABINET, VERTICAL DISCHARGE IN THE TOP OF THE FILTER CABINET

SUMP VENT:

4" DIAMETER ELECTRONICALLY CONTROLLED AND EQUIPPED STANDARD

MAX CURRENT

208—230V / 460V—14.4 / 7.2 AMP

NOISE LEVELS:

- 76 dBA @ 5' - NO SILENCER
- 72 dBA @ 5' WITH SILENCER

WCDDT4830:

48" X 30" DOWNDRAFT TABLE WITH SLOPED INTER-CONNECTING HOPPER—SUPPLIES 240 FPM DOWNDRAFT VELOCITY

WATER USAGE:

1.56 GAL / HR
SPECIFICATIONS SUBJECT TO CHANGE WITHOUT NOTICE