



MODEL TM500

Installation and Operation Manual



Important:

This manual contains specific cautionary statements relative to worker safety. Read this manual thoroughly and follow as directed. It is impossible to list all the hazards of dust control equipment. All persons involved with the equipment or systems should be instructed how to operate in a safe manner.

MODEL TM500 SPECIFICATIONS

INPUT VOLTAGE:

120V 60Hz 1 Phase

MAX. CURRENT:

10 Amps (at 120V, 3/4HP, Single Phase)

MOTOR:

TEFC 3/4 HP, 1 Phase

EXTERNAL ARM:

5 ft. long by 4" diameter steel tube with 350 degree movement and two joints, or 7 ft. long by 6" diameter flex duct with magnetic hood.

DIMENSIONS: 39" h. X 16" w. X 16" l.

ACTUAL WEIGHT:

4" arm: 148 lbs.

6" flex: 138 lbs.

PACKAGE CONTENTS:

1 Ea. TM500

OPTIONS (These items are separately packed):

1 ea. 4" dia. by 5' Arm Assembly

1 ea. 6" dia. by 7' Flex Assembly

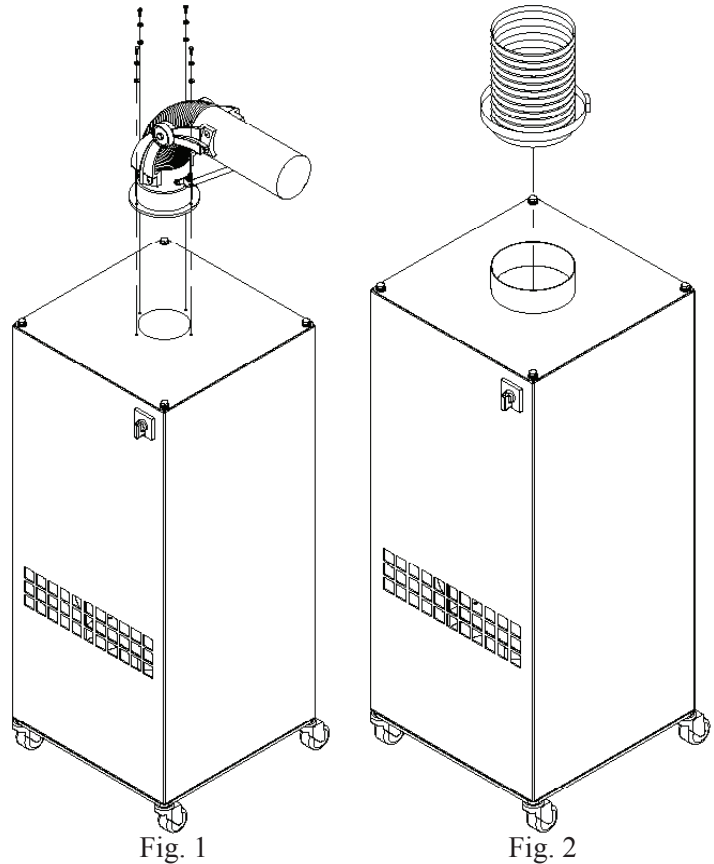
Caution:

⚠ All electrical work must be done by a qualified electrician according to local, state and national codes.

PRE-OPERATING INSTRUCTIONS:

NOTE: The following instructions will vary depending on options received.

1. Remove the shipping crate, shipping straps and plastic wrapping from the unit.
2. Remove the TM500 from the shipping skid and set on a level surface.
3. Remove the attachment option from the shipping carton.
4. If equipped, install the arm assembly onto the base unit (Fig. 1).
5. If equipped, install the flex assembly onto the base unit (Fig. 2).



OPERATING INSTRUCTIONS:

1. Choose a suitable, level place near the workstation and position the unit so that the hose/arm assembly will be placed near the source of pollution being generated.
2. Grasp the hood by the handle ring and position within 18" of the source of pollution.
3. Plug the power cord into a outlet of the appropriate voltage and phase
4. Turn the power switch on.
5. Adjust the hood to capture the maximum amount of contaminants. Periodically adjust the position of the hood to keep it in maximum capture range.

CHANGING FILTERS:

Caution:

⚠ Always make sure that the unit is turned off and power disconnected before changing filters or servicing the unit.

1. Turn the TM500 off and remove the filter access panel.
2. Remove the filter.
3. Slide new filter into the cabinet.
4. Replace the filter access panel (Fig. 3).

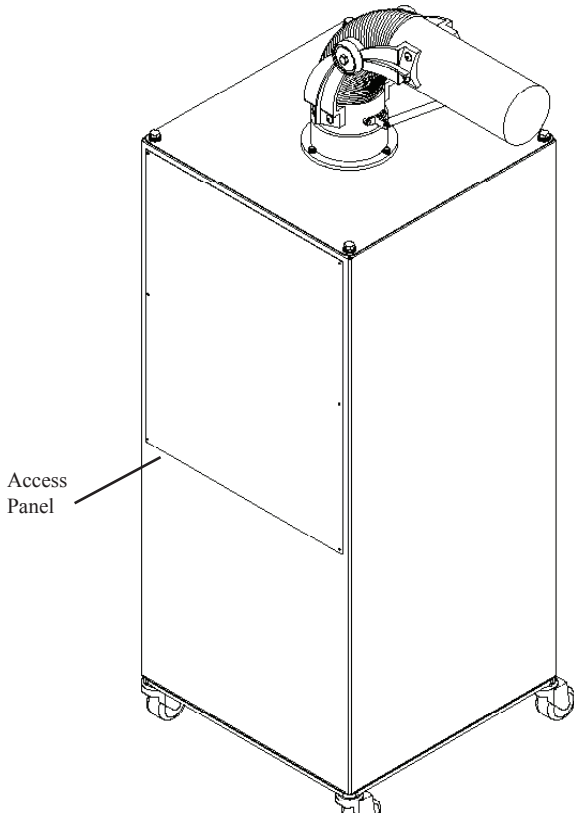


Fig. 3

GENERAL MAINTENANCE:

1. Check the wiring for loose connections or cracked insulation.
2. No lubrication is required for the motor because it is a permanent pre-lube design.
3. Once per month grease the suction arm base assembly with a bearing grease listed to not react with aluminum.

TM500 WIRING DIAGRAM

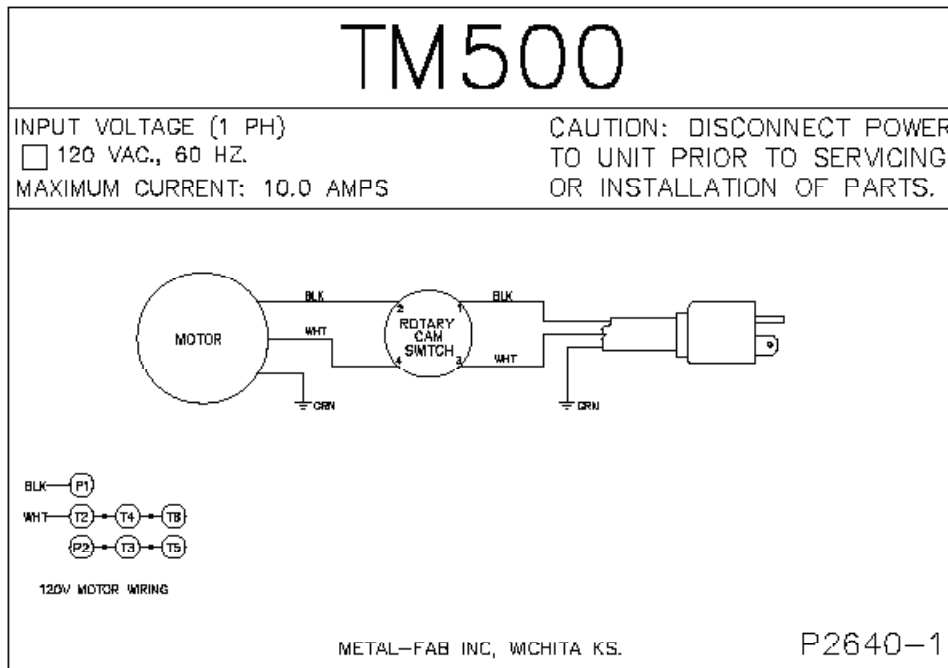


Fig. 4

4" DIAMETER ARM ASSEMBLY PARTS LIST

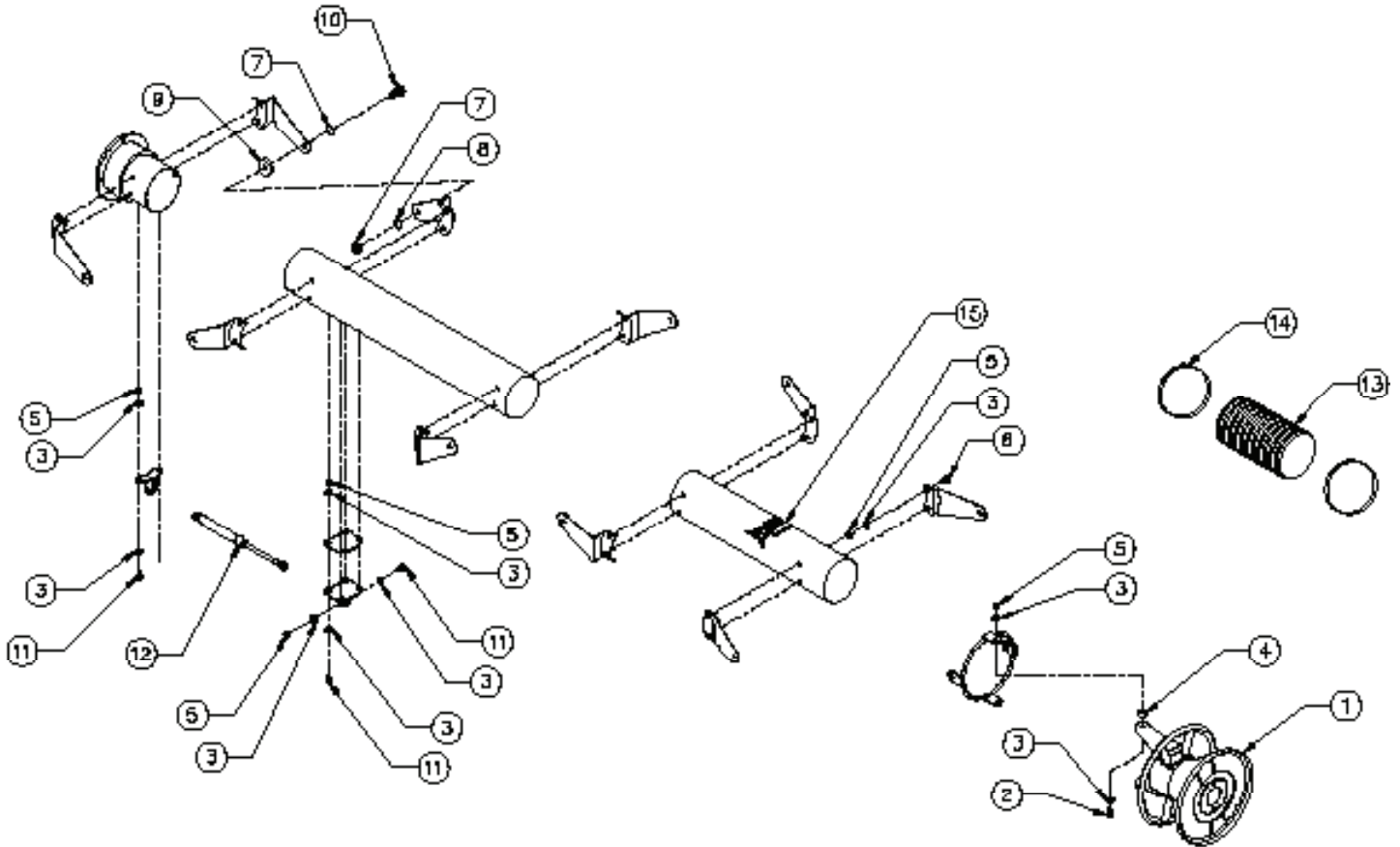


Fig. 5

ITEM	PART NO.	DESCRIPTION
1.	P2463	4" Hood Assembly
2.	P2483	1/4-20 x 1" Hex Head Bolt
3.	P246	1/4 Flat Washer
4.	P2482	Hood Disc Pad
5.	P2485	1/4-20 Nylock Hex Nut
6.	P2490	1/4-20 x 1" Carriage Bolt
7.	P2484	5/16" Nylock Hex Nut
8.	P2465	Cup Washer

ITEM	PART NO.	DESCRIPTION
9.	P2464	Friction Pad
10.	P2614	5/16-18 x 1" Hex Head Bolt
11.	P164	1/4-20 x 3/4" Hex Head Bolt
12.	P2460	4" Gas Shock
13.	P2470	4" Dia. Flex Hose
14.	P2232	Hose Clamp
15.	P2312	Micro Air Decal

6" DIAMETER ARM ASSEMBLY PARTS LIST

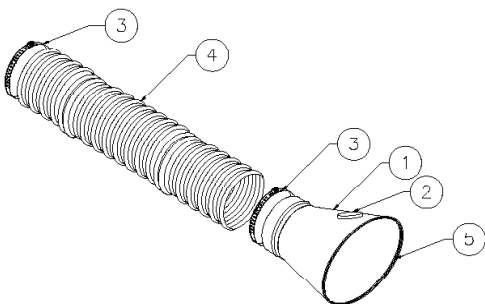


Fig. 6

ITEM	PART NO.	DESCRIPTION
1.	36037-01	Nozzel Assembly
2.	P2303	Magnet
3.	P2232	Hose Clamp
4.	P2646	6" Dia. Flex Hose
5.	P1342	Edge Guard

TM500 PARTS LIST

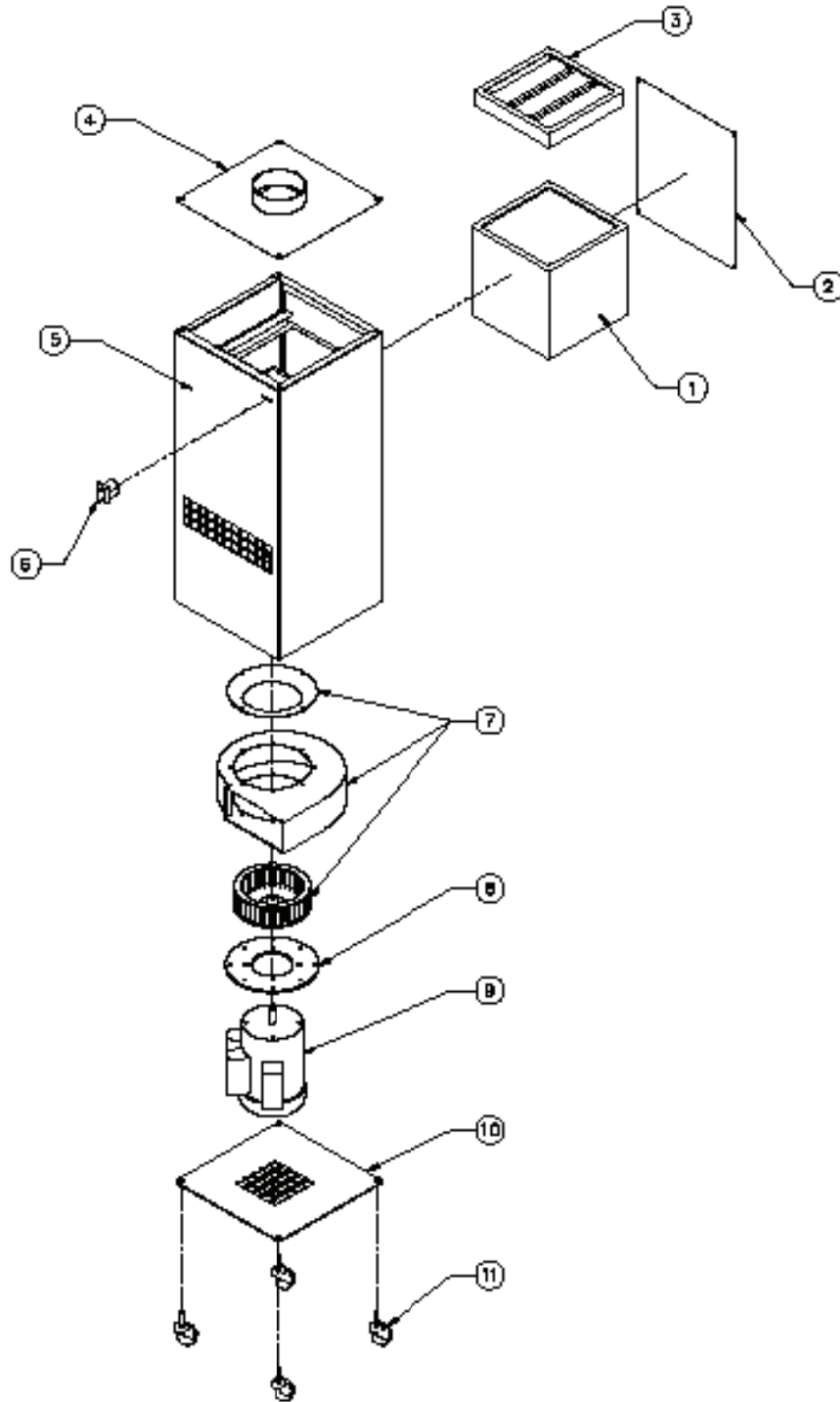


Fig. 7

ITEM	PART NO.	DESCRIPTION	ITEM	PART NO.	DESCRIPTION
1.	P2643	95% DOP Filter	7.	P3028	Blower Assembly
	P2644	99.97% Hepa Filter	8.	38907-01	Motor Mounting Plate
2.	38908-01	Access Panel	9.	P3019	3/4 HP Motor
3.	P2645	Baffle Filter	10.	38909-01	Bottom Plate
4.	38910-01	4" Arm Plate	11.	P2642	Caster
	38910-02	6" Flex Plate	N/S	38914-01	4" Arm Assembly
5.	38901-01	Cabinet Weldment	N/S	38913-01	6" Flex Hood Assembly
6.	P7110	On/Off Switch			

Serial Number:

Supply Voltage:

Date Installed:

Installed By:

Notes: