

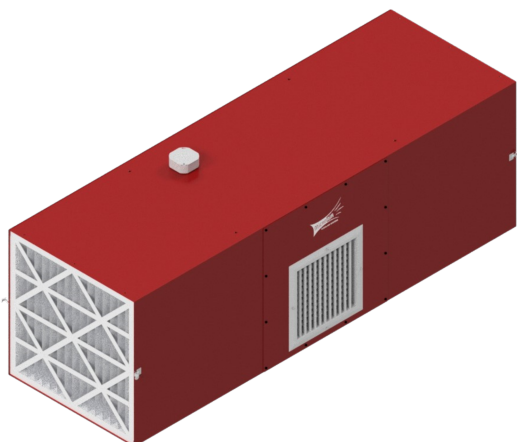
# Ambient T-Style Air Cleaner MXT3500

## Specifications and Technical Data

### TYPICAL APPLICATIONS:

Ambient Capture of Process Dusts / Mists  
Generated in Manufacturing processes:

- Welding Smoke & Fumes
- Grinding / Sanding / Polishing
- Metalworking / Composites
- Coolant / Oil Mist & Smoke
- Other Nuisance Dusts Generated in Industrial Processes



### STANDARD FEATURES:

- T-SHAPED DESIGN—  
DUAL INLET EACH END  
WITH SINGLE CENTER  
EXHAUST
- 4" PLEATED PRE-FILTER
- DIRECT DRIVE BLOWER
- ADJUSTABLE 4-WAY  
EXHAUST GRILLE
- QUIET OPERATION  
67dBA AT 6'
- NO DUCTING REQUIRED
- UP TO 3,650 CFM

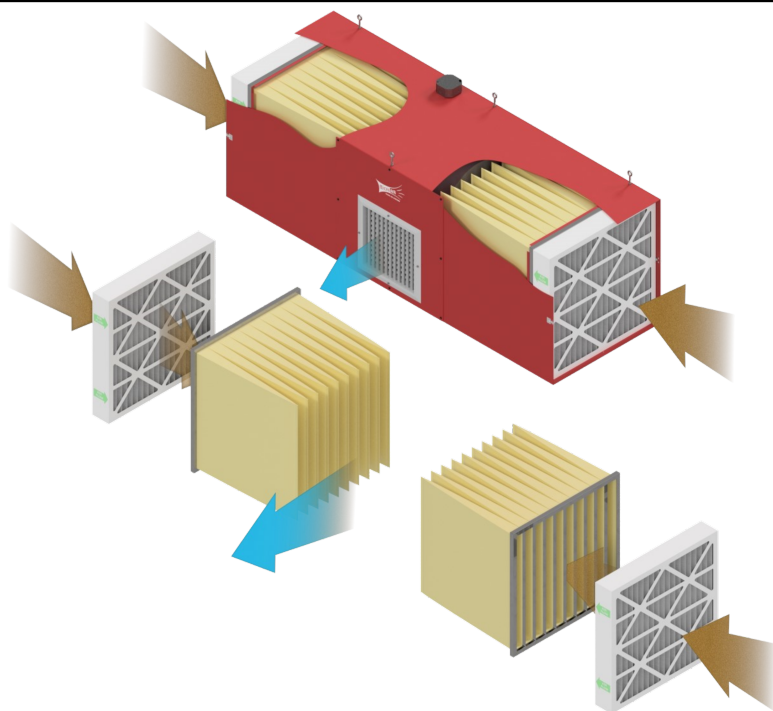
### OPTIONS:

- 0-5" MAGNEHELIC  
GAUGE
- MERV 8 SCRIM PRE-  
FILTER ADDITIONAL  
"FILTER-SAVER" OPTION
- SILENCER
- MULTIPLE MOUNTING  
OPTIONS AVAILABLE
  - 1) EYEBOLTS
  - 2) C-CHANNEL
  - 3) WALL MOUNT
  - 4) FLOOR STAND

### HOW IT WORKS:

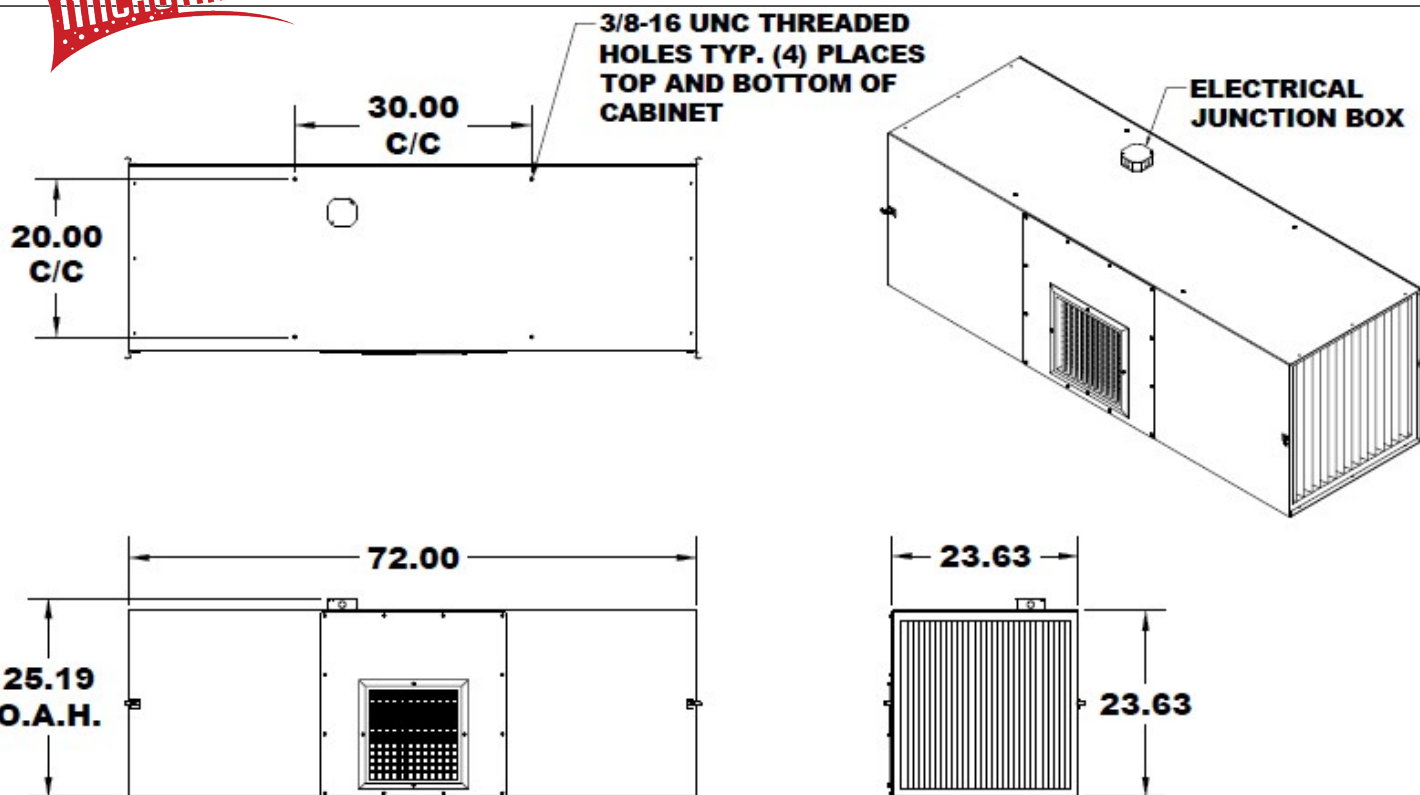
Contaminated air is drawn in from each end of the collector, and passes through the pleated pre-filters, effectively removing the larger particulate from the airstream.

Next the air passes through the primary filtration system, 8 pocket bag filters, where the smaller-particles of airborne impurities are captured. Clean, pollution-free air is then discharged out the center exhaust grille providing a *Breathe Easy*, safe, work environment.





# MXT3500



## MXT3500 SPECIFICATIONS:

### OVERALL DIMENSIONS:

24" D X 24" W X 72" L  
48.39" D X 24" W X 72" L WITH SILENCER

### WEIGHT:

\*160 LBS ACTUAL WEIGHT  
\*200 LBS SHIPPING WEIGHT  
\*WEIGHT VARIES DEPENDING UPON  
OPTIONS SELECTED

### CABINET:

HEAVY DUTY 17 GA. WELDED GALVANEAL STEEL  
W/EXTERIOR SURFACES GROUND SMOOTH

### FINISH:

INDUSTRIAL GRADE TEXTURED BAKED  
CRIMSON RED ENAMEL PAINT—INSIDE AND OUT

### FILTRATION OPTIONS:

TWO EA. MERV 15, 24" X 24" X 22" 95% BAG FILTERS  
TWO EA. MERV 10, 24" X 24" X 22" 55% BAG FILTERS

### PREFILTER

TWO EA. 24" X 24" X 4" PLEATED PREFILTER (STD.)  
TWO EA. MERV 8 SCRIM PRE-FILTER (OPTIONAL)

### FILTER ACCESS:

FRONT LOAD, EACH END FOR EASY ACCESS

SPECIFICATIONS SUBJECT TO CHANGE WITHOUT NOTICE

### NOISE LEVEL:

67dBA AT 6' AWAY FROM UNIT—NO SILENCER  
60 Dba AT 6' AWAY FROM UNIT—WITH SILENCER

### INLET / EXHAUST:

T-STYLE INTAKE AT EACH END / EXHAUST CENTER  
THROUGH 4 WAY ADJUSTABLE GRILLE

### MOTOR:

1 HP, 1075 RPM. SINGLE-SPEED, DIRECT DRIVE

### BLOWER:

10-10 DIRECT DRIVE

### INPUT VOLTAGE:

115 VAC, 60 Hz, 1-PHASE

### MAX CURRENT:

11.8 AMPS

### AIR FLOW:

3650 CFM

### FILTER CHANGE INDICATOR (OPTIONAL):

0-5" MAGNEHELIC GAUGE

### MOUNTING OPTIONS:

EYEBOLT, C-CHANNEL, WALL-MOUNT,  
FLOOR STAND

L3035-0822