



**BREATHE EASY...Solutions for Clean, Safe Air**

## HYDROMAX® WC2500 Specifications and Technical Data



### TYPICAL APPLICATIONS:

- SAFE COLLECTION OF ALUMINUM, TITANIUM AND OTHER COMBUSTIBLE DUSTS
- GRINDING DUST AND PARTICULATE
- EXPLOSIVE DUST COMPOUNDS
- SPARKING / COMBUSTIBLE MATERIALS
- POWDERS & OTHER DRY DUSTS

### STANDARD FEATURES:

- MIST ELIMINATOR FILTERS
- INTERNAL BAFFLE SECTION
- SUMP WITH SLOPED FRONT FOR EASY CLEAN-OUT
- ALL STAINLESS STEEL CONSTRUCTION
- UL 508A NEMA 4 CONTROL PANEL WITH INTEGRAL MOTOR AND LEVEL-CONTROLS
- SUMP OVERFLOW ALARM THAT SHUTS UNIT DOWN

### STANDARD FEATURES:

- EQUIPMENT INTERLOCK - :HYDROMAX® IS STANDARD WITH A LOW LEVEL SHUT-OFF RELAY AND MOTOR RUN RELAY TO INTERLOCK WITH DUST PRODUCING EQUIPMENT

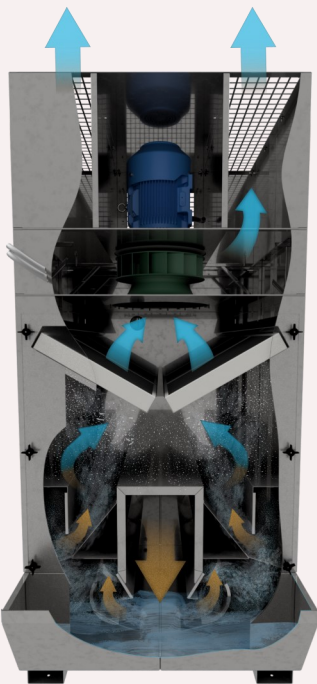
### OPTIONS:

- POWERED SUMP VENT BLOWER
- DOWNDRAFT TABLE APPLICATIONS
- HEPA AFTERFILTER
- EXHAUST SILENCER
- MERV 16 A-FRAME AFTER FILTER
- MARINE GRADE FINISH (BLACK)

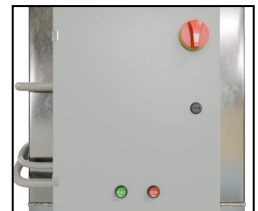
### HOW IT WORKS:

Dust and particulate enter the HYDROMAX® wet collector through ducting in the rear of the filter cabinet. The contaminated air is mixed into a turbulent water bath, and runs through a

series of internal baffles. The engineered baffles, and water streams filter and drop out the combustible dust where it is contained in the bottom of the collector for safe removal, at necessary intervals with the provided sludge rake. Water levels are automatically controlled through our flow valve system that can be interlocked with the dust producing equipment to meet OSHA and NFPA requirements for combustible dusts.

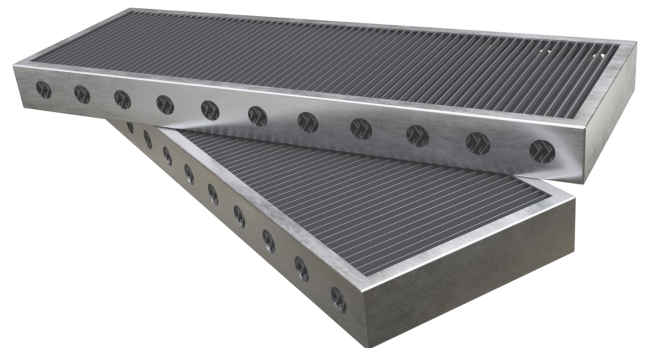


Fill Valve



Control Panel

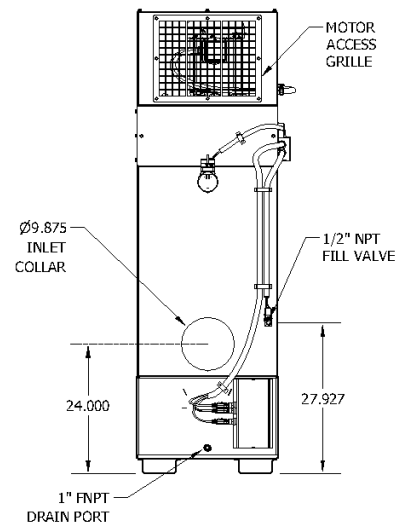
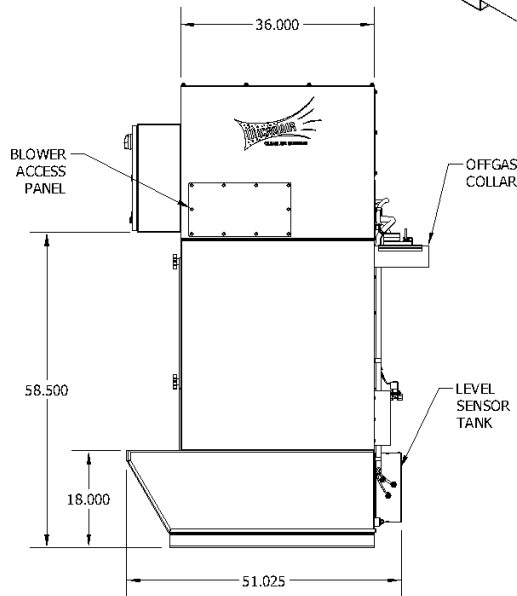
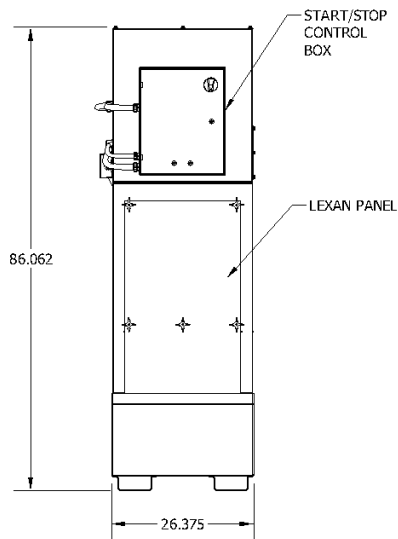
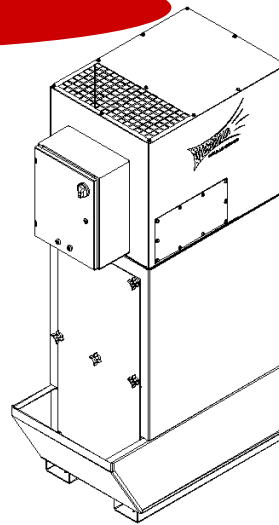
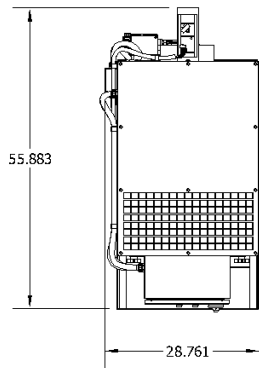
Standard auto-fill valve & interlocking control panel with disconnect



### MIST-X FILTERS

Specially designed chevrons capture any mist and droplets in the air stream keeping the exhausted air dry. Side drain holes help drain captured water back into the sump.

# WC2500



## WC2500 SPECIFICATIONS:

### OVERALL DIMENSIONS:

86" H X 26" W X 56" D  
 112.5" H X 48" W X 56" D WITH A-FRAME AFTERFILTER  
 135.5" H X 36.5" W X 56" D WITH DUAL A-FRAME AFTERFILTER

### WEIGHT:

\*665 LBS ACTUAL WEIGHT  
 \*790 LBS SHIPPING WEIGHT  
 \*WEIGHT VARIES DEPENDING UPON OPTIONS SELECTED

### CABINET:

HEAVY DUTY 16 GA. WELDED 304 STAINLESS STEEL W/EXTERIOR SURFACES GROUND SMOOTH

### FINISH:

OPTIONAL MARINE GRADE BLACK POWDER COAT FINISH

### FILTER ACCESS:

BOLT ON FRONT PANEL FOR EASY CLEANOUT OF COLLECTED SLUDGE

### MOTOR:

7.5 HP, TEFC, MOTOR, 230 OR 460V, THREE PHASE, 3600 RPM

### BLOWER:

ALUMINUM, NONSPARKING, ACF, DIRECT DRIVE BLOWER

### AIR VOLUME:

2500 CFM @ 4.0 INWC EXTERNAL STATIC PRESSURE

### CONTROLS:

FACTORY WIRED AND INSTALLED NEMA 4 CONTROL PANEL, COMPLETE WITH MOTOR STARTER, OVERLOAD PROTECTION, CAPACITANCE FLOW CONTROL NON-FUSED ROTARY DISCONNECT SWITCH AND PUSH BUTTON START / STOP

### INLET / EXHAUST:

REAR 10" INLET COLLAR  
 VERTICAL DISCHARGE IN THE TOP OF FILTER CABINET

### SUMP VENT:

4" DIAMETER ELECTRONICALLY CONTROLLED AND EQUIPPED STANDARD

### MAX CURRENT

230V / 460V—18.4 / 9.2 AMP

### NOISE LEVELS:

85 dBA @ 5' - NO SILENCER

### WATER USAGE:

1.22 GAL / HR

SPECIFICATIONS SUBJECT TO CHANGE WITHOUT NOTICE